



## Rhode Island Department of Labor and Training

# *Weekly Update of Claims Activity*

*Week Ending: September 12, 2015*

### *Unemployment Insurance*

**Initial Claims** – 900 initial claims were processed during the week ending 9/12/15, a decrease of 13 from the previous week, and a decrease of 152 from a year ago. The number of initial claims filed to date is down 10.2 percent from last year and down 16.4 percent from two years ago.

**Continued Claims** – 7,165 continued claims were processed during the week of 9/12/15, a decrease of 1,990 from the previous week and a decrease of 1,162 from a year ago. The number of continued claims filed to date is down 12.7 percent from last year and down 17.9 percent from two years ago.

**Workshare** – gives employers an alternative to layoffs by allowing employees to work reduced hours and collect a percentage of regular UI benefits to compensate for lost pay. This week, 53 initial claims and 133 continued claims were processed. An estimated 15 layoffs were prevented this week, as a result of Workshare.

**Exhaustions** – 191 individuals exhausted their regular payments this week, an increase of 13 from the previous week and a decrease of 36 from a year ago.

### *Temporary Disability Insurance*

**Temporary Disability Insurance** – 872 initial claims and 6,555 continued claims were processed for Temporary Disability Insurance. The average weekly TDI payment is \$467 per week. Rhode Island is currently paying an average of 10.4 weeks per new claim. To date there have been 33,575 TDI initial claims filed.

**Temporary Caregiver Insurance** – Of the 872 TDI initial claims, 182 (20.9%) were TCI Claims. This week 350 TCI payments were issued totaling \$181,098. The average weekly TCI payment was \$517. Of the 33,575 TDI claims filed in 2015, 5,024 or 15.0% were TCI claims.

	Initial Claims			Continued Claims	TOTAL - Initial and Continued Claims			
	Total	New	Additional		Current Week	Previous Week	Year Ago	Two Years Ago
<b>Total - All programs*</b>	983	615	368	7,688	8,671	10,741	10,309	12,277
<b>UI Claims</b>	900	544	356	7,165	8,065	10,068	9,379	10,891
Change from:								
Previous Week	-13	-56	43	-1,990	-2,003			
Year Ago	-152	-128	-24	-1,162	-1,314			
Two Years Ago	-211	-149	-62	-2,615	-2,826			
<b>Interstate-Liable</b>	30	20	10	390	420	438	477	636
<b>Workshare</b>	53	51	2	133	186	235	453	750
<b>Workshare Equivalency</b>	15	15	0	36	51	65	122	173
<b>UI Exhaustions</b>	-	-	-	191	191	178	227	277
<b>TDI Claims (Includes TCI)</b>	872	680	192	6,555	7,427	9,083	8,978	8,485
Change from:								
Previous Week	-30	-19	-11	-1,626	-1,656			
Year Ago	-144	-89	-55	-1,407	-1,551			

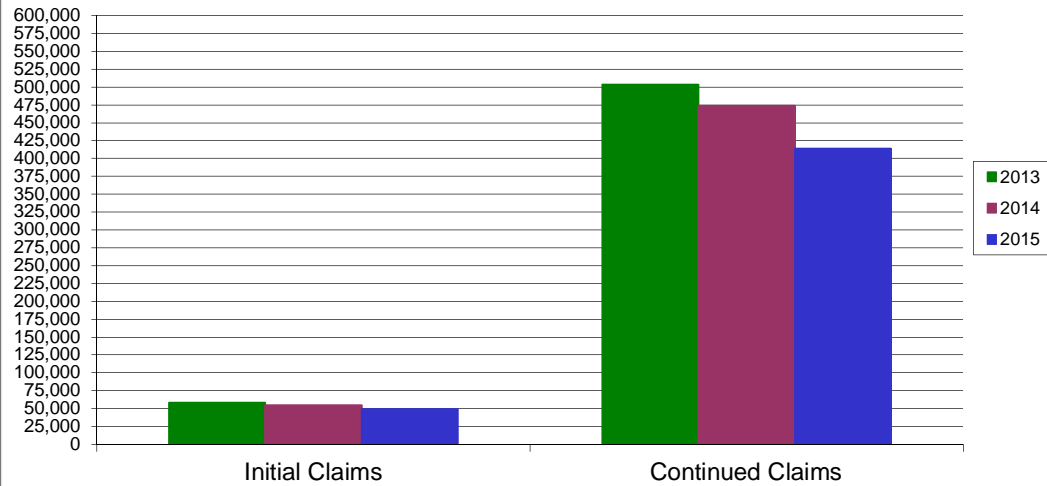
\* Includes UI, Workshare & Interstate Liable.

Equal Opportunity Employer / Program / Auxiliary aids and services available upon request to individuals with disabilities / TTY via RI Relay 711.

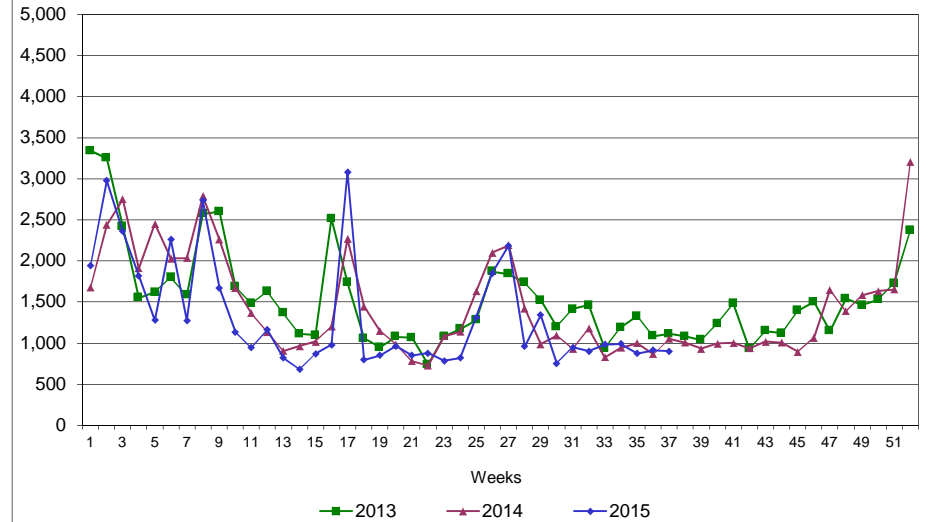
# Rhode Island Department of Labor and Training

## September 12, 2015

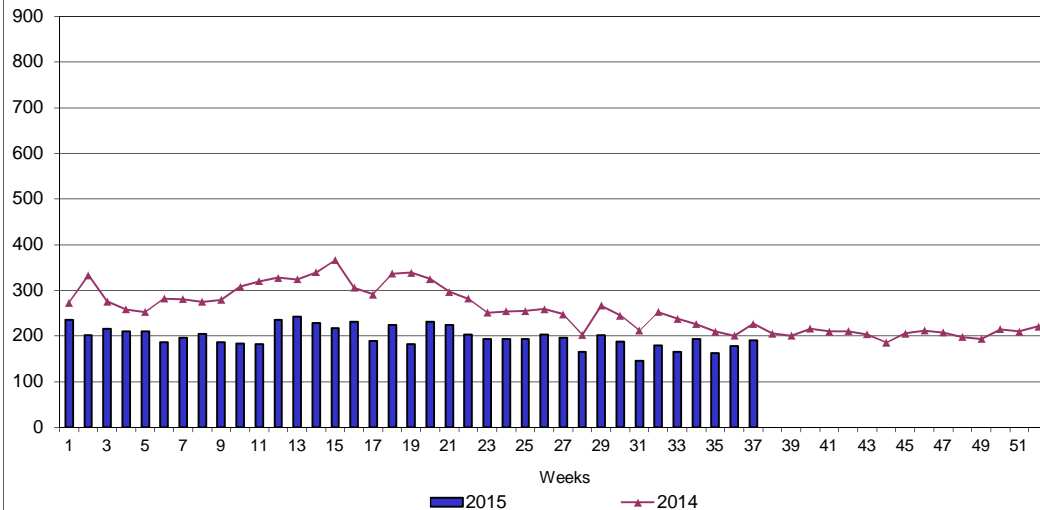
### UI Claims Comparison Year to Date



### UI Initial Claims 2013 - 2015



### UI Exhaustions 2014 - 2015



### TDI Claims Comparison Year to Date

