



## Rhode Island Department of Labor and Training

# *Weekly Update of Claims Activity*

*Week Ending: September 19, 2015*

### *Unemployment Insurance*

**Initial Claims** – 769 initial claims were processed during the week ending 9/19/15, a decrease of 131 from the previous week, and a decrease of 239 from a year ago. The number of initial claims filed to date is down 10.4 percent from last year and down 16.7 percent from two years ago.

**Continued Claims** – 6,929 continued claims were processed during the week of 9/19/15, a decrease of 236 from the previous week and a decrease of 1,144 from a year ago. The number of continued claims filed to date is down 12.7 percent from last year and down 18.0 percent from two years ago.

**Workshare** – gives employers an alternative to layoffs by allowing employees to work reduced hours and collect a percentage of regular UI benefits to compensate for lost pay. This week, 66 initial claims and 145 continued claims were processed. An estimated 15 layoffs were prevented this week, as a result of Workshare.

**Exhaustions** – 156 individuals exhausted their regular payments this week, a decrease of 35 from the previous week and a decrease of 50 from a year ago.

### *Temporary Disability Insurance*

**Temporary Disability Insurance** – 948 initial claims and 8,205 continued claims were processed for Temporary Disability Insurance. The average weekly TDI payment is \$458 per week. Rhode Island is currently paying an average of 10.5 weeks per new claim. To date there have been 34,523 TDI initial claims filed.

**Temporary Caregiver Insurance** – Of the 948 TDI initial claims, 175 (18.5%) were TCI Claims. This week 427 TCI payments were issued totaling \$233,896. The average weekly TCI payment was \$548. Of the 34,523 TDI claims filed in 2015, 5,199 or 15.1% were TCI claims.

	Initial Claims			Continued Claims	TOTAL - Initial and Continued Claims			
	Total	New	Additional		Current Week	Previous Week	Year Ago	Two Years Ago
<b>Total - All programs*</b>	860	594	266	7,471	8,331	8,671	9,840	11,763
<b>UI Claims</b>	769	513	256	6,929	7,698	8,065	9,081	10,522
Change from:								
Previous Week	-131	-31	-100	-236	-367			
Year Ago	-239	-158	-81	-1,144	-1,383			
Two Years Ago	-311	-198	-113	-2,513	-2,824			
<b>Interstate-Liable</b>	25	15	10	397	422	420	488	646
<b>Workshare</b>	66	66	0	145	211	186	271	595
<b>Workshare Equivalency</b>	15	15	0	42	57	51	73	132
<b>UI Exhaustions</b>	-	-	-	156	156	191	206	230
<b>TDI Claims (Includes TCI)</b>	948	741	207	8,205	9,153	7,427	9,097	8,549
Change from:								
Previous Week	76	61	15	1,650	1,726			
Year Ago	-514	-393	-121	570	56			

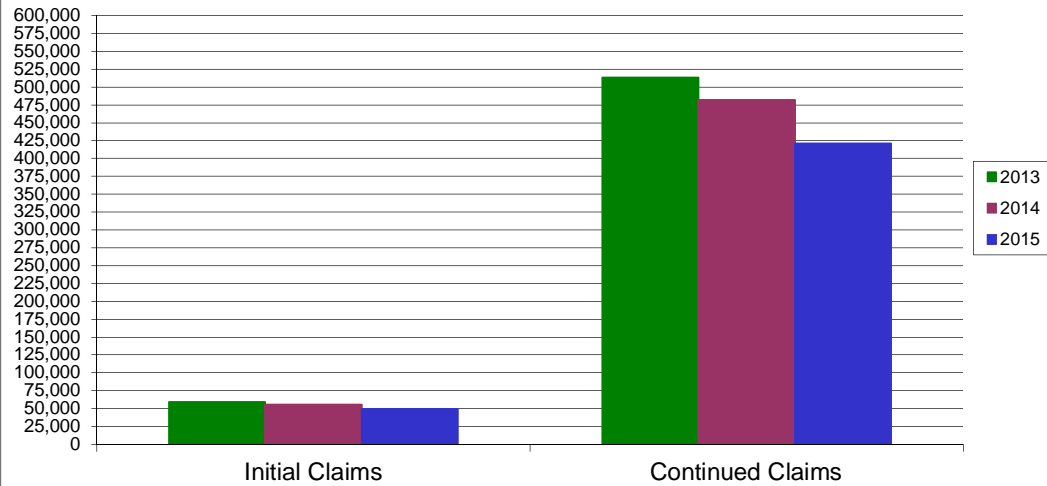
\* Includes UI, Workshare & Interstate Liable.

Equal Opportunity Employer / Program / Auxiliary aids and services available upon request to individuals with disabilities / TTY via RI Relay 711.

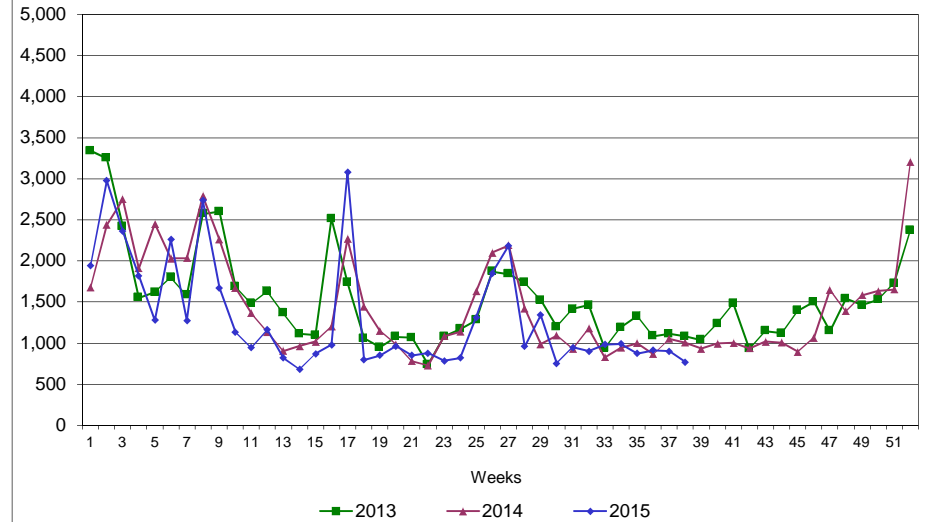
# Rhode Island Department of Labor and Training

## September 19, 2015

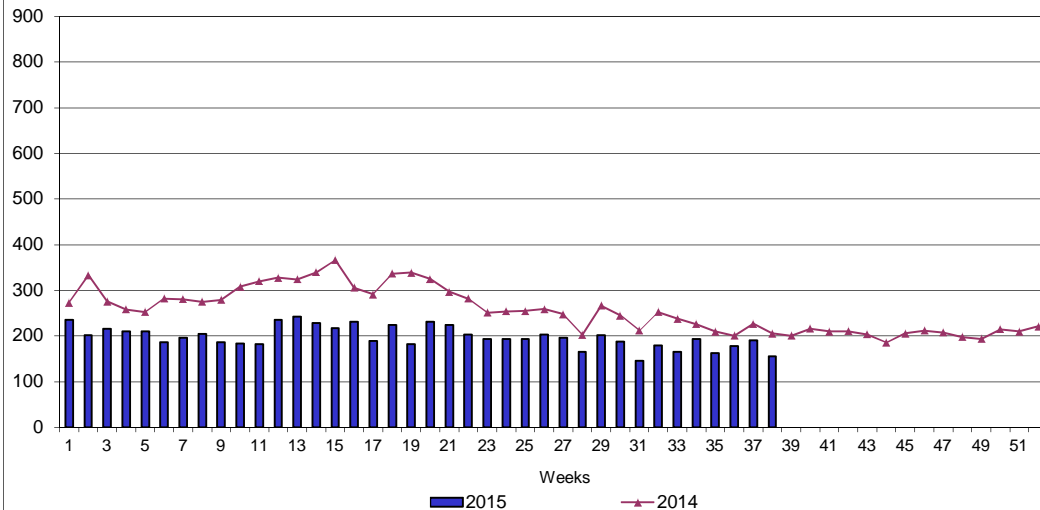
### UI Claims Comparison Year to Date



### UI Initial Claims 2013 - 2015



### UI Exhaustions 2014 - 2015



### TDI Claims Comparison Year to Date

