



Rhode Island Department of Labor and Training

Weekly Update of Claims Activity

Week Ending: September 26, 2015

Unemployment Insurance

Initial Claims – 650 initial claims were processed during the week ending 9/26/15, a decrease of 119 from the previous week, and a decrease of 284 from a year ago. The number of initial claims filed to date is down 10.7 percent from last year and down 17.0 percent from two years ago.

Continued Claims – 6,588 continued claims were processed during the week of 9/26/15, a decrease of 341 from the previous week and a decrease of 1,395 from a year ago. The number of continued claims filed to date is down 12.8 percent from last year and down 18.2 percent from two years ago.

Workshare – gives employers an alternative to layoffs by allowing employees to work reduced hours and collect a percentage of regular UI benefits to compensate for lost pay. This week, 12 initial claims and 190 continued claims were processed. An estimated 3 layoffs were prevented this week, as a result of Workshare.

Exhaustions – 143 individuals exhausted their regular payments this week, a decrease of 13 from the previous week and a decrease of 58 from a year ago.

Temporary Disability Insurance

Temporary Disability Insurance – 854 initial claims and 8,834 continued claims were processed for Temporary Disability Insurance. The average weekly TDI payment is \$468 per week. Rhode Island is currently paying an average of 10.5 weeks per new claim. To date there have been 35,377 TDI initial claims filed.

Temporary Caregiver Insurance – Of the 854 TDI initial claims, 193 (22.6%) were TCI Claims. This week 452 TCI payments were issued totaling \$246,641. The average weekly TCI payment was \$546. Of the 35,377 TDI claims filed in 2015, 5,392 or 15.2% were TCI claims.

	Initial Claims			Continued Claims	TOTAL - Initial and Continued Claims			
	Total	New	Additional		Current Week	Previous Week	Year Ago	Two Years Ago
Total - All programs*	683	440	243	7,172	7,855	8,331	9,763	11,230
UI Claims	650	413	237	6,588	7,238	7,698	8,917	10,160
Change from:								
Previous Week	-119	-100	-19	-341	-460			
Year Ago	-284	-195	-89	-1,395	-1,679			
Two Years Ago	-386	-280	-106	-2,536	-2,922			
Interstate-Liable	21	15	6	394	415	422	498	614
Workshare	12	12	0	190	202	211	348	456
Workshare Equivalency	3	3	0	48	51	57	83	113
UI Exhaustions	-	-	-	143	143	156	201	224
TDI Claims (Includes TCI)	854	676	178	8,834	9,688	9,153	7,978	7,631
Change from:								
Previous Week	-94	-65	-29	629	535			
Year Ago	247	196	51	1,463	1,710			

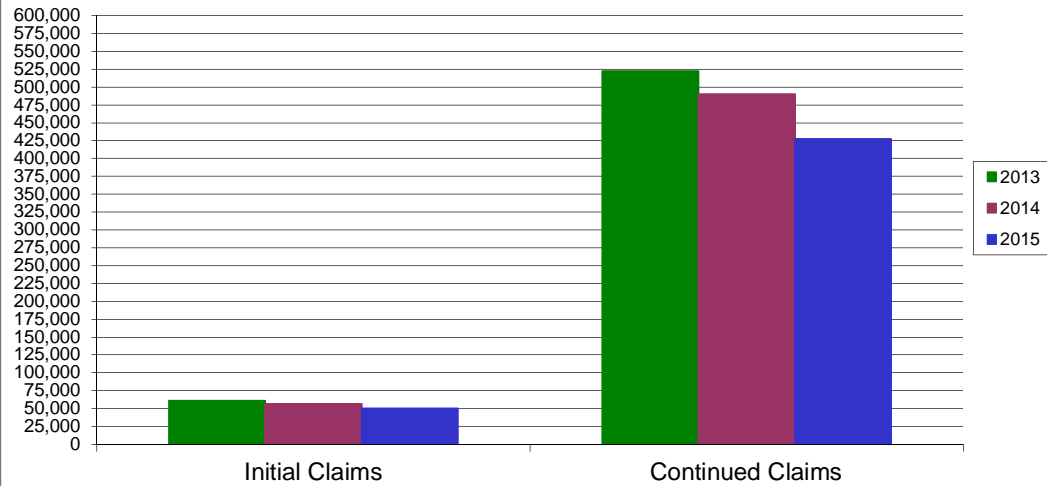
* Includes UI, Workshare & Interstate Liable.

Equal Opportunity Employer / Program / Auxiliary aids and services available upon request to individuals with disabilities / TTY via RI Relay 711.

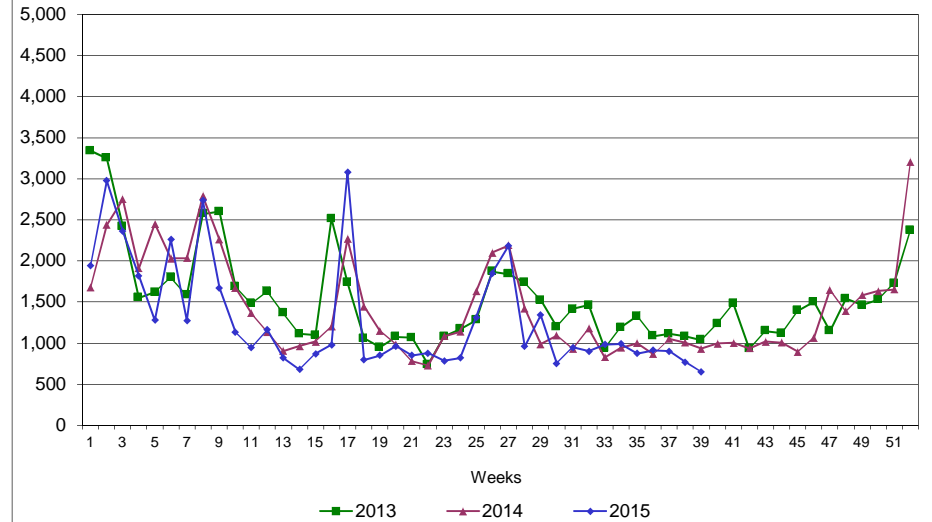
Rhode Island Department of Labor and Training

September 26, 2015

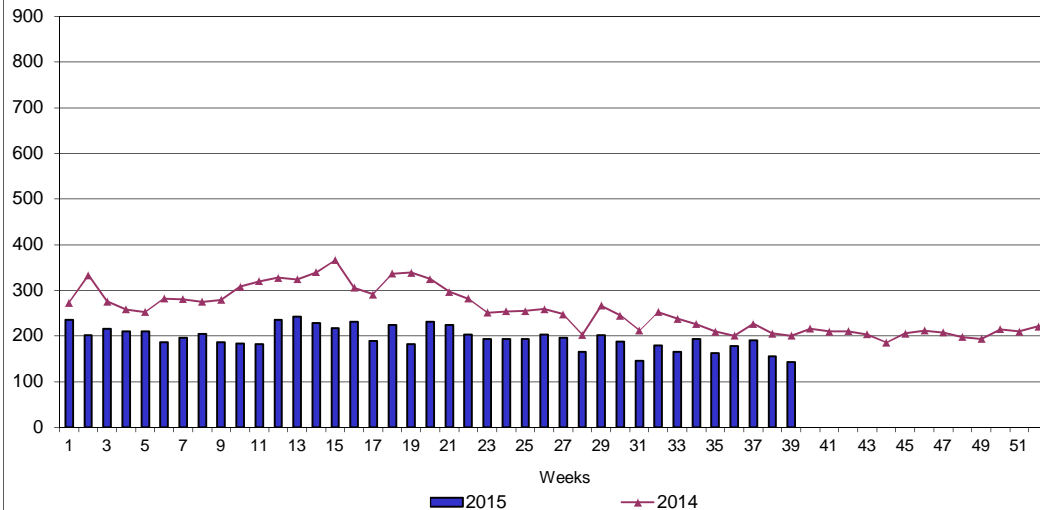
UI Claims Comparison Year to Date



UI Initial Claims 2013 - 2015



UI Exhaustions 2014 - 2015



TDI Claims Comparison Year to Date

