



Rhode Island Department of Labor and Training

Weekly Update of Claims Activity

Week Ending: October 3, 2015

Unemployment Insurance

Initial Claims – 809 initial claims were processed during the week ending 10/3/15, an increase of 159 from the previous week, and a decrease of 185 from a year ago. The number of initial claims filed to date is down 10.9 percent from last year and down 17.4 percent from two years ago.

Continued Claims – 6,561 continued claims were processed during the week of 10/3/15, a decrease of 27 from the previous week and a decrease of 1,392 from a year ago. The number of continued claims filed to date is down 12.8 percent from last year and down 18.3 percent from two years ago.

Workshare – gives employers an alternative to layoffs by allowing employees to work reduced hours and collect a percentage of regular UI benefits to compensate for lost pay. This week, 13 initial claims and 135 continued claims were processed. An estimated 3 layoffs were prevented this week, as a result of Workshare.

Exhaustions – 155 individuals exhausted their regular payments this week, an increase of 12 from the previous week and a decrease of 61 from a year ago.

Temporary Disability Insurance

Temporary Disability Insurance – 1,114 initial claims and 7,649 continued claims were processed for Temporary Disability Insurance. The average weekly TDI payment is \$468 per week. Rhode Island is currently paying an average of 10.5 weeks per new claim. To date there have been 36,491 TDI initial claims filed.

Temporary Caregiver Insurance – Of the 1,114 TDI initial claims, 186 (16.7%) were TCI Claims. This week 374 TCI payments were issued totaling \$203,719. The average weekly TCI payment was \$545. Of the 36,491 TDI claims filed in 2015, 5,578 or 15.3% were TCI claims.

| | Initial Claims | | | Continued Claims | TOTAL - Initial and Continued Claims | | | |
|----------------------------------|----------------|------|------------|------------------|--------------------------------------|---------------|----------|---------------|
| | Total | New | Additional | | Current Week | Previous Week | Year Ago | Two Years Ago |
| Total - All programs* | 841 | 525 | 316 | 7,085 | 7,926 | 7,855 | 9,681 | 11,351 |
| UI Claims | 809 | 503 | 306 | 6,561 | 7,370 | 7,238 | 8,947 | 10,171 |
| Change from: | | | | | | | | |
| Previous Week | 159 | 90 | 69 | -27 | 132 | | | |
| Year Ago | -185 | -118 | -67 | -1,392 | -1,577 | | | |
| Two Years Ago | -427 | -293 | -134 | -2,374 | -2,801 | | | |
| Interstate-Liable | 19 | 11 | 8 | 389 | 408 | 415 | 467 | 622 |
| Workshare | 13 | 11 | 2 | 135 | 148 | 202 | 267 | 558 |
| Workshare Equivalency | 3 | 3 | 0 | 40 | 43 | 51 | 72 | 124 |
| UI Exhaustions | - | - | - | 155 | 155 | 143 | 216 | 233 |
| TDI Claims (Includes TCI) | 1,114 | 847 | 267 | 7,649 | 8,763 | 9,688 | 8,284 | 8,787 |
| Change from: | | | | | | | | |
| Previous Week | 260 | 171 | 89 | -1,185 | -925 | | | |
| Year Ago | 231 | 168 | 63 | 248 | 479 | | | |

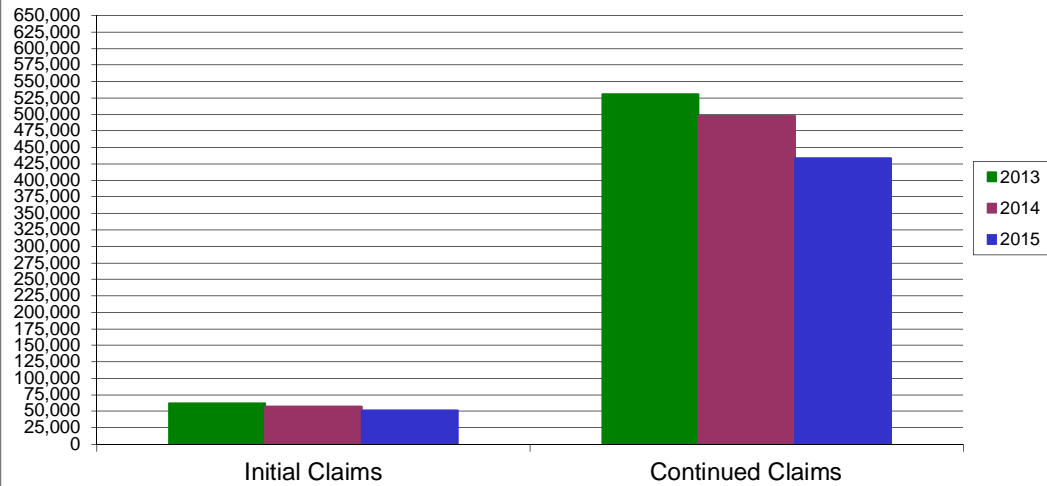
* Includes UI, Workshare & Interstate Liable.

Equal Opportunity Employer / Program / Auxiliary aids and services available upon request to individuals with disabilities / TTY via RI Relay 711.

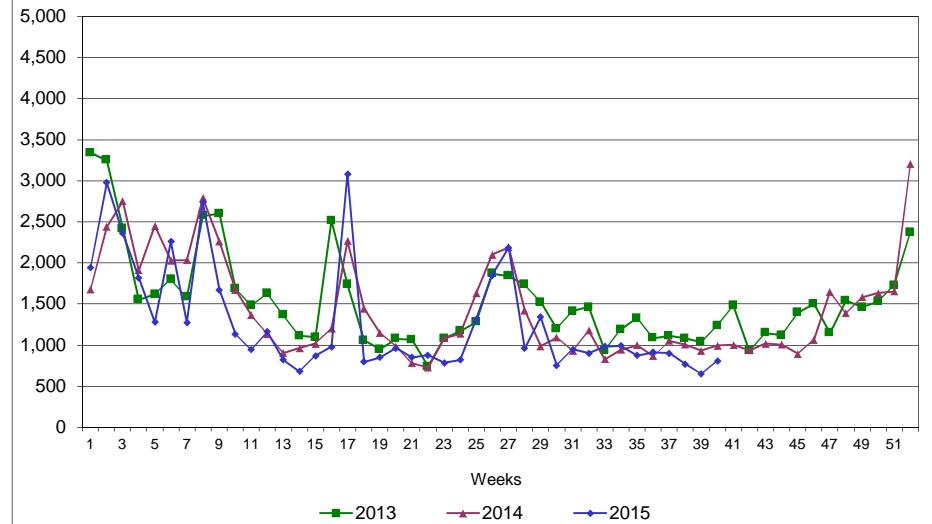
Rhode Island Department of Labor and Training

October 3, 2015

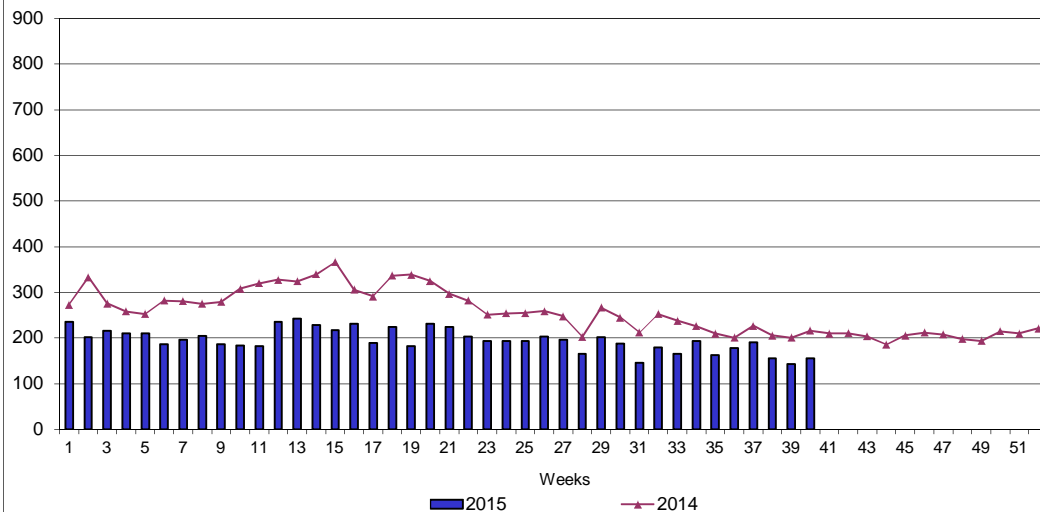
UI Claims Comparison Year to Date



UI Initial Claims 2013 - 2015



UI Exhaustions 2014 - 2015



TDI Claims Comparison Year to Date

