



## Rhode Island Department of Labor and Training

# *Weekly Update of Claims Activity*

*Week Ending: October 10, 2015*

### *Unemployment Insurance*

**Initial Claims** – 991 initial claims were processed during the week ending 10/10/15, an increase of 182 from the previous week, and a decrease of 13 from a year ago. The number of initial claims filed to date is down 10.7 percent from last year and down 17.7 percent from two years ago.

**Continued Claims** – 6,592 continued claims were processed during the week of 10/10/15, an increase of 31 from the previous week and a decrease of 1,399 from a year ago. The number of continued claims filed to date is down 12.9 percent from last year and down 18.5 percent from two years ago.

**Workshare** – gives employers an alternative to layoffs by allowing employees to work reduced hours and collect a percentage of regular UI benefits to compensate for lost pay. This week, 15 initial claims and 177 continued claims were processed. An estimated 3 layoffs were prevented this week, as a result of Workshare.

**Exhaustions** – 160 individuals exhausted their regular payments this week, an increase of 5 from the previous week and a decrease of 50 from a year ago.

### *Temporary Disability Insurance*

**Temporary Disability Insurance** – 1,080 initial claims and 7,850 continued claims were processed for Temporary Disability Insurance. The average weekly TDI payment is \$459 per week. Rhode Island is currently paying an average of 10.4 weeks per new claim. To date there have been 37,571 TDI initial claims filed.

**Temporary Caregiver Insurance** – Of the 1,080 TDI initial claims, 161 (14.9%) were TCI Claims. This week 433 TCI payments were issued totaling \$229,896. The average weekly TCI payment was \$531. Of the 37,571 TDI claims filed in 2015, 5,739 or 15.3% were TCI claims.

	<u>Initial Claims</u>			<u>Continued Claims</u>	<u>TOTAL - Initial and Continued Claims</u>			
	<u>Total</u>	<u>New</u>	<u>Additional</u>		<u>Current Week</u>	<u>Previous Week</u>	<u>Year Ago</u>	<u>Two Years Ago</u>
<b>Total - All programs*</b>	1,040	707	333	7,154	8,194	7,926	9,857	11,615
<b>UI Claims</b>	991	669	322	6,592	7,583	7,370	8,995	10,563
Change from:								
Previous Week	182	166	16	31	213			
Year Ago	-13	9	-22	-1,399	-1,412			
Two Years Ago	-489	-429	-60	-2,491	-2,980			
<b>Interstate-Liable</b>	34	26	8	385	419	408	493	609
<b>Workshare</b>	15	12	3	177	192	148	369	443
<b>Workshare Equivalency</b>	3	2	1	45	48	43	89	107
<b>UI Exhaustions</b>	-	-	-	160	160	155	210	241
<b>TDI Claims (Includes TCI)</b>	1,080	827	253	7,850	8,930	8,763	9,527	7,106
Change from:								
Previous Week	-34	-20	-14	201	167			
Year Ago	102	79	23	-699	-597			

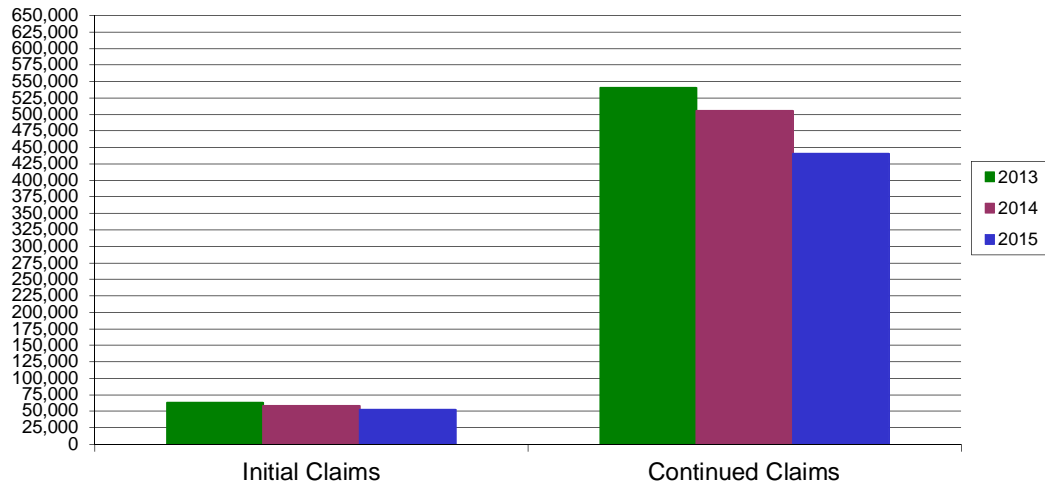
\* Includes UI, Workshare & Interstate Liable.

Equal Opportunity Employer / Program / Auxiliary aids and services available upon request to individuals with disabilities / TTY via RI Relay 711.

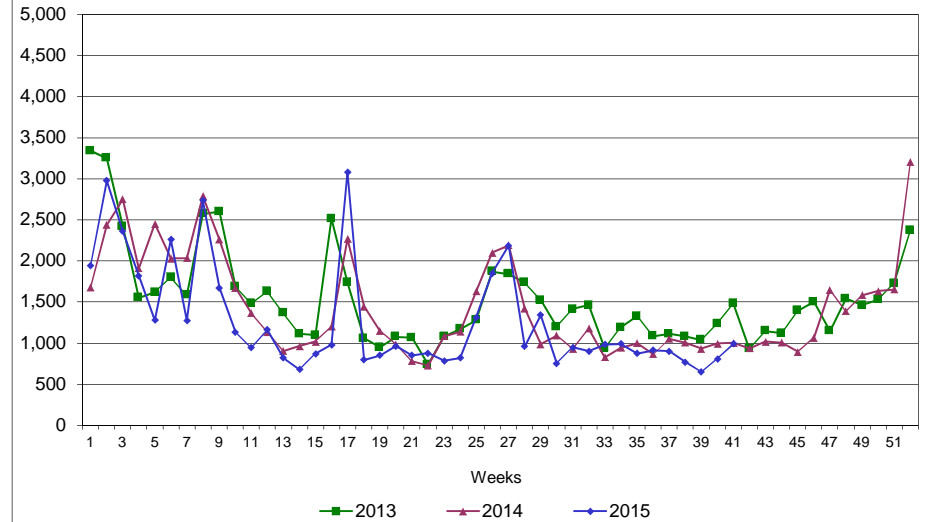
# Rhode Island Department of Labor and Training

## October 10, 2015

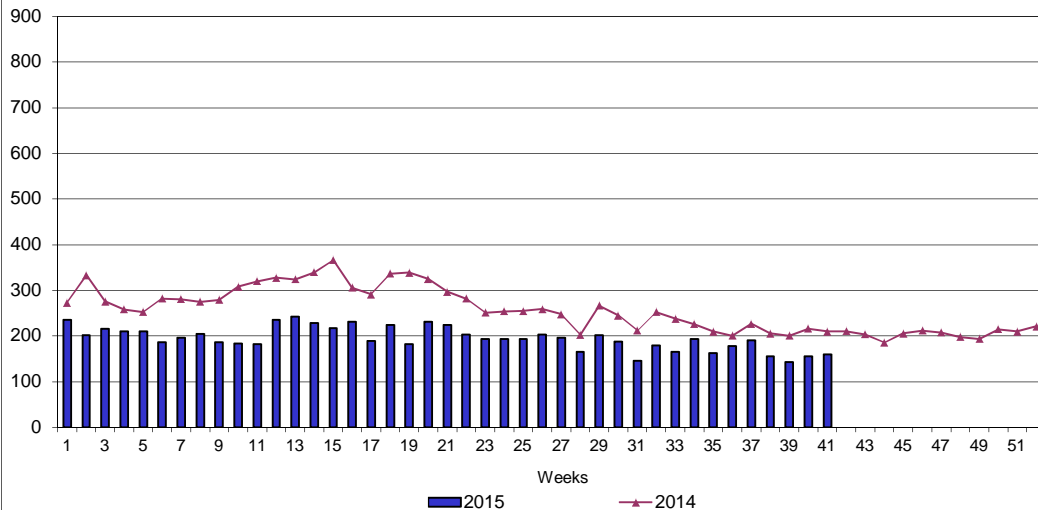
### UI Claims Comparison Year to Date



### UI Initial Claims 2013 - 2015



### UI Exhaustions 2014 - 2015



### TDI Claims Comparison Year to Date

