



## Rhode Island Department of Labor and Training

# *Weekly Update of Claims Activity*

*Week Ending: October 17, 2015*

### *Unemployment Insurance*

**Initial Claims** – 713 initial claims were processed during the week ending 10/17/15, a decrease of 278 from the previous week, and a decrease of 222 from a year ago. The number of initial claims filed to date is down 10.9 percent from last year and down 17.8 percent from two years ago.

**Continued Claims** – 6,580 continued claims were processed during the week of 10/17/15, a decrease of 12 from the previous week and a decrease of 1,186 from a year ago. The number of continued claims filed to date is down 12.9 percent from last year and down 18.6 percent from two years ago.

**Workshare** – gives employers an alternative to layoffs by allowing employees to work reduced hours and collect a percentage of regular UI benefits to compensate for lost pay. This week, 22 initial claims and 141 continued claims were processed. An estimated 4 layoffs were prevented this week, as a result of Workshare.

**Exhaustions** – 159 individuals exhausted their regular payments this week, a decrease of 1 from the previous week and a decrease of 52 from a year ago.

### *Temporary Disability Insurance*

**Temporary Disability Insurance** – 654 initial claims and 6,184 continued claims were processed for Temporary Disability Insurance. The average weekly TDI payment is \$472 per week. Rhode Island is currently paying an average of 10.5 weeks per new claim. To date there have been 38,225 TDI initial claims filed.

**Temporary Caregiver Insurance** – Of the 654 TDI initial claims, 156 (23.9%) were TCI Claims. This week 284 TCI payments were issued totaling \$149,111. The average weekly TCI payment was \$525. Of the 38,225 TDI claims filed in 2015, 5,895 or 15.4% were TCI claims.

	Initial Claims			Continued Claims	TOTAL - Initial and Continued Claims			
	Total	New	Additional		Current Week	Previous Week	Year Ago	Two Years Ago
<b>Total - All programs*</b>	758	510	248	7,115	7,873	8,194	9,479	10,887
<b>UI Claims</b>	713	471	242	6,580	7,293	7,583	8,701	9,967
Change from:								
Previous Week	-278	-198	-80	-12	-290			
Year Ago	-222	-136	-86	-1,186	-1,408			
Two Years Ago	-216	-116	-100	-2,458	-2,674			
<b>Interstate-Liable</b>	23	17	6	394	417	419	475	565
<b>Workshare</b>	22	22	0	141	163	192	303	355
<b>Workshare Equivalency</b>	4	4	0	43	47	48	79	88
<b>UI Exhaustions</b>	-	-	-	159	159	160	211	236
<b>TDI Claims (Includes TCI)</b>	654	504	150	6,184	6,838	8,930	8,102	7,456
Change from:								
Previous Week	-426	-323	-103	-1,666	-2,092			
Year Ago	-247	-185	-62	-1,017	-1,264			

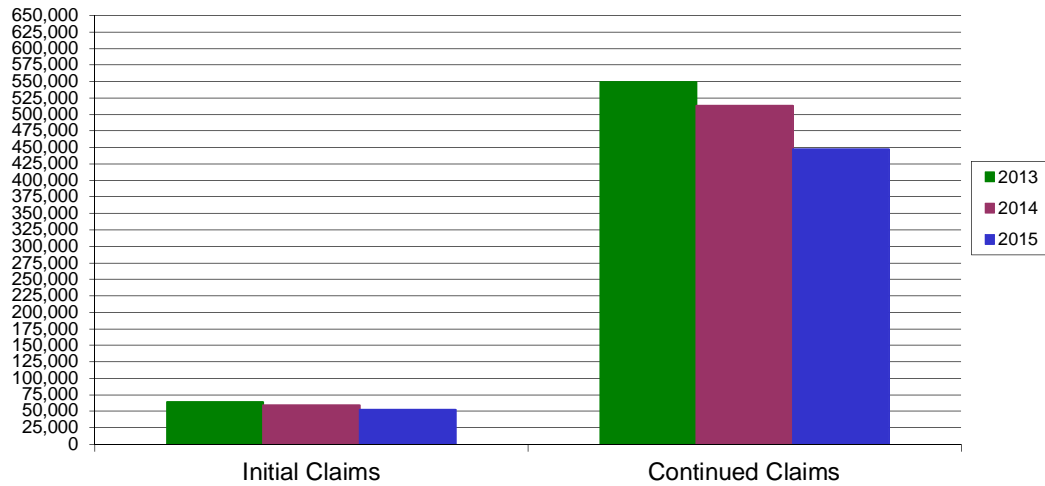
\* Includes UI, Workshare & Interstate Liable.

Equal Opportunity Employer / Program / Auxiliary aids and services available upon request to individuals with disabilities / TTY via RI Relay 711.

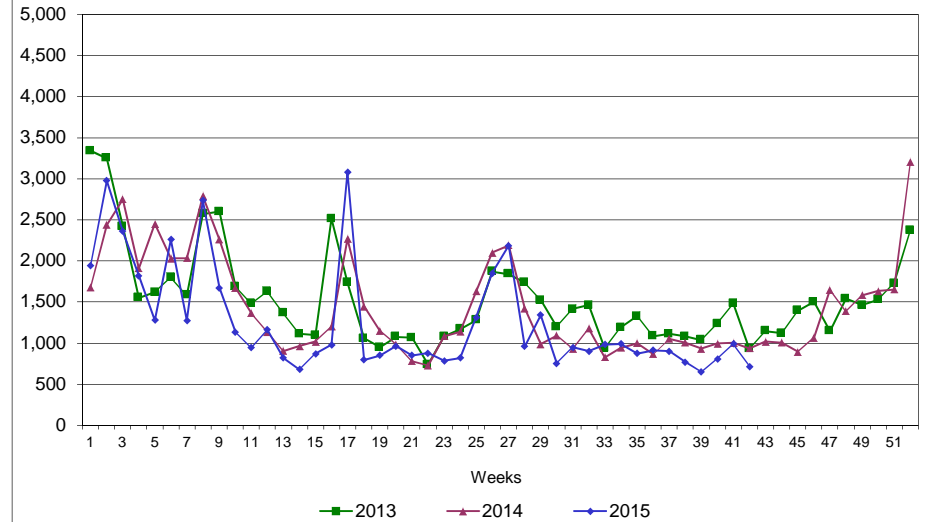
# Rhode Island Department of Labor and Training

## October 17, 2015

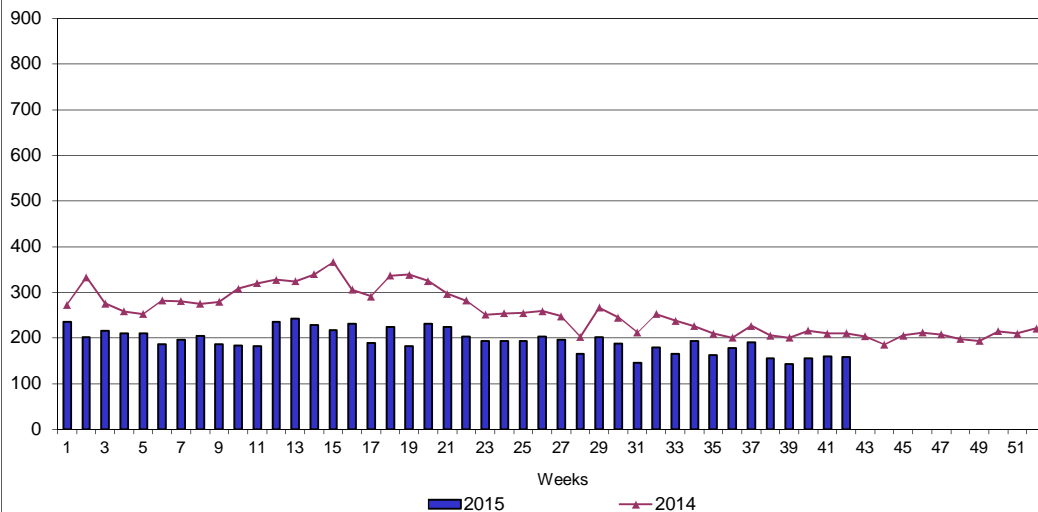
### UI Claims Comparison Year to Date



### UI Initial Claims 2013 - 2015



### UI Exhaustions 2014 - 2015



### TDI Claims Comparison Year to Date

