



Rhode Island Department of Labor and Training

Weekly Update of Claims Activity

Week Ending: October 24, 2015

Unemployment Insurance

Initial Claims – 839 initial claims were processed during the week ending 10/24/15, an increase of 126 from the previous week, and a decrease of 178 from a year ago. The number of initial claims filed to date is down 11.0 percent from last year and down 18.0 percent from two years ago.

Continued Claims – 6,624 continued claims were processed during the week of 10/24/15, an increase of 44 from the previous week and a decrease of 1,225 from a year ago. The number of continued claims filed to date is down 13.0 percent from last year and down 18.8 percent from two years ago.

Workshare – gives employers an alternative to layoffs by allowing employees to work reduced hours and collect a percentage of regular UI benefits to compensate for lost pay. This week, 7 initial claims and 158 continued claims were processed. An estimated 2 layoffs were prevented this week, as a result of Workshare.

Exhaustions – 138 individuals exhausted their regular payments this week, a decrease of 21 from the previous week and a decrease of 66 from a year ago.

Temporary Disability Insurance

Temporary Disability Insurance – 860 initial claims and 7,276 continued claims were processed for Temporary Disability Insurance. The average weekly TDI payment is \$466 per week. Rhode Island is currently paying an average of 10.5 weeks per new claim. To date there have been 39,085 TDI initial claims filed.

Temporary Caregiver Insurance – Of the 860 TDI initial claims, 174 (20.2%) were TCI Claims. This week 352 TCI payments were issued totaling \$186,493. The average weekly TCI payment was \$530. Of the 39,085 TDI claims filed in 2015, 6,069 or 15.5% were TCI claims.

	Initial Claims			Continued Claims	TOTAL - Initial and Continued Claims			
	Total	New	Additional		Current Week	Previous Week	Year Ago	Two Years Ago
Total - All programs*	885	596	289	7,185	8,070	7,873	9,596	11,477
UI Claims	839	565	274	6,624	7,463	7,293	8,866	10,299
Change from:								
Previous Week	126	94	32	44	170			
Year Ago	-178	-84	-94	-1,225	-1,403			
Two Years Ago	-307	-129	-178	-2,529	-2,836			
Interstate-Liable	39	25	14	403	442	417	502	653
Workshare	7	6	1	158	165	163	228	525
Workshare Equivalency	2	2	0	44	46	47	55	124
UI Exhaustions	-	-	-	138	138	159	204	241
TDI Claims (Includes TCI)	860	670	190	7,276	8,136	6,838	8,801	8,055
Change from:								
Previous Week	206	166	40	1,092	1,298			
Year Ago	-48	-34	-14	-617	-665			

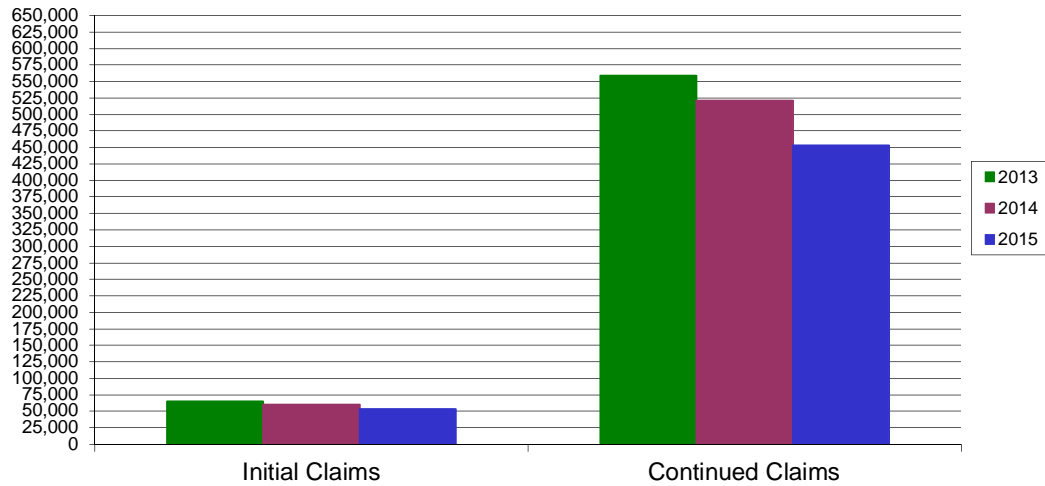
* Includes UI, Workshare & Interstate Liable.

Equal Opportunity Employer / Program / Auxiliary aids and services available upon request to individuals with disabilities / TTY via RI Relay 711.

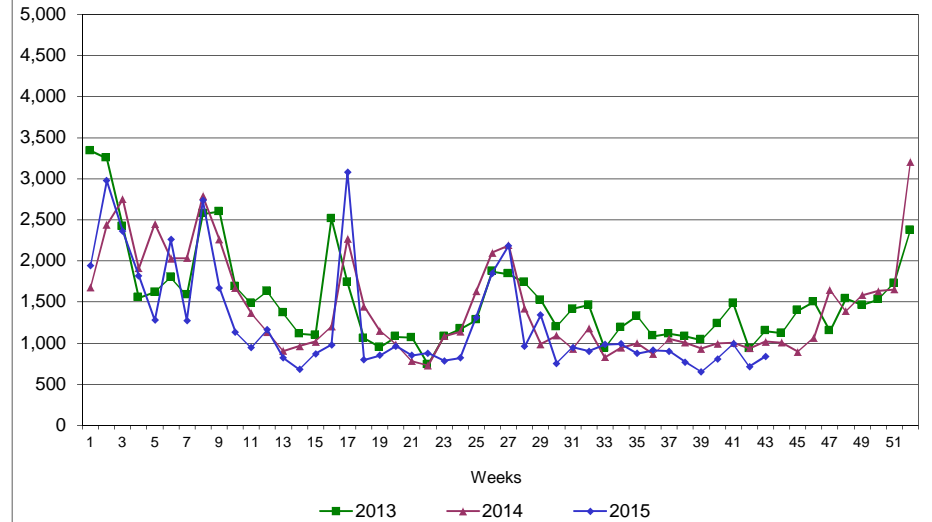
Rhode Island Department of Labor and Training

October 24, 2015

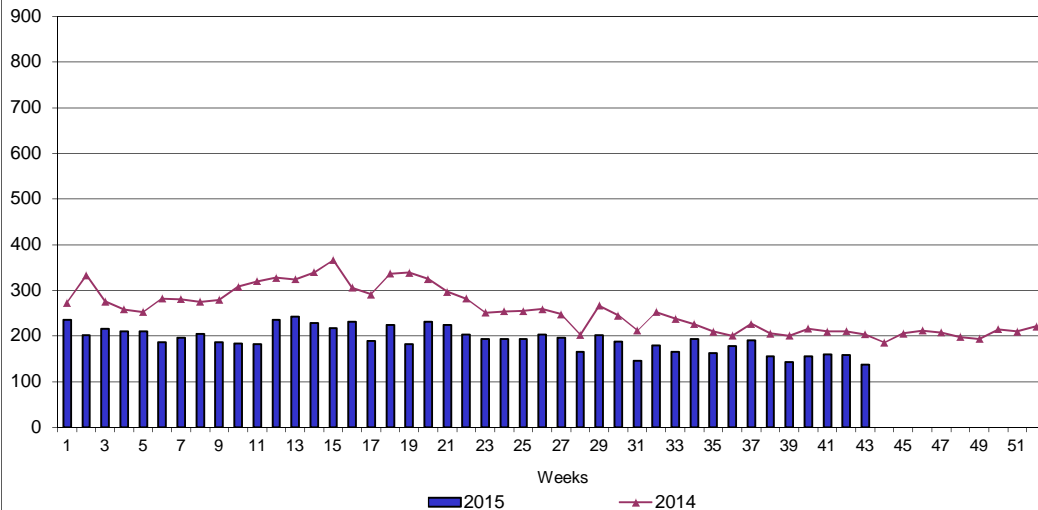
UI Claims Comparison Year to Date



UI Initial Claims 2013 - 2015



UI Exhaustions 2014 - 2015



TDI Claims Comparison Year to Date

