



## Rhode Island Department of Labor and Training

# *Weekly Update of Claims Activity*

*Week Ending: November 7, 2015*

### *Unemployment Insurance*

**Initial Claims** – 1,023 initial claims were processed during the week ending 11/7/15, an increase of 95 from the previous week, and an increase of 128 from a year ago. The number of initial claims filed to date is down 10.6 percent from last year and down 18.1 percent from two years ago.

**Continued Claims** – 6,709 continued claims were processed during the week of 11/7/15, an increase of 159 from the previous week and a decrease of 1,054 from a year ago. The number of continued claims filed to date is down 13.0 percent from last year and down 19.1 percent from two years ago.

**Workshare** – gives employers an alternative to layoffs by allowing employees to work reduced hours and collect a percentage of regular UI benefits to compensate for lost pay. This week, 6 initial claims and 186 continued claims were processed. An estimated 2 layoffs were prevented this week, as a result of Workshare.

**Exhaustions** – 149 individuals exhausted their regular payments this week, a decrease of 4 from the previous week and a decrease of 57 from a year ago.

### *Temporary Disability Insurance*

**Temporary Disability Insurance** – 1,110 initial claims and 7,135 continued claims were processed for Temporary Disability Insurance. The average weekly TDI payment is \$461 per week. Rhode Island is currently paying an average of 10.4 weeks per new claim. To date there have been 40,994 TDI initial claims filed.

**Temporary Caregiver Insurance** – Of the 1,110 TDI initial claims, 161 (14.5%) were TCI Claims. This week 398 TCI payments were issued totaling \$198,291. The average weekly TCI payment was \$498. Of the 40,994 TDI claims filed in 2015, 6,405 or 15.6% were TCI claims.

	Initial Claims			Continued Claims	TOTAL - Initial and Continued Claims			
	Total	New	Additional		Current Week	Previous Week	Year Ago	Two Years Ago
<b>Total - All programs*</b>	1,059	678	381	7,321	8,380	8,150	9,378	11,997
<b>UI Claims</b>	1,023	653	370	6,709	7,732	7,478	8,658	10,906
Change from:								
Previous Week	95	25	70	159	254			
Year Ago	128	99	29	-1,054	-926			
Two Years Ago	-374	-214	-160	-2,800	-3,174			
<b>Interstate-Liable</b>	30	19	11	426	456	460	503	669
<b>Workshare</b>	6	6	0	186	192	212	217	422
<b>Workshare Equivalency</b>	2	2	0	53	55	70	53	103
<b>UI Exhaustions</b>	-	-	-	149	149	153	206	241
<b>TDI Claims (Includes TCI)</b>	1,110	854	256	7,135	8,245	8,360	7,815	6,287
Change from:								
Previous Week	311	230	81	-426	-115			
Year Ago	469	376	93	-39	430			

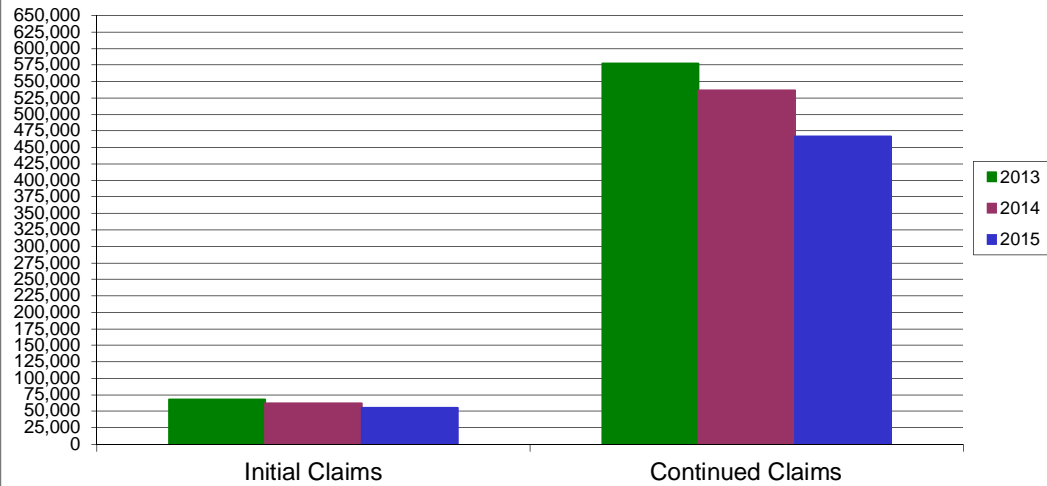
\* Includes UI, Workshare & Interstate Liable.

Equal Opportunity Employer / Program / Auxiliary aids and services available upon request to individuals with disabilities / TTY via RI Relay 711.

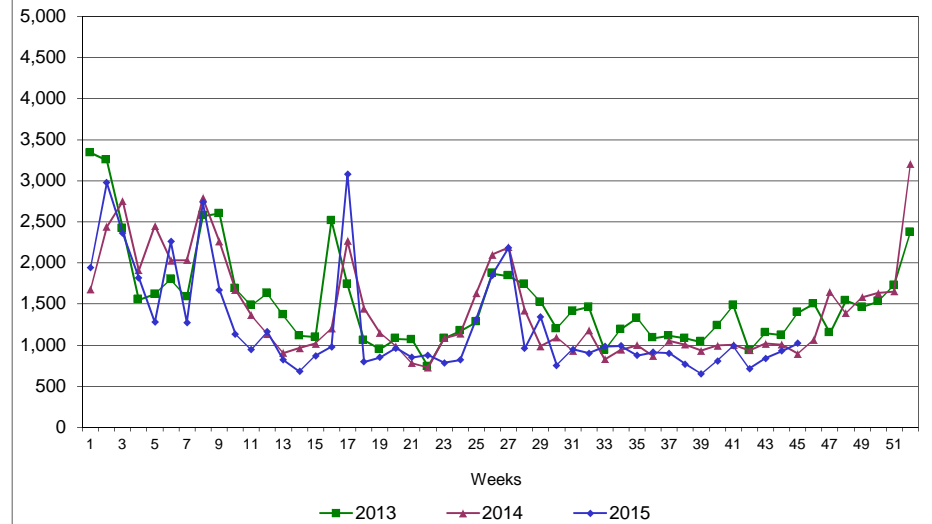
# Rhode Island Department of Labor and Training

## November 7, 2015

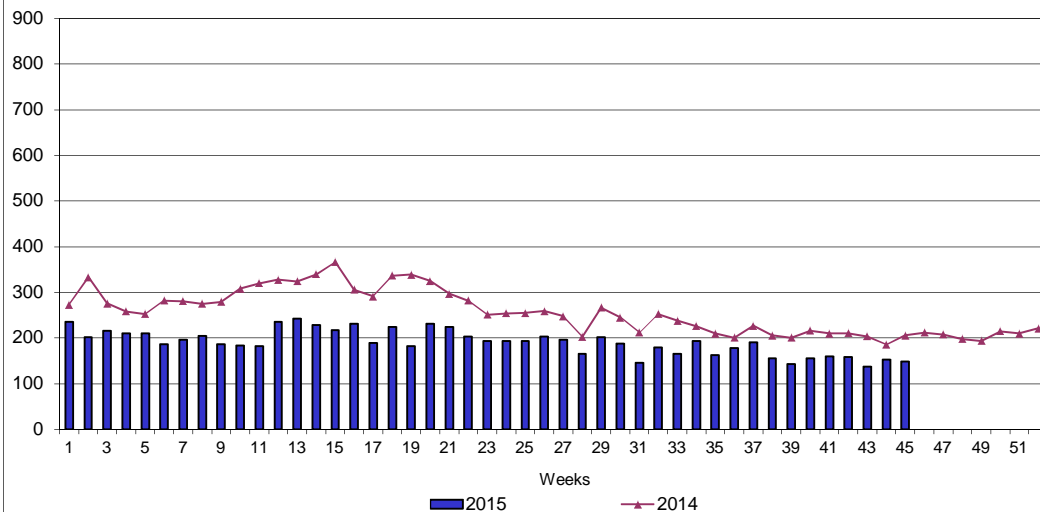
### UI Claims Comparison Year to Date



### UI Initial Claims 2013 - 2015



### UI Exhaustions 2014 - 2015



### TDI Claims Comparison Year to Date

