



Rhode Island Department of Labor and Training

Weekly Update of Claims Activity

Week Ending: November 14, 2015

Unemployment Insurance

Initial Claims – 1,062 initial claims were processed during the week ending 11/14/15, an increase of 39 from the previous week, and a decrease of 2 from a year ago. The number of initial claims filed to date is down 10.4 percent from last year and down 18.4 percent from two years ago.

Continued Claims – 6,981 continued claims were processed during the week of 11/14/15, an increase of 272 from the previous week and a decrease of 946 from a year ago. The number of continued claims filed to date is down 13.0 percent from last year and down 19.0 percent from two years ago.

Workshare – gives employers an alternative to layoffs by allowing employees to work reduced hours and collect a percentage of regular UI benefits to compensate for lost pay. This week, 16 initial claims and 200 continued claims were processed. An estimated 6 layoffs were prevented this week, as a result of Workshare.

Exhaustions – 133 individuals exhausted their regular payments this week, a decrease of 16 from the previous week and a decrease of 79 from a year ago.

Temporary Disability Insurance

Temporary Disability Insurance – 901 initial claims and 6,165 continued claims were processed for Temporary Disability Insurance. The average weekly TDI payment is \$459 per week. Rhode Island is currently paying an average of 10.3 weeks per new claim. To date there have been 41,895 TDI initial claims filed.

Temporary Caregiver Insurance – Of the 901 TDI initial claims, 148 (16.4%) were TCI Claims. This week 321 TCI payments were issued totaling \$151,244. The average weekly TCI payment was \$471. Of the 41,895 TDI claims filed in 2015, 6,553 or 15.6% were TCI claims.

	Initial Claims			Continued Claims	TOTAL - Initial and Continued Claims			
	Total	New	Additional		Current Week	Previous Week	Year Ago	Two Years Ago
Total - All programs*	1,117	745	372	7,642	8,759	8,380	9,752	8,977
UI Claims	1,062	704	358	6,981	8,043	7,732	8,991	8,465
Change from:								
Previous Week	39	51	-12	272	311			
Year Ago	-2	20	-22	-946	-948			
Two Years Ago	623	443	180	-1,045	-422			
Interstate-Liable	39	28	11	461	500	456	504	510
Workshare	16	13	3	200	216	192	257	2
Workshare Equivalency	6	5	1	57	63	55	64	1
UI Exhaustions	-	-	-	133	133	149	212	281
TDI Claims (Includes TCI)	901	709	192	6,165	7,066	8,245	7,626	6,907
Change from:								
Previous Week	-209	-145	-64	-970	-1,179			
Year Ago	272	217	55	-832	-560			

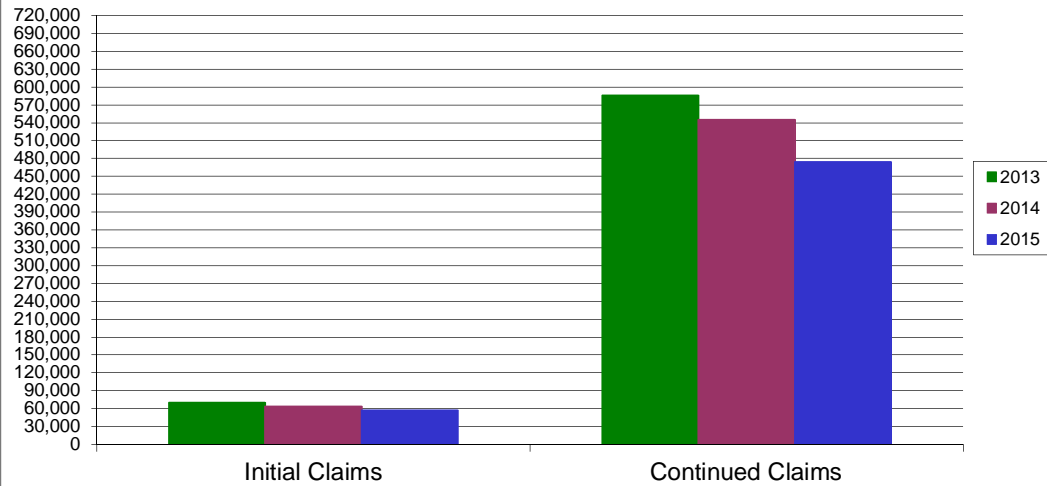
* Includes UI, Workshare & Interstate Liable.

Equal Opportunity Employer / Program / Auxiliary aids and services available upon request to individuals with disabilities / TTY via RI Relay 711.

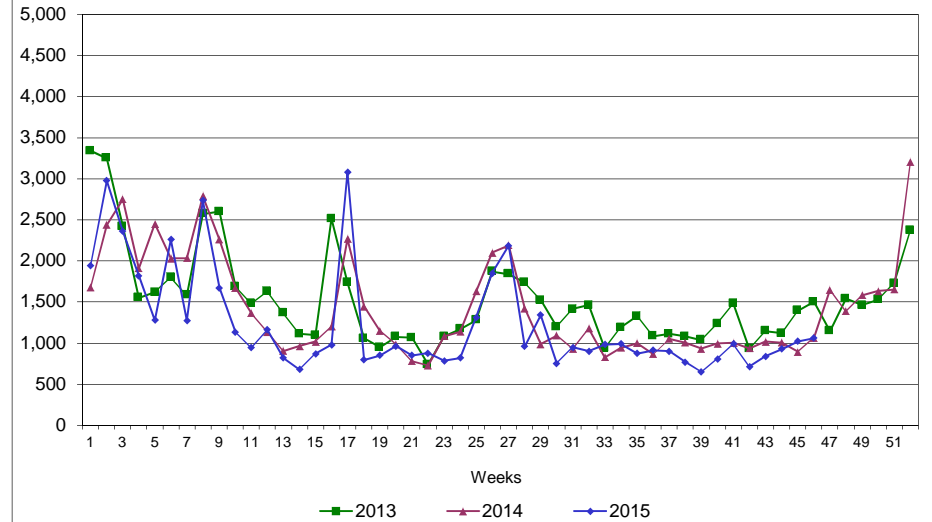
Rhode Island Department of Labor and Training

November 14, 2015

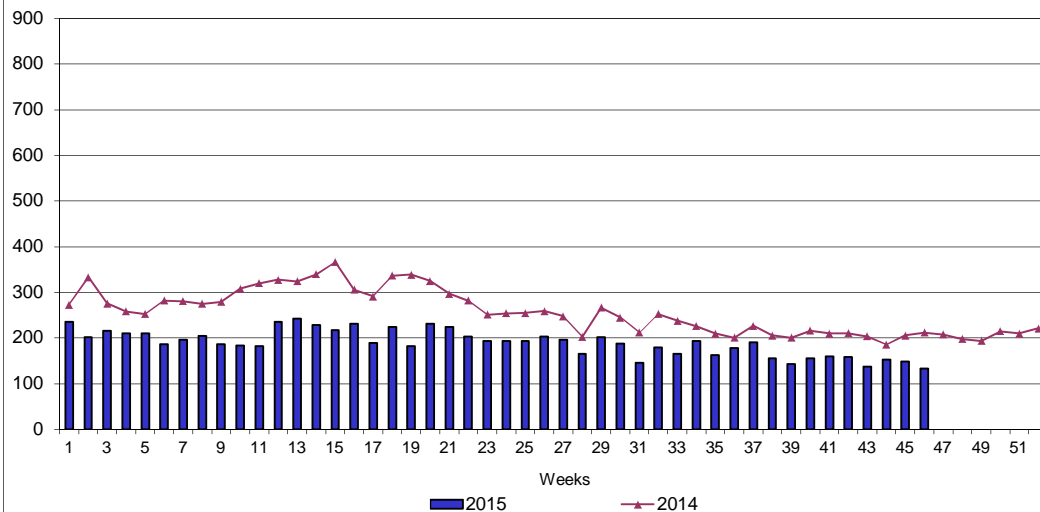
UI Claims Comparison Year to Date



UI Initial Claims 2013 - 2015



UI Exhaustions 2014 - 2015



TDI Claims Comparison Year to Date

