



Rhode Island Department of Labor and Training

Weekly Update of Claims Activity

Week Ending: November 21, 2015

Unemployment Insurance

Initial Claims – 835 initial claims were processed during the week ending 11/21/15, a decrease of 227 from the previous week, and a decrease of 814 from a year ago. The number of initial claims filed to date is down 11.4 percent from last year and down 18.5 percent from two years ago.

Continued Claims – 7,258 continued claims were processed during the week of 11/21/15, an increase of 277 from the previous week and a decrease of 1,220 from a year ago. The number of continued claims filed to date is down 13.1 percent from last year and down 19.1 percent from two years ago.

Workshare – gives employers an alternative to layoffs by allowing employees to work reduced hours and collect a percentage of regular UI benefits to compensate for lost pay. This week, 19 initial claims and 191 continued claims were processed. An estimated 7 layoffs were prevented this week, as a result of Workshare.

Exhaustions – 149 individuals exhausted their regular payments this week, an increase of 16 from the previous week and a decrease of 59 from a year ago.

Temporary Disability Insurance

Temporary Disability Insurance – 985 initial claims and 7,771 continued claims were processed for Temporary Disability Insurance. The average weekly TDI payment is \$473 per week. Rhode Island is currently paying an average of 10.4 weeks per new claim. To date there have been 42,880 TDI initial claims filed.

Temporary Caregiver Insurance – Of the 985 TDI initial claims, 202 (20.5%) were TCI Claims. This week 425 TCI payments were issued totaling \$236,211. The average weekly TCI payment was \$556. Of the 42,880 TDI claims filed in 2015, 6,755 or 15.8% were TCI claims.

	Initial Claims			Continued Claims	TOTAL - Initial and Continued Claims			
	Total	New	Additional		Current Week	Previous Week	Year Ago	Two Years Ago
Total - All programs*	875	557	318	7,927	8,802	8,759	10,996	N/A
UI Claims	835	525	310	7,258	8,093	8,043	10,127	N/A
Change from:								
Previous Week	-227	-179	-48	277	50			
Year Ago	-814	-524	-290	-1,220	-2,034			
Two Years Ago	N/A	N/A	N/A	N/A	N/A			
Interstate-Liable	21	13	8	478	499	500	548	N/A
Workshare	19	19	0	191	210	216	321	N/A
Workshare Equivalency	7	7	0	55	62	63	78	N/A
UI Exhaustions	-	-	-	149	149	133	208	270
TDI Claims (Includes TCI)	985	779	206	7,771	8,756	7,066	9,436	10,652
Change from:								
Previous Week	84	70	14	1,606	1,690			
Year Ago	-345	-261	-84	-335	-680			

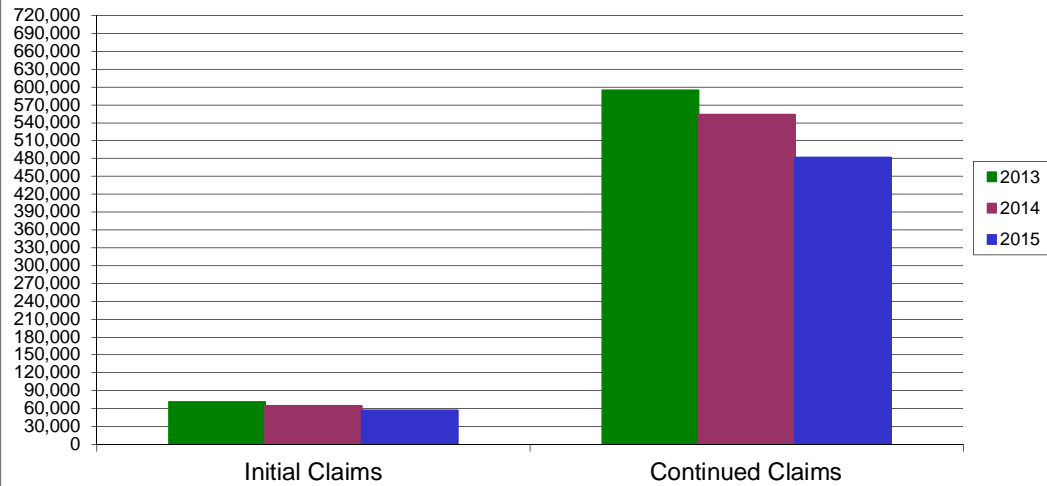
* Includes UI, Workshare & Interstate Liable.

Equal Opportunity Employer / Program / Auxiliary aids and services available upon request to individuals with disabilities / TTY via RI Relay 711.

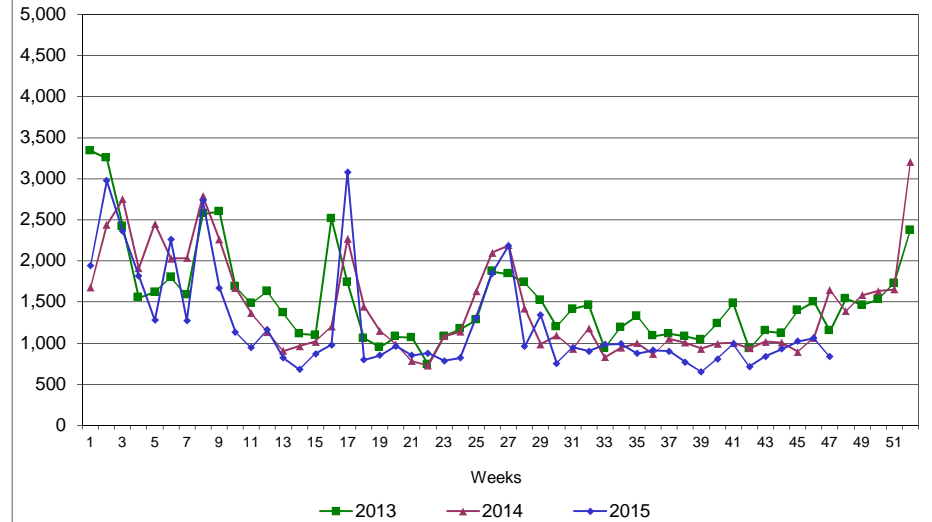
Rhode Island Department of Labor and Training

November 21, 2015

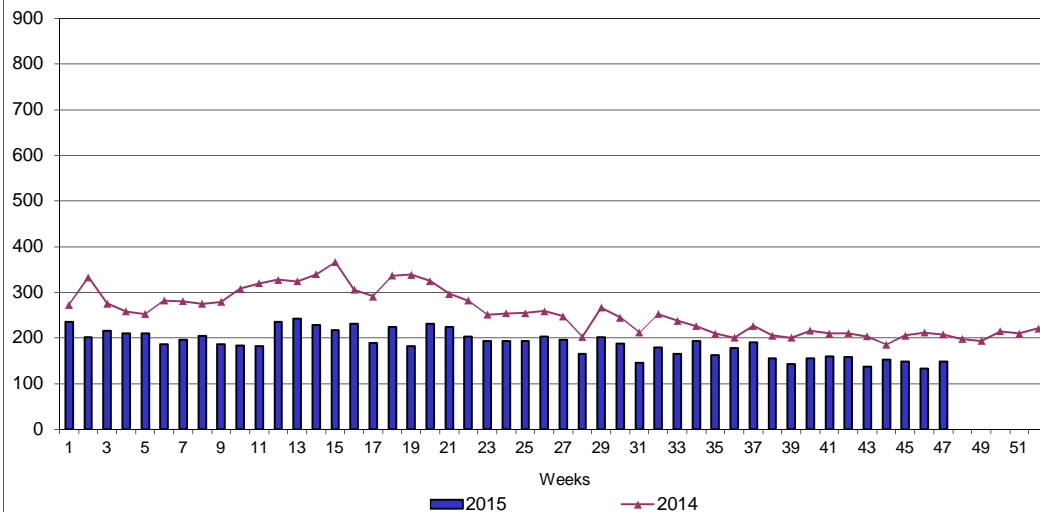
UI Claims Comparison Year to Date



UI Initial Claims 2013 - 2015



UI Exhaustions 2014 - 2015



TDI Claims Comparison Year to Date

