



Rhode Island Department of Labor and Training

Weekly Update of Claims Activity

Week Ending: December 5, 2015

Unemployment Insurance

Initial Claims – 1,247 initial claims were processed during the week ending 12/5/15, an increase of 363 from the previous week, and a decrease of 335 from a year ago. The number of initial claims filed to date is down 12.2 percent from last year and down 18.9 percent from two years ago.

Continued Claims – 7,863 continued claims were processed during the week of 12/5/15, an increase of 603 from the previous week and a decrease of 1,615 from a year ago. The number of continued claims filed to date is down 13.2 percent from last year and down 19.5 percent from two years ago.

Workshare – gives employers an alternative to layoffs by allowing employees to work reduced hours and collect a percentage of regular UI benefits to compensate for lost pay. This week, 6 initial claims and 153 continued claims were processed. An estimated 2 layoffs were prevented this week, as a result of Workshare.

Exhaustions – 151 individuals exhausted their regular payments this week, a decrease of 1 from the previous week and a decrease of 43 from a year ago.

Temporary Disability Insurance

Temporary Disability Insurance – 872 initial claims and 7,036 continued claims were processed for Temporary Disability Insurance. The average weekly TDI payment is \$471 per week. Rhode Island is currently paying an average of 10.3 weeks per new claim. To date there have been 44,308 TDI initial claims filed.

Temporary Caregiver Insurance – Of the 872 TDI initial claims, 164 (18.8%) were TCI Claims. This week 336 TCI payments were issued totaling \$173,129. The average weekly TCI payment was \$515. Of the 44,308 TDI claims filed in 2015, 7,071 or 16.0% were TCI claims.

	Initial Claims			Continued Claims	TOTAL - Initial and Continued Claims			
	Total	New	Additional		Current Week	Previous Week	Year Ago	Two Years Ago
Total - All programs*	1,287	692	595	8,519	9,806	8,989	11,903	13,847
UI Claims	1,247	675	572	7,863	9,110	8,144	11,060	12,875
Change from:								
Previous Week	363	214	149	603	966			
Year Ago	-335	-230	-105	-1,615	-1,950			
Two Years Ago	-214	-122	-92	-3,551	-3,765			
Interstate-Liable	34	15	19	503	537	502	574	657
Workshare	6	2	4	153	159	343	269	315
Workshare Equivalency	2	1	1	42	44	95	64	81
UI Exhaustions	-	-	-	151	151	152	194	266
TDI Claims (Includes TCI)	872	662	210	7,036	7,908	6,967	7,859	6,608
Change from:								
Previous Week	316	240	76	625	941			
Year Ago	72	29	43	-23	49			

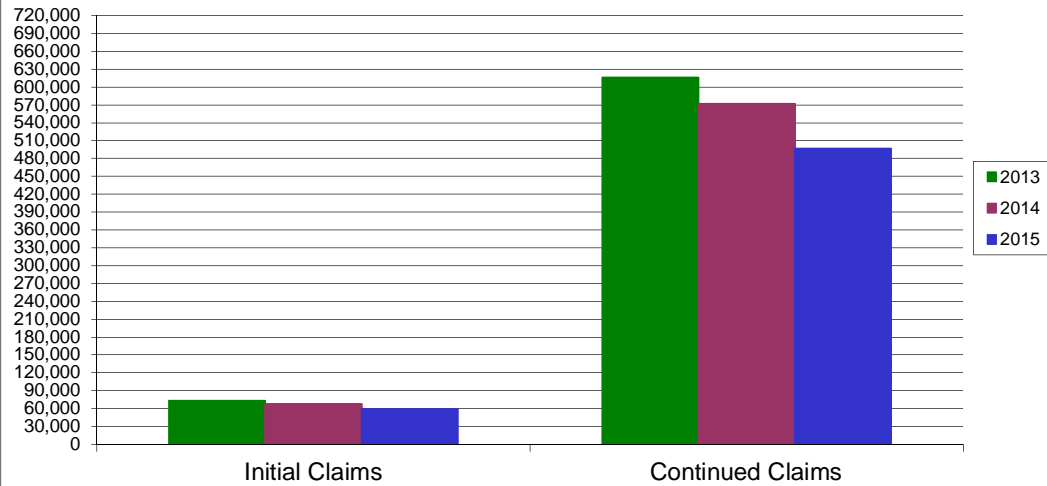
* Includes UI, Workshare & Interstate Liable.

Equal Opportunity Employer / Program / Auxiliary aids and services available upon request to individuals with disabilities / TTY via RI Relay 711.

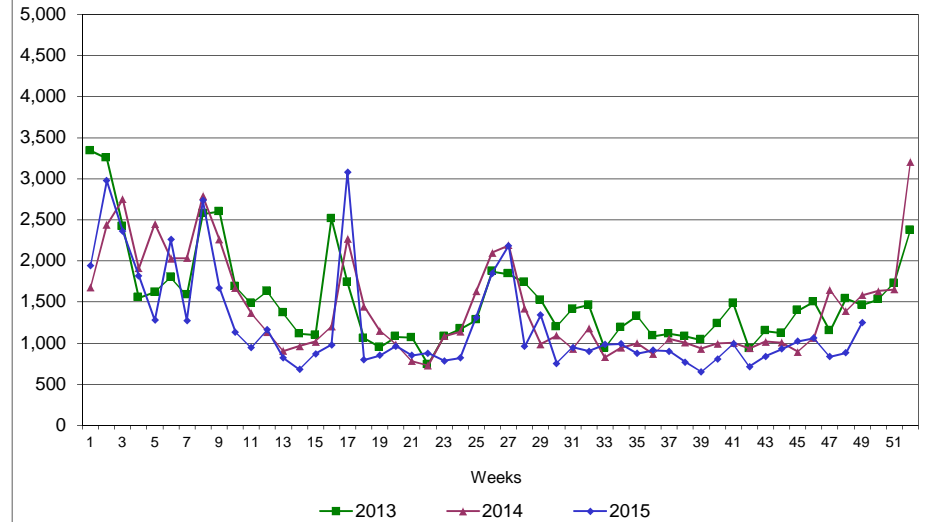
Rhode Island Department of Labor and Training

December 5, 2015

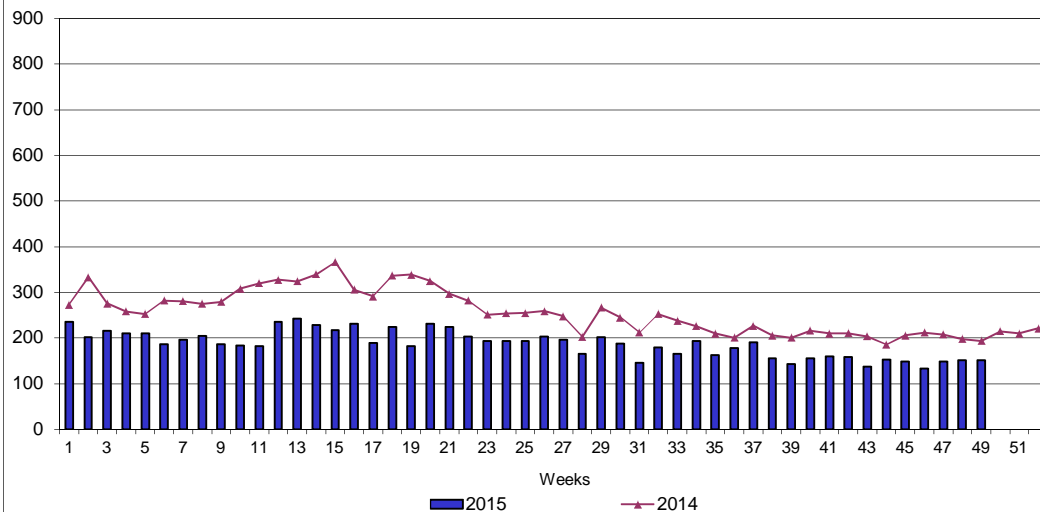
UI Claims Comparison Year to Date



UI Initial Claims 2013 - 2015



UI Exhaustions 2014 - 2015



TDI Claims Comparison Year to Date

