



Rhode Island Department of Labor and Training

Weekly Update of Claims Activity

Week Ending: December 19, 2015

Unemployment Insurance

Initial Claims – 1,388 initial claims were processed during the week ending 12/19/15, a decrease of 57 from the previous week, and a decrease of 266 from a year ago. The number of initial claims filed to date is down 12.2 percent from last year and down 18.7 percent from two years ago.

Continued Claims – 8,533 continued claims were processed during the week of 12/19/15, an increase of 386 from the previous week and a decrease of 1,664 from a year ago. The number of continued claims filed to date is down 13.2 percent from last year and down 19.8 percent from two years ago.

Workshare – gives employers an alternative to layoffs by allowing employees to work reduced hours and collect a percentage of regular UI benefits to compensate for lost pay. This week, 5 initial claims and 186 continued claims were processed. An estimated 1 layoff was prevented this week, as a result of Workshare.

Exhaustions – 174 individuals exhausted their regular payments this week, a decrease of 1 from the previous week and a decrease of 36 from a year ago.

Temporary Disability Insurance

Temporary Disability Insurance – 791 initial claims and 7,524 continued claims were processed for Temporary Disability Insurance. The average weekly TDI payment is \$462 per week. Rhode Island is currently paying an average of 10.4 weeks per new claim. To date there have been 46,179 TDI initial claims filed.

Temporary Caregiver Insurance – Of the 791 TDI initial claims, 154 (19.5%) were TCI Claims. This week 375 TCI payments were issued totaling \$190,071. The average weekly TCI payment was \$507. Of the 46,179 TDI claims filed in 2015, 7,407 or 16.0% were TCI claims.

	Initial Claims			Continued Claims	TOTAL - Initial and Continued Claims			
	Total	New	Additional		Current Week	Previous Week	Year Ago	Two Years Ago
Total - All programs*	1,427	809	618	9,232	10,659	10,326	12,632	14,307
UI Claims	1,388	782	606	8,533	9,921	9,592	11,851	13,325
Change from:								
Previous Week	-57	-118	61	386	329			
Year Ago	-266	-180	-86	-1,664	-1,930			
Two Years Ago	-338	-58	-280	-3,066	-3,404			
Interstate-Liable	34	22	12	513	547	544	585	657
Workshare	5	5	0	186	191	190	196	325
Workshare Equivalency	1	1	0	49	50	49	49	78
UI Exhaustions	-	-	-	174	174	175	210	292
TDI Claims (Includes TCI)	791	598	193	7,524	8,315	9,207	8,200	7,502
Change from:								
Previous Week	-289	-235	-54	-603	-892			
Year Ago	16	32	-16	99	115			

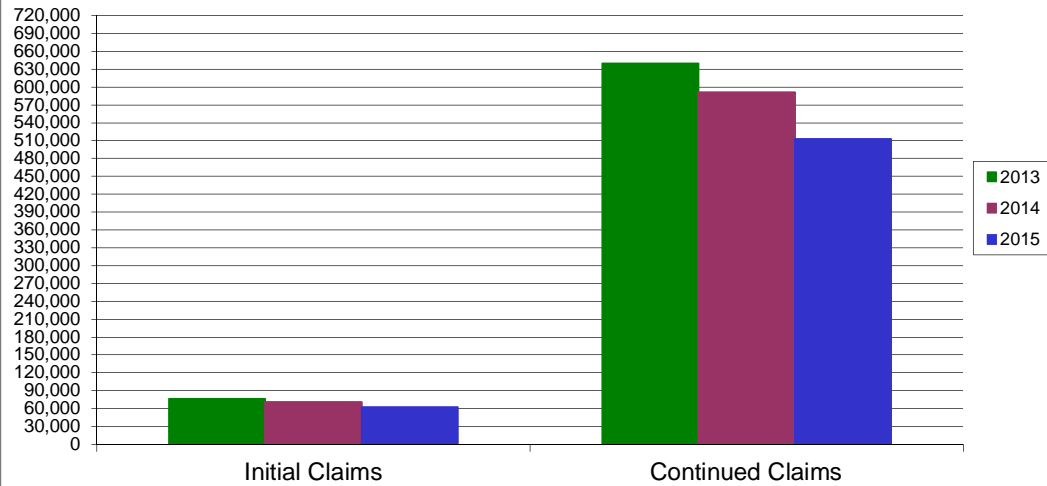
* Includes UI, Workshare & Interstate Liable.

Equal Opportunity Employer / Program / Auxiliary aids and services available upon request to individuals with disabilities / TTY via RI Relay 711.

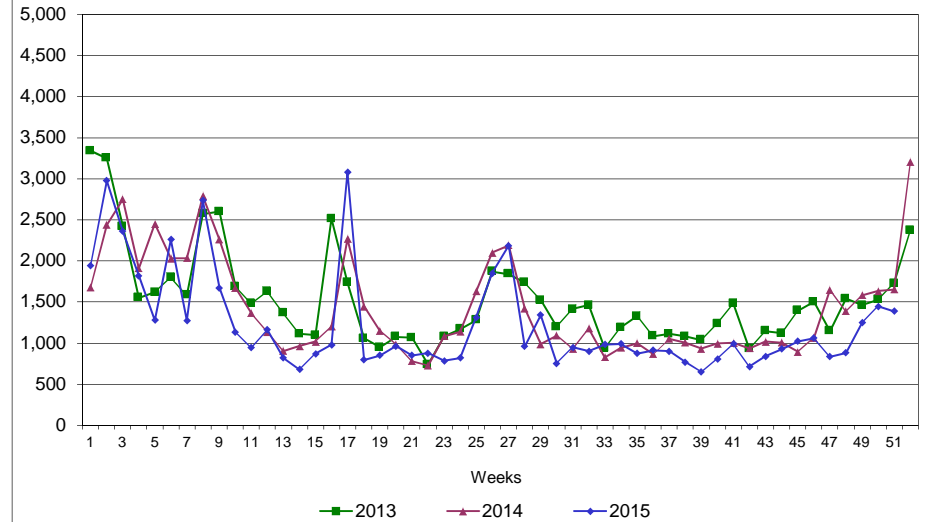
Rhode Island Department of Labor and Training

December 19, 2015

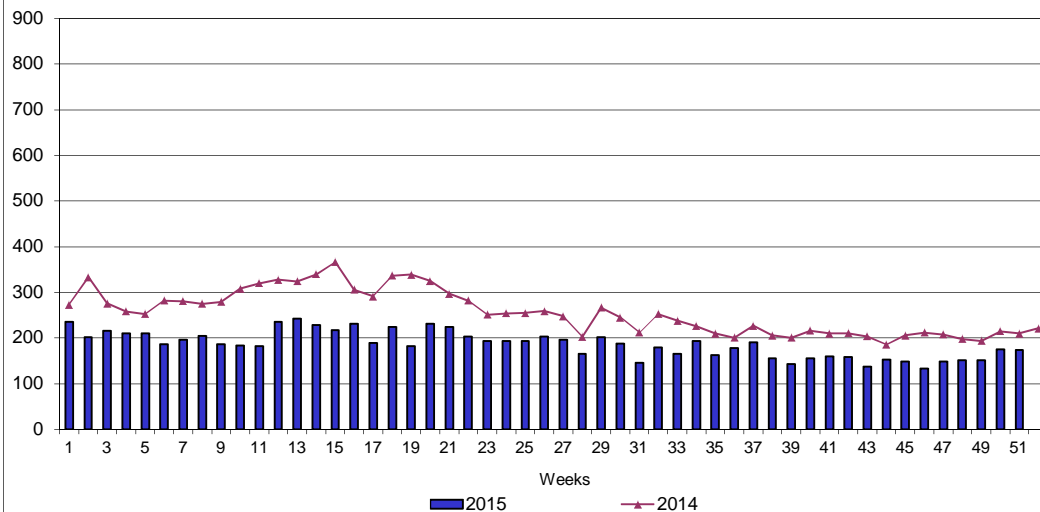
UI Claims Comparison Year to Date



UI Initial Claims 2013 - 2015



UI Exhaustions 2014 - 2015



TDI Claims Comparison Year to Date

