



Rhode Island Department of Labor and Training

Weekly Update of Claims Activity

Week Ending: December 26, 2015

Unemployment Insurance

Initial Claims – 2,609 initial claims were processed during the week ending 12/26/15, an increase of 1,221 from the previous week, and a decrease of 594 from a year ago. The number of initial claims filed to date is down 12.5 percent from last year and down 17.8 percent from two years ago.

Continued Claims – 8,752 continued claims were processed during the week of 12/26/15, an increase of 219 from the previous week and a decrease of 1,546 from a year ago. The number of continued claims filed to date is down 13.3 percent from last year and down 19.9 percent from two years ago.

Workshare – gives employers an alternative to layoffs by allowing employees to work reduced hours and collect a percentage of regular UI benefits to compensate for lost pay. This week, 4 initial claims and 223 continued claims were processed. An estimated 2 layoffs were prevented this week, as a result of Workshare.

Exhaustions – 168 individuals exhausted their regular payments this week, a decrease of 6 from the previous week and a decrease of 53 from a year ago.

Temporary Disability Insurance

Temporary Disability Insurance – 408 initial claims and 7,127 continued claims were processed for Temporary Disability Insurance. The average weekly TDI payment is \$475 per week. Rhode Island is currently paying an average of 10.4 weeks per new claim. To date there have been 46,587 TDI initial claims filed.

Temporary Caregiver Insurance – Of the 408 TDI initial claims, 154 (37.7%) were TCI Claims. This week 374 TCI payments were issued totaling \$192,053. The average weekly TCI payment was \$514. Of the 46,587 TDI claims filed in 2015, 7,558 or 16.2% were TCI claims.

	Initial Claims			Continued Claims	TOTAL - Initial and Continued Claims			
	Total	New	Additional		Current Week	Previous Week	Year Ago	Two Years Ago
Total - All programs*	2,658	1,317	1,341	9,483	12,141	10,659	14,231	15,226
UI Claims	2,609	1,293	1,316	8,752	11,361	9,921	13,501	14,123
Change from:								
Previous Week	1,221	511	710	219	1,440			
Year Ago	-594	-204	-390	-1,546	-2,140			
Two Years Ago	237	196	41	-2,999	-2,762			
Interstate-Liable	45	23	22	508	553	547	567	643
Workshare	4	1	3	223	227	191	163	460
Workshare Equivalency	2	0	2	57	59	50	38	126
UI Exhaustions	-	-	-	168	168	174	221	267
TDI Claims (Includes TCI)	408	321	87	7,127	7,535	8,315	7,787	6,362
Change from:								
Previous Week	-383	-277	-106	-397	-780			
Year Ago	36	31	5	-288	-252			

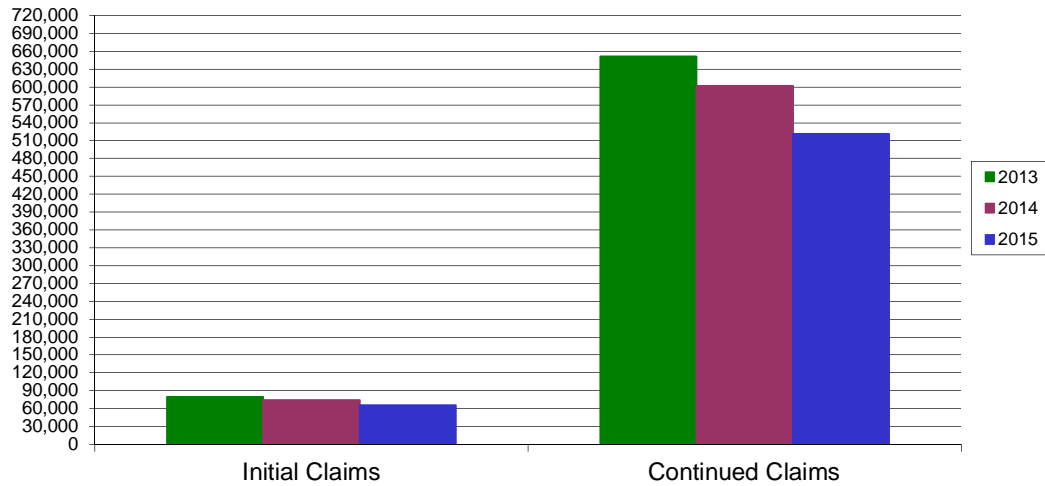
* Includes UI, Workshare & Interstate Liable.

Equal Opportunity Employer / Program / Auxiliary aids and services available upon request to individuals with disabilities / TTY via RI Relay 71

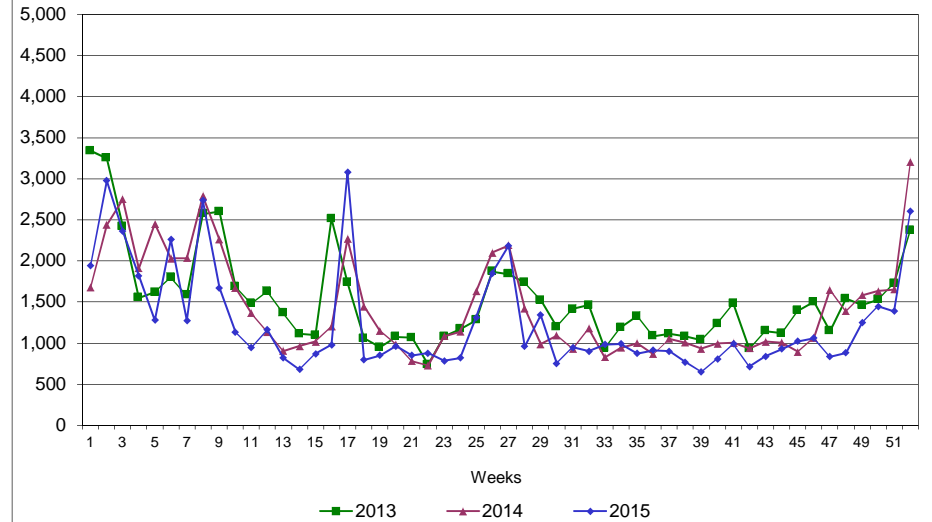
Rhode Island Department of Labor and Training

December 26, 2015

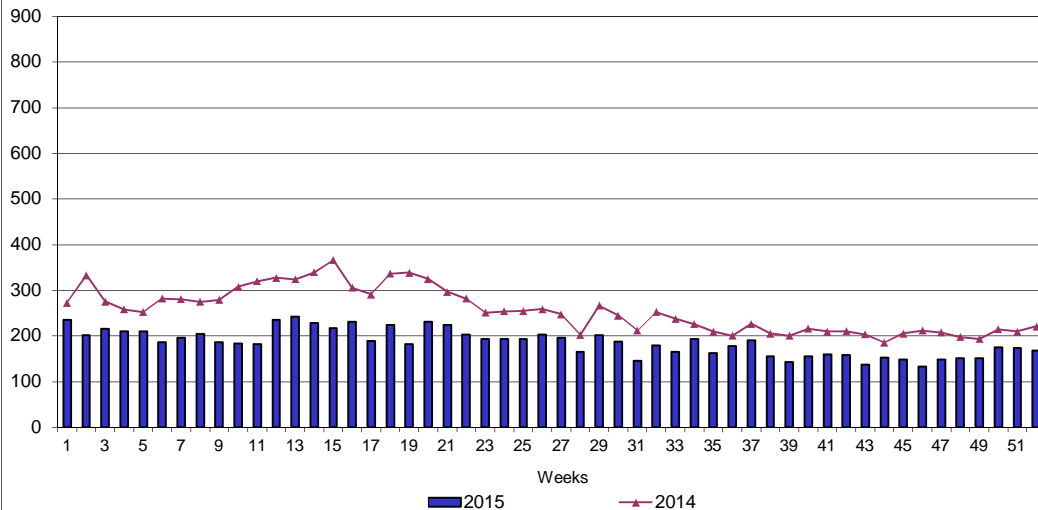
UI Claims Comparison Year to Date



UI Initial Claims 2013 - 2015



UI Exhaustions 2014 - 2015



TDI Claims Comparison Year to Date

