



Rhode Island Department of Labor and Training

Weekly Update of Claims Activity

Week Ending: June 4, 2016

Unemployment Insurance

Initial Claims – 727 initial claims were processed during the week ending 6/4/16, a decrease of 116 from the previous week, and a decrease of 56 from a year ago. The number of initial claims filed to date is down 5.9 percent from last year and down 15.9 percent from two years ago.

Continued Claims – 7,523 continued claims were processed during the week of 6/4/16, a decrease of 155 from the previous week and a decrease of 372 from a year ago. The number of continued claims filed to date is down 11.4 percent from last year and down 22.9 percent from two years ago.

Workshare – gives employers an alternative to layoffs by allowing employees to work reduced hours and collect a percentage of regular UI benefits to compensate for lost pay. This week, 48 initial claims and 732 continued claims were processed. An estimated 10 layoffs were prevented this week, as a result of Workshare.

Exhaustions – 167 individuals exhausted their regular payments this week, an increase of 10 from the previous week and a decrease of 26 from a year ago.

Temporary Disability Insurance

Temporary Disability Insurance – 684 initial claims and 6,653 continued claims were processed for Temporary Disability Insurance. The average weekly TDI payment is \$468 per week. Rhode Island is currently paying an average of 10.4 weeks per new claim. To date there have been 20,925 TDI initial claims filed.

Temporary Caregiver Insurance – Of the 684 TDI initial claims, 167 (24.4%) were TCI Claims. This week 317 TCI payments were issued totaling \$171,052. The average weekly TCI payment was \$540. Of the 20,925 TDI claims filed in 2016, 3,878 or 18.5% were TCI claims.

	Initial Claims			Continued Claims	TOTAL - Initial and Continued Claims			
	Total	New	Additional		Current Week	Previous Week	Year Ago	Two Years Ago
Total - All programs*	808	524	284	8,645	9,453	9,292	9,320	10,923
UI Claims	727	457	270	7,523	8,250	8,521	8,678	10,212
Change from:								
Previous Week	-116	-86	-30	-155	-271			
Year Ago	-56	-11	-45	-372	-428			
Two Years Ago	-358	-234	-124	-1,604	-1,962			
Interstate-Liable	33	21	12	390	423	408	399	459
Workshare	48	46	2	732	780	363	243	252
Workshare Equivalency	10	9	1	170	180	113	63	69
UI Exhaustions	-	-	-	167	167	157	193	251
TDI Claims (Includes TCI)	684	519	165	6,653	7,337	8,015	8,860	8,622
Change from:								
Previous Week	-220	-176	-44	-458	-678			
Year Ago	-646	-509	-137	-877	-1,523			

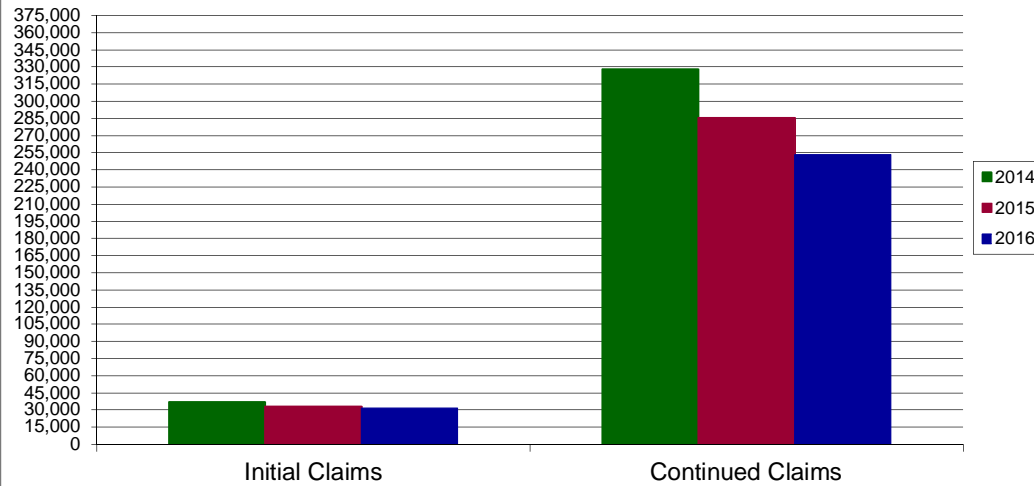
* Includes UI, Workshare & Interstate Liable.

Equal Opportunity Employer / Program / Auxiliary aids and services available upon request to individuals with disabilities / TTY via RI Relay 711.

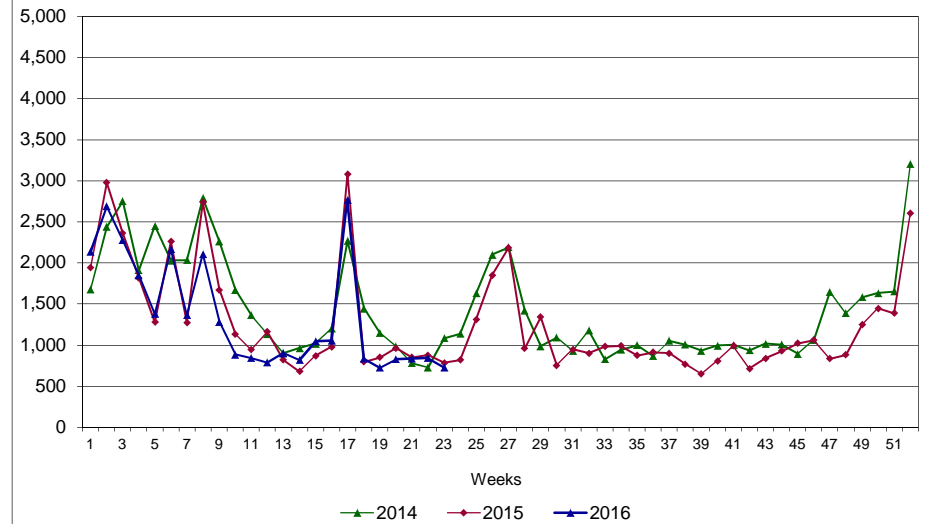
Rhode Island Department of Labor and Training

June 4, 2016

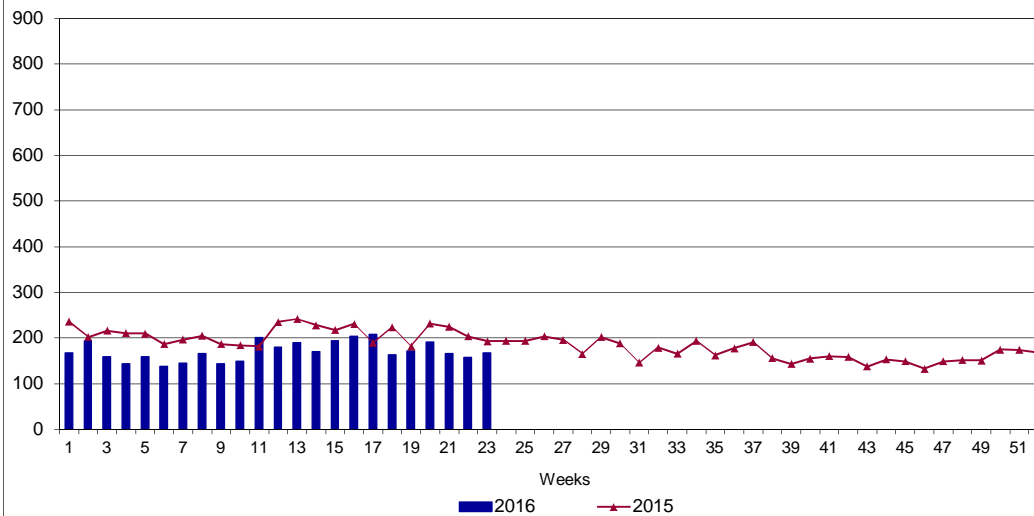
UI Claims Comparison Year to Date



UI Initial Claims 2014 - 2016



UI Exhaustions 2015 - 2016



TDI Claims Comparison Year to Date

