



Rhode Island Department of Labor and Training

Weekly Update of Claims Activity

Week Ending: June 11, 2016

Unemployment Insurance

Initial Claims – 845 initial claims were processed during the week ending 6/11/16, an increase of 118 from the previous week, and an increase of 27 from a year ago. The number of initial claims filed to date is down 5.7 percent from last year and down 16.2 percent from two years ago.

Continued Claims – 7,439 continued claims were processed during the week of 6/11/16, a decrease of 84 from the previous week and a decrease of 448 from a year ago. The number of continued claims filed to date is down 11.3 percent from last year and down 22.7 percent from two years ago.

Workshare – gives employers an alternative to layoffs by allowing employees to work reduced hours and collect a percentage of regular UI benefits to compensate for lost pay. This week, 14 initial claims and 390 continued claims were processed. An estimated 4 layoffs were prevented this week, as a result of Workshare.

Exhaustions – 174 individuals exhausted their regular payments this week, an increase of 7 from the previous week and a decrease of 20 from a year ago.

Temporary Disability Insurance

Temporary Disability Insurance – 835 initial claims and 7,141 continued claims were processed for Temporary Disability Insurance. The average weekly TDI payment is \$472 per week. Rhode Island is currently paying an average of 10.5 weeks per new claim. To date there have been 21,760 TDI initial claims filed.

Temporary Caregiver Insurance – Of the 835 TDI initial claims, 186 (22.3%) were TCI Claims. This week 406 TCI payments were issued totaling \$205,804. The average weekly TCI payment was \$507. Of the 21,760 TDI claims filed in 2016, 4,064 or 18.7% were TCI claims.

	Initial Claims			Continued Claims	TOTAL - Initial and Continued Claims			
	Total	New	Additional		Current Week	Previous Week	Year Ago	Two Years Ago
Total - All programs*	885	608	277	8,220	9,105	9,453	9,473	10,788
UI Claims	845	580	265	7,439	8,284	8,250	8,705	10,192
Change from:								
Previous Week	118	123	-5	-84	34			
Year Ago	27	93	-66	-448	-421			
Two Years Ago	-293	-148	-145	-1,615	-1,908			
Interstate-Liable	26	18	8	391	417	423	387	458
Workshare	14	10	4	390	404	780	381	138
Workshare Equivalency	4	3	1	118	122	180	90	37
UI Exhaustions	-	-	-	174	174	167	194	254
TDI Claims (Includes TCI)	835	632	203	7,141	7,976	7,337	7,323	8,348
Change from:								
Previous Week	151	113	38	488	639			
Year Ago	-91	-97	6	744	653			

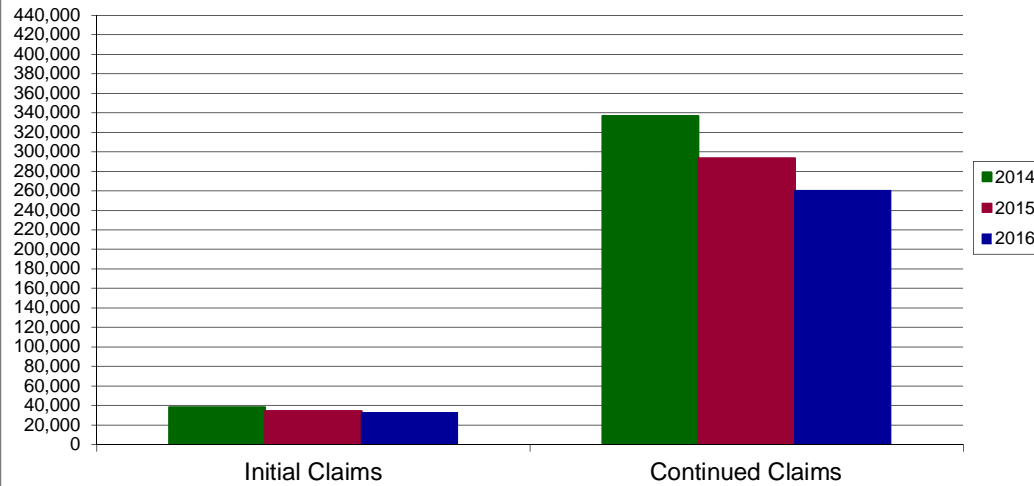
* Includes UI, Workshare & Interstate Liable.

Equal Opportunity Employer / Program / Auxiliary aids and services available upon request to individuals with disabilities / TTY via RI Relay 711.

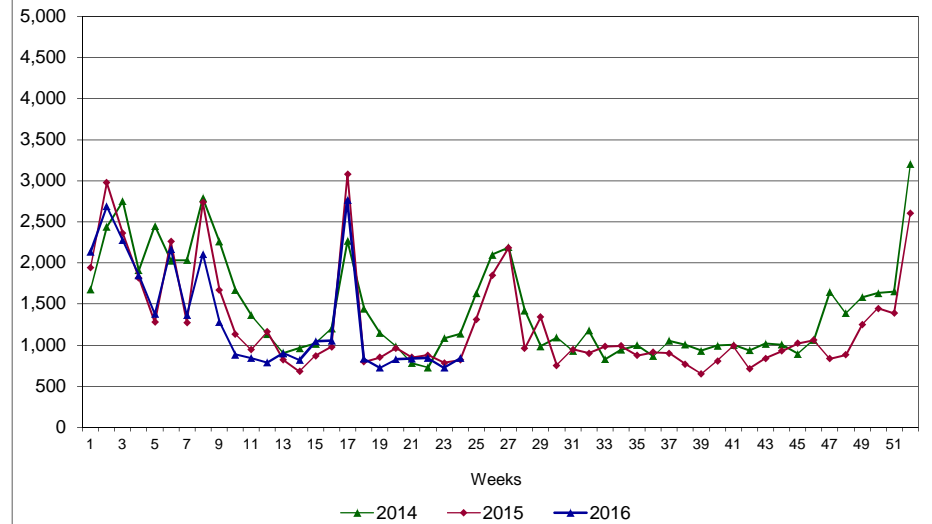
Rhode Island Department of Labor and Training

June 11, 2016

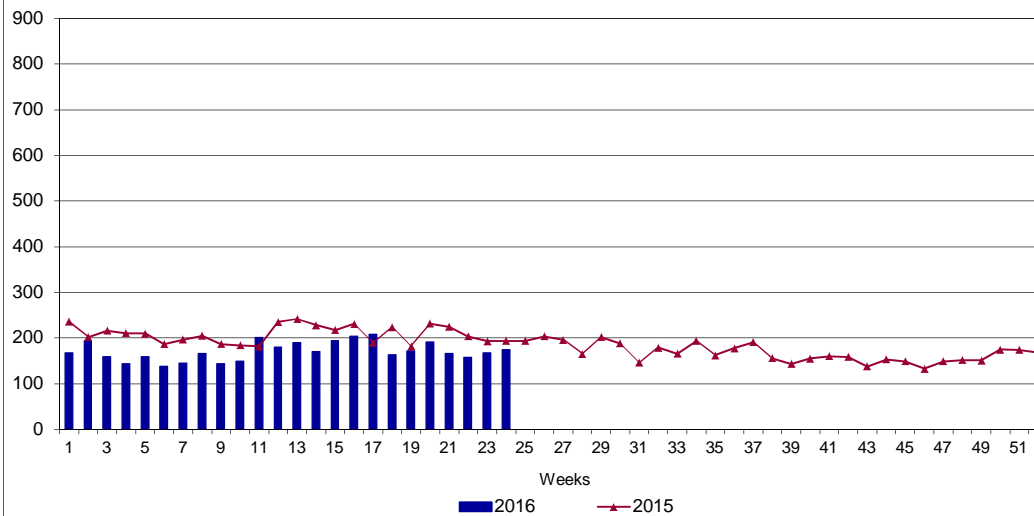
UI Claims Comparison Year to Date



UI Initial Claims 2014 - 2016



UI Exhaustions 2015 - 2016



TDI Claims Comparison Year to Date

