



Rhode Island Department of Labor and Training

Weekly Update of Claims Activity

Week Ending: July 16, 2016

Unemployment Insurance

Initial Claims – 1,123 initial claims were processed during the week ending 7/16/16, a decrease of 6 from the previous week, and a decrease of 219 from a year ago. The number of initial claims filed to date is down 5.4 percent from last year and down 15.4 percent from two years ago.

Continued Claims – 10,035 continued claims were processed during the week of 7/16/16, an increase of 696 from the previous week and a decrease of 32 from a year ago. The number of continued claims filed to date is down 10.3 percent from last year and down 22.1 percent from two years ago.

Workshare – gives employers an alternative to layoffs by allowing employees to work reduced hours and collect a percentage of regular UI benefits to compensate for lost pay. This week, 31 initial claims and 281 continued claims were processed. An estimated 7 layoffs were prevented this week, as a result of Workshare.

Exhaustions – 191 individuals exhausted their regular payments this week, an increase 18 from the previous week and a decrease of 11 from a year ago.

Temporary Disability Insurance

Temporary Disability Insurance – 898 initial claims and 7,122 continued claims were processed for Temporary Disability Insurance. The average weekly TDI payment is \$467 per week. Rhode Island is currently paying an average of 10.5 weeks per new claim. To date there have been 26,675 TDI initial claims filed.

Temporary Caregiver Insurance – Of the 898 TDI initial claims, 222 (24.7%) were TCI Claims. This week 473 TCI payments were issued totaling \$258,010. The average weekly TCI payment was \$545. Of the 26,675 TDI claims filed in 2016, 5,043 or 18.9% were TCI claims.

	Initial Claims			Continued Claims	TOTAL - Initial and Continued Claims			
	Total	New	Additional		Current Week	Previous Week	Year Ago	Two Years Ago
Total - All programs*	1,180	780	400	10,741	11,921	11,210	11,928	13,327
UI Claims	1,123	738	385	10,035	11,158	10,468	11,409	12,561
Change from:								
Previous Week	-6	71	-77	696	690			
Year Ago	-219	-179	-40	-32	-251			
Two Years Ago	135	162	-27	-1,538	-1,403			
Interstate-Liable	26	17	9	425	451	425	365	484
Workshare	31	25	6	281	312	317	154	282
Workshare Equivalency	7	5	2	73	80	96	39	85
UI Exhaustions	-	-	-	191	191	173	202	267
TDI Claims (Includes TCI)	898	672	226	7,122	8,020	7,416	7,984	8,621
Change from:								
Previous Week	271	185	86	333	604			
Year Ago	-150	-119	-31	186	36			

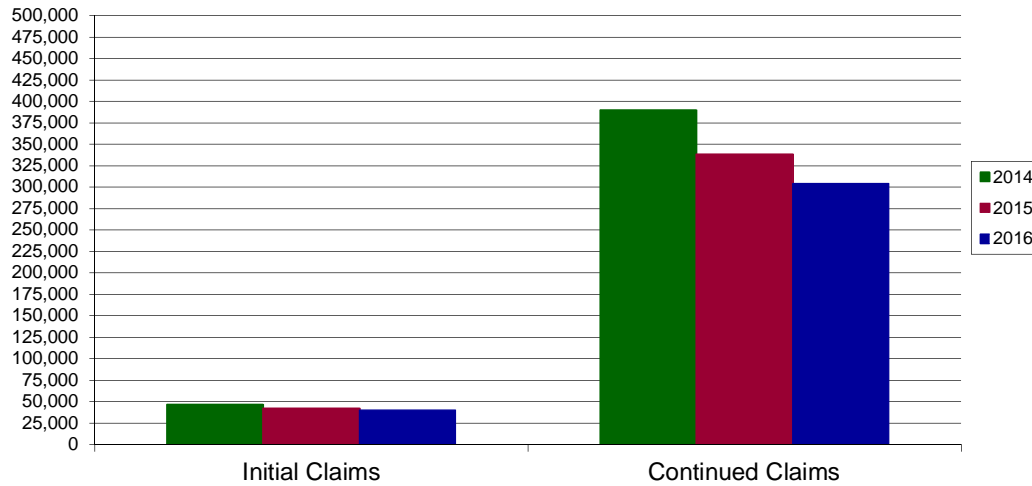
* Includes UI, Workshare & Interstate Liable.

Equal Opportunity Employer / Program / Auxiliary aids and services available upon request to individuals with disabilities / TTY via RI Relay 711.

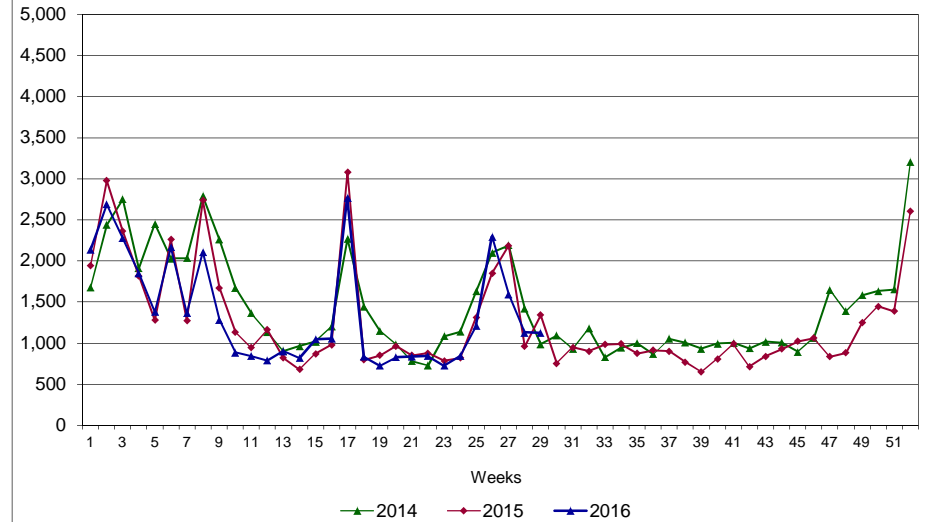
Rhode Island Department of Labor and Training

July 16, 2016

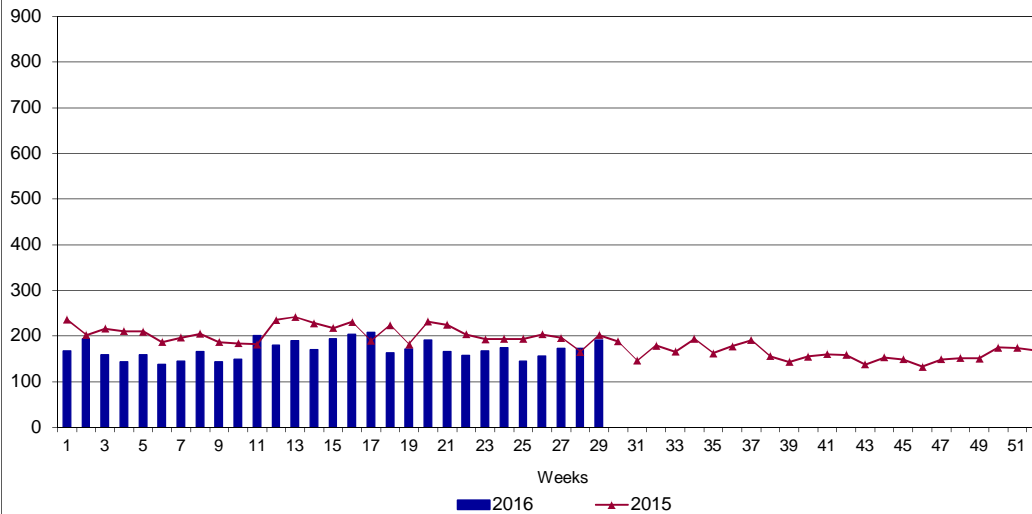
UI Claims Comparison Year to Date



UI Initial Claims 2014 - 2016



UI Exhaustions 2015 - 2016



TDI Claims Comparison Year to Date

