



Rhode Island Department of Labor and Training

Weekly Update of Claims Activity

Week Ending: August 20, 2016

Unemployment Insurance

Initial Claims – 1,072 initial claims were processed during the week ending 8/20/16, an increase of 309 from the previous week, and an increase of 79 from a year ago. The number of initial claims filed to date is down 5.3 percent from last year and down 15.1 percent from two years ago.

Continued Claims – 9,425 continued claims were processed during the week of 8/20/16, an increase of 161 from the previous week and a decrease of 591 from a year ago. The number of continued claims filed to date is down 9.4 percent from last year and down 21.2 percent from two years ago.

Workshare – gives employers an alternative to layoffs by allowing employees to work reduced hours and collect a percentage of regular UI benefits to compensate for lost pay. This week, 6 initial claims and 440 continued claims were processed. An estimated 2 layoffs were prevented this week, as a result of Workshare.

Exhaustions – 158 individuals exhausted their regular payments this week, a decrease 20 from the previous week and a decrease of 36 from a year ago.

Temporary Disability Insurance

Temporary Disability Insurance – 782 initial claims and 8,554 continued claims were processed for Temporary Disability Insurance. The average weekly TDI payment is \$484 per week. Rhode Island is currently paying an average of 10.4 weeks per new claim. To date there have been 31,582 TDI initial claims filed.

Temporary Caregiver Insurance – Of the 782 TDI initial claims, 229 (29.3%) were TCI Claims. This week 478 TCI payments were issued totaling \$265,057. The average weekly TCI payment was \$555. Of the 31,582 TDI claims filed in 2016, 6,026 or 19.1% were TCI claims.

	Initial Claims			Continued Claims	TOTAL - Initial and Continued Claims			
	Total	New	Additional		Current Week	Previous Week	Year Ago	Two Years Ago
Total - All programs*	1,114	696	418	10,259	11,373	10,721	11,703	13,063
UI Claims	1,072	670	402	9,425	10,497	10,027	11,009	12,086
Change from:								
Previous Week	309	276	33	161	470			
Year Ago	79	106	-27	-591	-512			
Two Years Ago	126	117	9	-1,715	-1,589			
Interstate-Liable	36	23	13	394	430	400	419	567
Workshare	6	3	3	440	446	294	275	410
Workshare Equivalency	2	1	1	108	110	69	65	95
UI Exhaustions	-	.	-	158	158	178	194	226
TDI Claims (Includes TCI)	782	593	189	8,554	9,336	8,547	9,661	8,930
Change from:								
Previous Week	-423	-353	-70	1,212	789			
Year Ago	-336	-271	-65	11	-325			

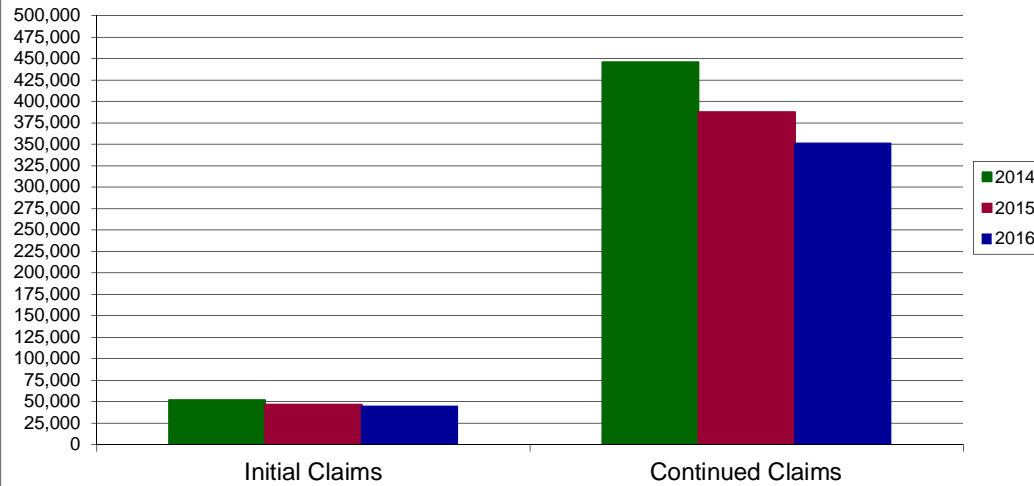
* Includes UI, Workshare & Interstate Liable.

Equal Opportunity Employer / Program / Auxiliary aids and services available upon request to individuals with disabilities / TTY via RI Relay 71

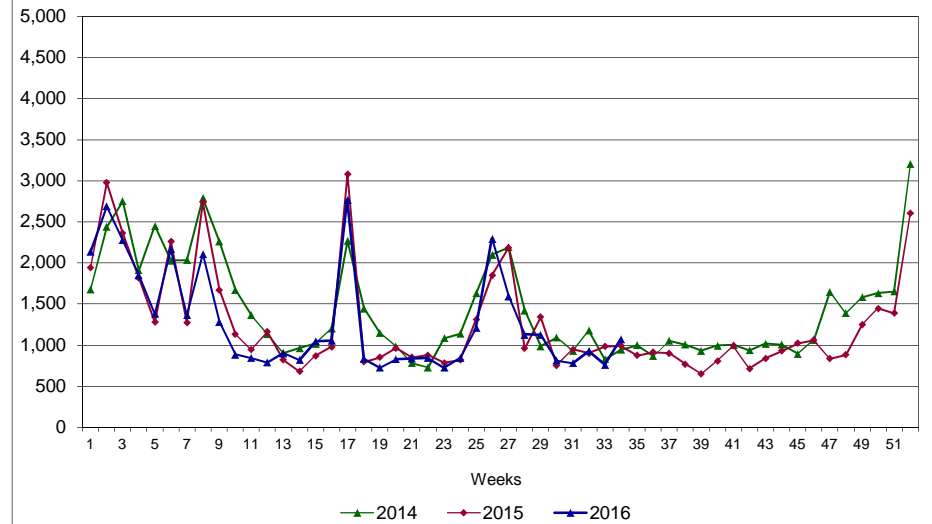
Rhode Island Department of Labor and Training

August 20, 2016

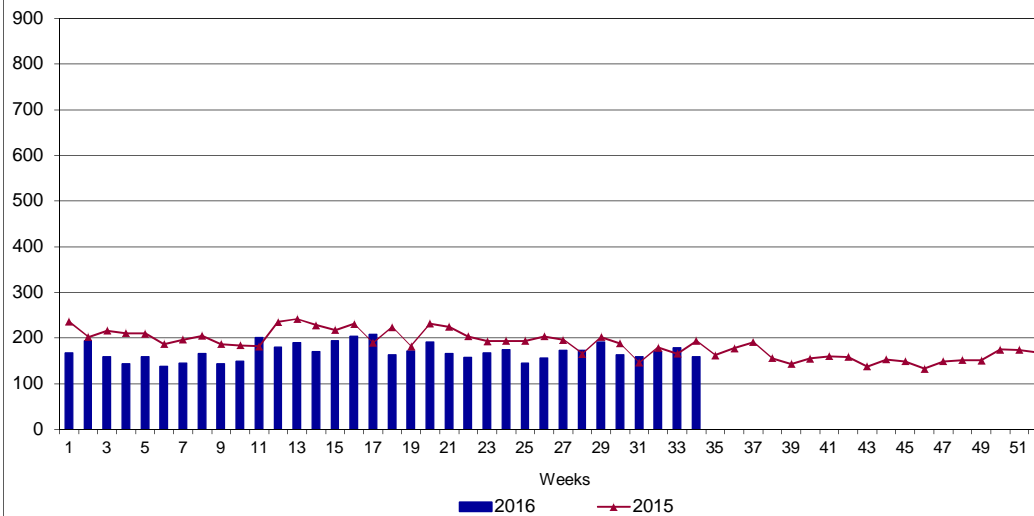
UI Claims Comparison Year to Date



UI Initial Claims 2014 - 2016



UI Exhaustions 2015 - 2016



TDI Claims Comparison Year to Date

