



Rhode Island Department of Labor and Training

Weekly Update of Claims Activity

Week Ending: September 3, 2016

Unemployment Insurance

Initial Claims – 771 initial claims were processed during the week ending 9/3/16, a decrease of 4 from the previous week, and a decrease of 142 from a year ago. The number of initial claims filed to date is down 5.6 percent from last year and down 15.2 percent from two years ago.

Continued Claims – 9,246 continued claims were processed during the week of 9/3/16, a decrease of 209 from the previous week and an increase of 91 from a year ago. The number of continued claims filed to date is down 9.1 percent from last year and down 20.6 percent from two years ago.

Workshare – gives employers an alternative to layoffs by allowing employees to work reduced hours and collect a percentage of regular UI benefits to compensate for lost pay. This week, 7 initial claims and 386 continued claims were processed. An estimated 1 layoff was prevented this week, as a result of Workshare.

Exhaustions – 133 individuals exhausted their regular payments this week, a decrease 19 from the previous week and a decrease of 45 from a year ago.

Temporary Disability Insurance

Temporary Disability Insurance – 927 initial claims and 7,893 continued claims were processed for Temporary Disability Insurance. The average weekly TDI payment is \$486 per week. Rhode Island is currently paying an average of 10.4 weeks per new claim. To date there have been 33,378 TDI initial claims filed.

Temporary Caregiver Insurance – Of the 927 TDI initial claims, 256 (27.6%) were TCI Claims. This week 504 TCI payments were issued totaling \$288,837. The average weekly TCI payment was \$573. Of the 33,378 TDI claims filed in 2016, 6,251 or 19.5% were TCI claims.

	Initial Claims			Continued Claims	TOTAL - Initial and Continued Claims			
	Total	New	Additional		Current Week	Previous Week	Year Ago	Two Years Ago
Total - All programs*	811	497	314	10,010	10,821	10,958	10,741	10,847
UI Claims	771	471	300	9,246	10,017	10,230	10,068	9,884
Change from:								
Previous Week	-4	2	-6	-209	-213			
Year Ago	-142	-129	-13	91	-51			
Two Years Ago	-94	-105	11	227	133			
Interstate-Liable	33	20	13	378	411	419	438	483
Workshare	7	6	1	386	393	309	235	480
Workshare Equivalency	1	1	0	97	98	75	65	123
UI Exhaustions	-	.	-	133	133	152	178	201
TDI Claims (Includes TCI)	927	698	229	7,893	8,820	8,563	9,083	8,554
Change from:								
Previous Week	38	17	21	219	257			
Year Ago	25	-1	26	-288	-263			

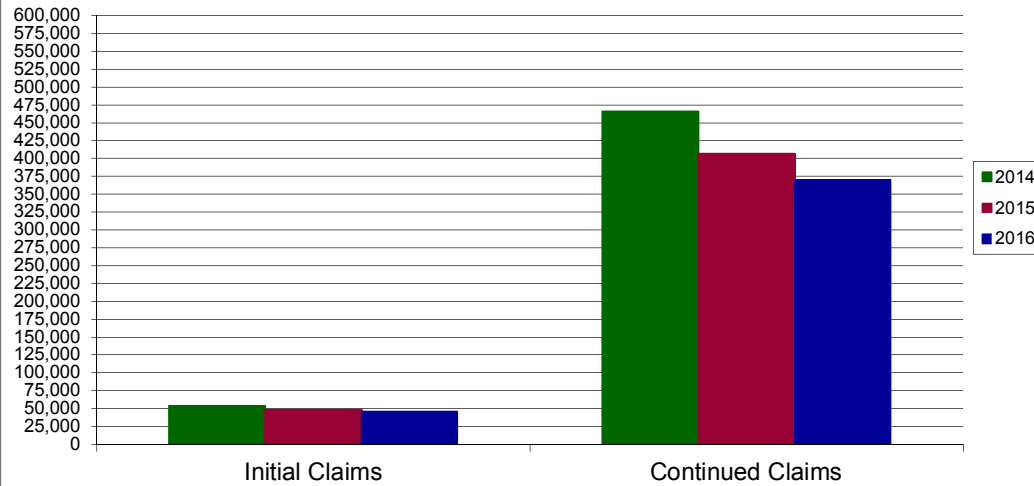
* Includes UI, Workshare & Interstate Liable.

Equal Opportunity Employer / Program / Auxiliary aids and services available upon request to individuals with disabilities / TTY via RI Relay 711.

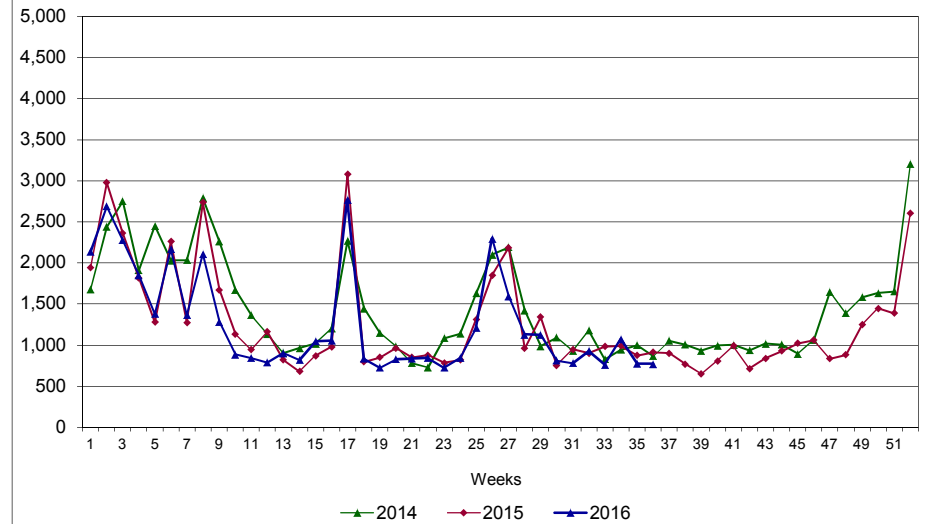
Rhode Island Department of Labor and Training

September 3, 2016

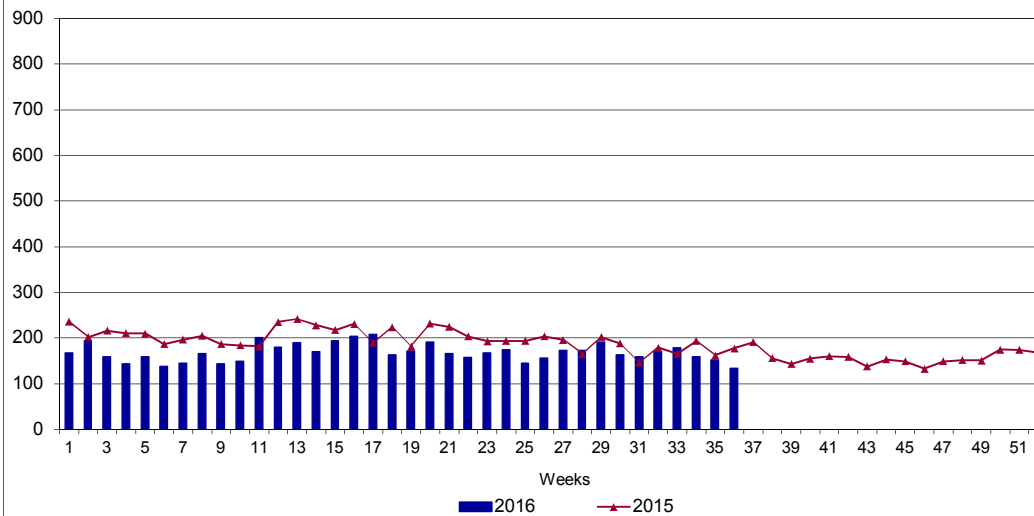
UI Claims Comparison Year to Date



UI Initial Claims 2014 - 2016



UI Exhaustions 2015 - 2016



TDI Claims Comparison Year to Date

