



## Rhode Island Department of Labor and Training

# *Weekly Update of Claims Activity*

*Week Ending: September 10, 2016*

### *Unemployment Insurance*

**Initial Claims** – 630 initial claims were processed during the week ending 9/10/16, a decrease of 141 from the previous week, and a decrease of 270 from a year ago. The number of initial claims filed to date is down 6.1 percent from last year and down 15.6 percent from two years ago.

**Continued Claims** – 7,432 continued claims were processed during the week of 9/10/16, a decrease of 1,814 from the previous week and an increase of 267 from a year ago. The number of continued claims filed to date is down 8.9 percent from last year and down 20.4 percent from two years ago.

**Workshare** – gives employers an alternative to layoffs by allowing employees to work reduced hours and collect a percentage of regular UI benefits to compensate for lost pay. This week, 6 initial claims and 302 continued claims were processed. An estimated 2 layoffs were prevented this week, as a result of Workshare.

**Exhaustions** – 153 individuals exhausted their regular payments this week, an increase 20 from the previous week and a decrease of 38 from a year ago.

### *Temporary Disability Insurance*

**Temporary Disability Insurance** – 854 initial claims and 7,119 continued claims were processed for Temporary Disability Insurance. The average weekly TDI payment is \$488 per week. Rhode Island is currently paying an average of 10.4 weeks per new claim. To date there have been 34,232 TDI initial claims filed.

**Temporary Caregiver Insurance** – Of the 854 TDI initial claims, 175 (20.5%) were TCI Claims. This week 359 TCI payments were issued totaling \$196,717. The average weekly TCI payment was \$548. Of the 34,232 TDI claims filed in 2016, 6,682 or 19.5% were TCI claims.

	Initial Claims			Continued Claims	TOTAL - Initial and Continued Claims			
	Total	New	Additional		Current Week	Previous Week	Year Ago	Two Years Ago
<b>Total - All programs*</b>	659	405	254	8,133	8,792	10,821	8,671	10,309
<b>UI Claims</b>	630	385	245	7,432	8,062	10,017	8,065	9,379
Change from:								
Previous Week	-141	-86	-55	-1,814	-1,955			
Year Ago	-270	-159	-111	267	-3			
Two Years Ago	-422	-287	-135	-895	-1,317			
<b>Interstate-Liable</b>	23	15	8	399	422	411	420	477
<b>Workshare</b>	6	5	1	302	308	393	186	453
<b>Workshare Equivalency</b>	2	2	0	80	82	98	51	122
<b>UI Exhaustions</b>	-	.	-	153	153	133	191	227
<b>TDI Claims (Includes TCI)</b>	854	656	198	7,119	7,973	8,820	7,427	8,978
Change from:								
Previous Week	-73	-42	-31	-774	-847			
Year Ago	-18	-24	6	564	546			

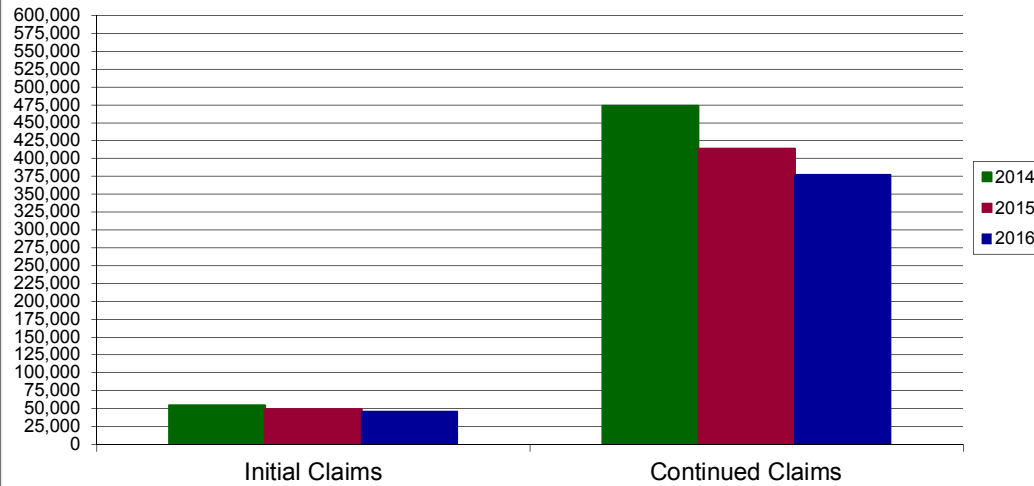
\* Includes UI, Workshare & Interstate Liable.

Equal Opportunity Employer / Program / Auxiliary aids and services available upon request to individuals with disabilities / TTY via RI Relay 711.

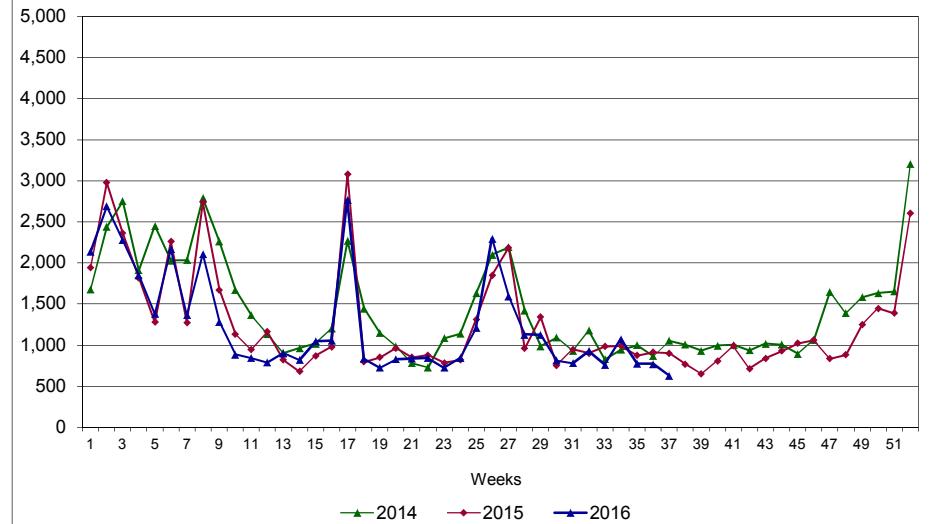
# Rhode Island Department of Labor and Training

## September 10, 2016

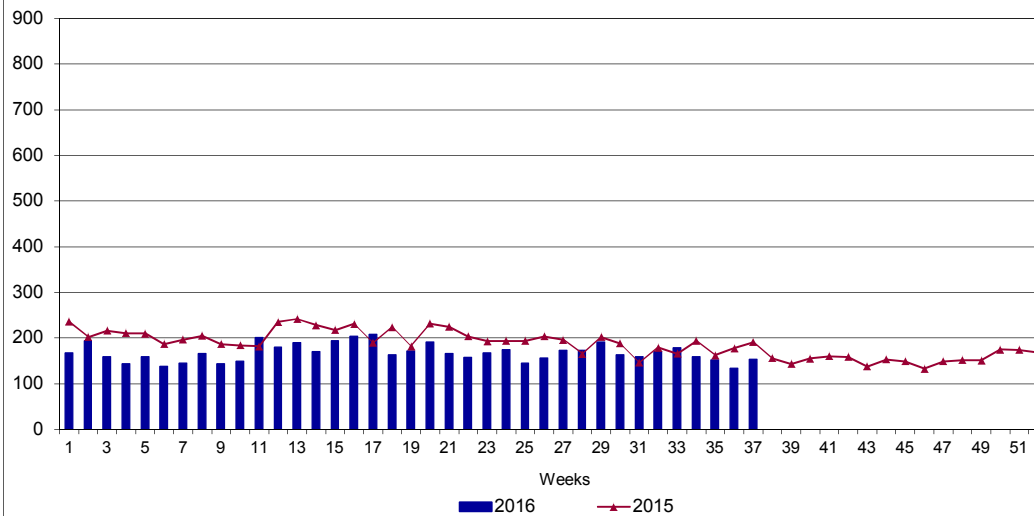
### UI Claims Comparison Year to Date



### UI Initial Claims 2014 - 2016



### UI Exhaustions 2015 - 2016



### TDI Claims Comparison Year to Date

