



Rhode Island Department of Labor and Training

Weekly Update of Claims Activity

Week Ending: September 17, 2016

Unemployment Insurance

Initial Claims – 780 initial claims were processed during the week ending 9/17/16, an increase of 150 from the previous week, and an increase of 11 from a year ago. The number of initial claims filed to date is down 6.0 percent from last year and down 15.8 percent from two years ago.

Continued Claims – 6,677 continued claims were processed during the week of 9/17/16, a decrease of 755 from the previous week and a decrease of 252 from a year ago. The number of continued claims filed to date is down 8.8 percent from last year and down 20.3 percent from two years ago.

Workshare – gives employers an alternative to layoffs by allowing employees to work reduced hours and collect a percentage of regular UI benefits to compensate for lost pay. This week, 40 initial claims and 260 continued claims were processed. An estimated 8 layoffs were prevented this week, as a result of Workshare.

Exhaustions – 159 individuals exhausted their regular payments this week, an increase 6 from the previous week and an increase of 3 from a year ago.

Temporary Disability Insurance

Temporary Disability Insurance – 952 initial claims and 7,502 continued claims were processed for Temporary Disability Insurance. The average weekly TDI payment is \$481 per week. Rhode Island is currently paying an average of 10.4 weeks per new claim. To date there have been 35,184 TDI initial claims filed.

Temporary Caregiver Insurance – Of the 952 TDI initial claims, 201 (21.1%) were TCI Claims. This week 365 TCI payments were issued totaling \$207,558. The average weekly TCI payment was \$569. Of the 35,184 TDI claims filed in 2016, 6,883 or 19.6% were TCI claims.

	Initial Claims			Continued Claims	TOTAL - Initial and Continued Claims			
	Total	New	Additional		Current Week	Previous Week	Year Ago	Two Years Ago
Total - All programs*	850	563	287	7,344	8,194	8,792	8,331	9,840
UI Claims	780	504	276	6,677	7,457	8,062	7,698	9,081
Change from:								
Previous Week	150	119	31	-755	-605			
Year Ago	11	-9	20	-252	-241			
Two Years Ago	-228	-167	-61	-1,396	-1,624			
Interstate-Liable	30	20	10	407	437	422	422	488
Workshare	40	39	1	260	300	308	211	271
Workshare Equivalency	8	8	0	71	79	82	57	73
UI Exhaustions	-	.	-	159	159	153	156	206
TDI Claims (Includes TCI)	952	728	224	7,502	8,454	7,973	9,153	9,097
Change from:								
Previous Week	98	72	26	383	481			
Year Ago	4	-13	17	-703	-699			

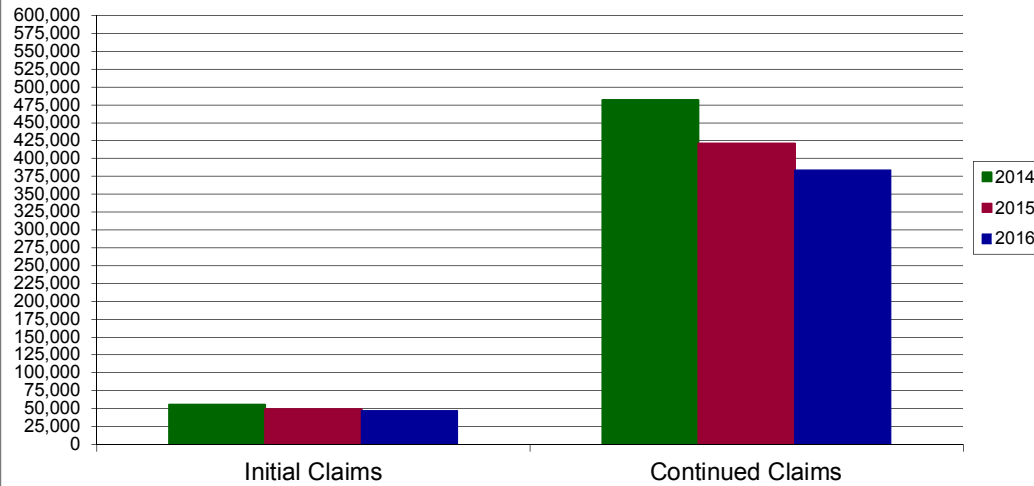
* Includes UI, Workshare & Interstate Liable.

Equal Opportunity Employer / Program / Auxiliary aids and services available upon request to individuals with disabilities / TTY via RI Relay 711.

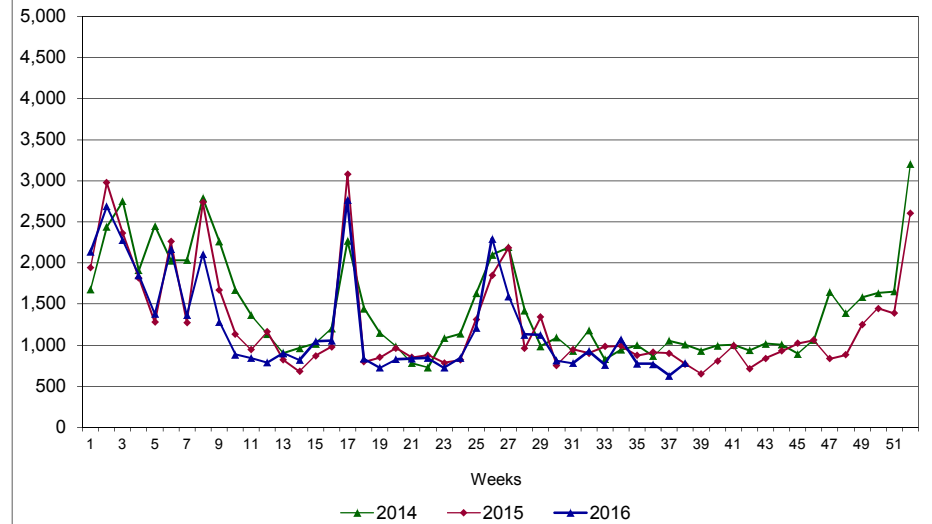
Rhode Island Department of Labor and Training

September 17, 2016

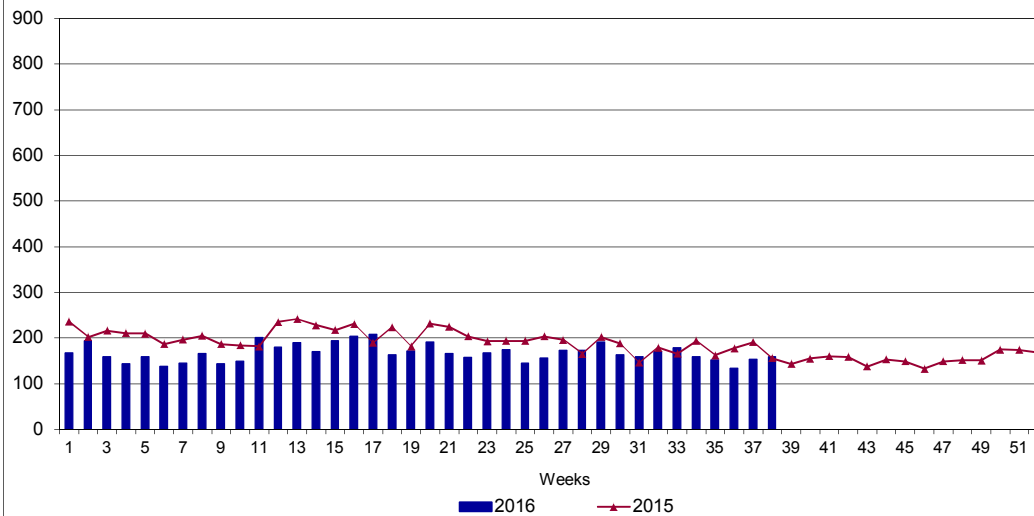
UI Claims Comparison Year to Date



UI Initial Claims 2014 - 2016



UI Exhaustions 2015 - 2016



TDI Claims Comparison Year to Date

