



## Rhode Island Department of Labor and Training

# *Weekly Update of Claims Activity*

*Week Ending: December 24, 2011*

### **Unemployment Insurance**

**Initial Claims** – 2,839 initial claims were processed during the week ending 12/24/11, an increase of 737 from the previous week, and a decrease of 703 from a year ago. The number of initial claims filed to date is down 3.8 percent from last year and down 15.2 percent from two years ago.

**Continued Claims** – 15,311 continued claims were processed during the week of 12/24/11, an increase of 708 from the previous week and a decrease of 1,793 from a year ago. The number of continued claims filed to date is down 9.1 percent from a year ago and down 26.2 percent from two years ago.

**Workshare** – gives employers an alternative to layoffs by allowing employees to work reduced hours and collect a percentage of regular UI benefits to compensate for lost pay. This week, 83 initial claims and 1,175 continued claims were processed. An estimated 24 layoffs were prevented this week, as a result of Workshare.

**Emergency Unemployment Compensation 08** – EUC08, which became effective July 6, 2008, provides up to 53 weeks of federally funded benefits to eligible individuals who exhausted their UI claims. This week there were 382 new EUC08 claims processed and 12,615 continued claims processed (5,094 under tier I, 3,224 under tier II, 2,883 under tier III and 1,414 under tier IV).

**Extended Benefits** – are payable to individuals who have exhausted UI or EUC08 claims. This week, 92 new EB claims and 1,854 continued EB claims were processed.

**Exhaustions** – 432 individuals exhausted their regular payments this week, an increase of 3 from the previous week and a decrease of 89 from a year ago. There were 222 individuals that exhausted EUC08 and 48 individuals that exhausted EB.

### **Temporary Disability Insurance**

**Temporary Disability Insurance** – 551 initial claims and 7,514 continued claims were processed for Temporary Disability Insurance. The average weekly TDI payment is \$445 per week. Rhode Island is currently paying an average of 10.7 weeks per new claim.

	<u>Initial Claims</u>			<u>Continued Claims</u>	<u>TOTAL - Initial and Continued Claims</u>			
	<u>Total</u>	<u>New</u>	<u>Additional</u>		<u>Current Week</u>	<u>Previous Week</u>	<u>Year Ago</u>	<u>Two Years Ago</u>
<b>Total - All programs*</b>	3,710	1,941	1,769	31,525	35,235	33,994	41,443	45,060
<b>UI Claims</b>	2,839	1,387	1,452	15,311	18,150	16,705	20,646	19,781
Change from:								
Previous Week	737	167	570	708	1,445			
Year Ago	-703	-345	-358	-1,793	-2,496			
Two Years Ago	552	372	180	-2,183	-1,631			
<b>EUC08 Claims</b>	644	382	262	12,615	13,259	13,207	14,217	19,798
<b>Extended Benefits</b>	109	92	17	1,854	1,963	1,942	3,969	2,022
<b>Interstate-Liable</b>	35	23	12	570	605	624	693	711
<b>Workshare</b>	83	57	26	1,175	1,258	1,516	1,918	2,748
<b>Workshare Equivalency</b>	24	17	7	309	333	427	503	634
<b>UI Exhaustions</b>	-	-	-	432	432	429	521	589
<b>EUC08 Exhaustions</b>	-	-	-	222	222	216	320	0
<b>EB Exhaustions</b>	-	-	-	48	48	62	90	157
<b>TDI Claims</b>	551	449	102	7,514	8,065	7,718	8,800	6,892
Change from:								
Previous Week	-16	-18	2	363	347			
Year Ago	-154	-124	-30	-581	-735			

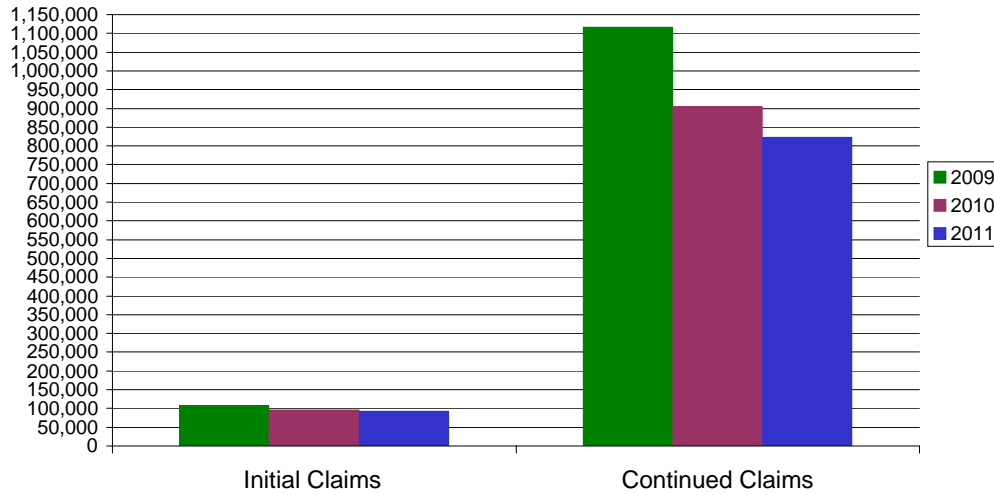
\* Includes UI, EUC08, EB, Workshare & Interstate Liable.

Equal Opportunity Employer / Program / Auxiliary aids and services available upon request to individuals with disabilities / TTY via RI Relay 711.

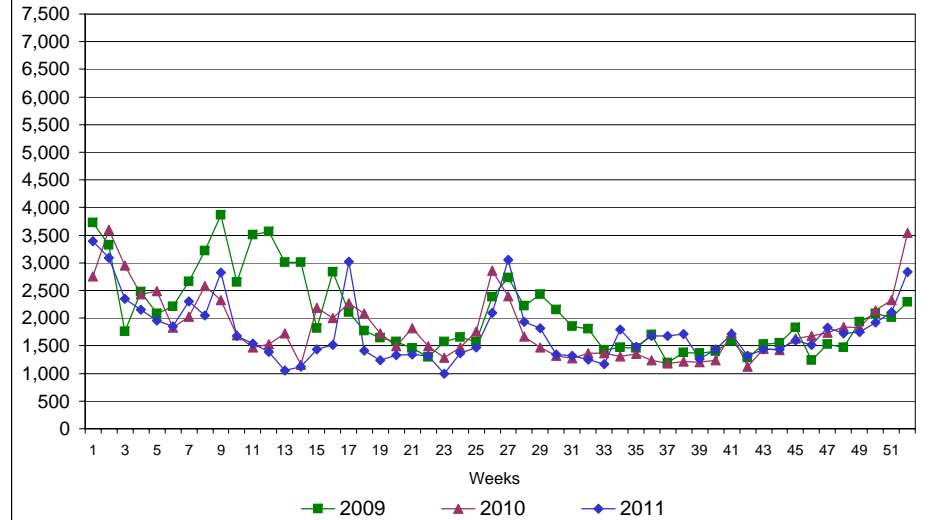
# Rhode Island Department of Labor and Training

## December 24, 2011

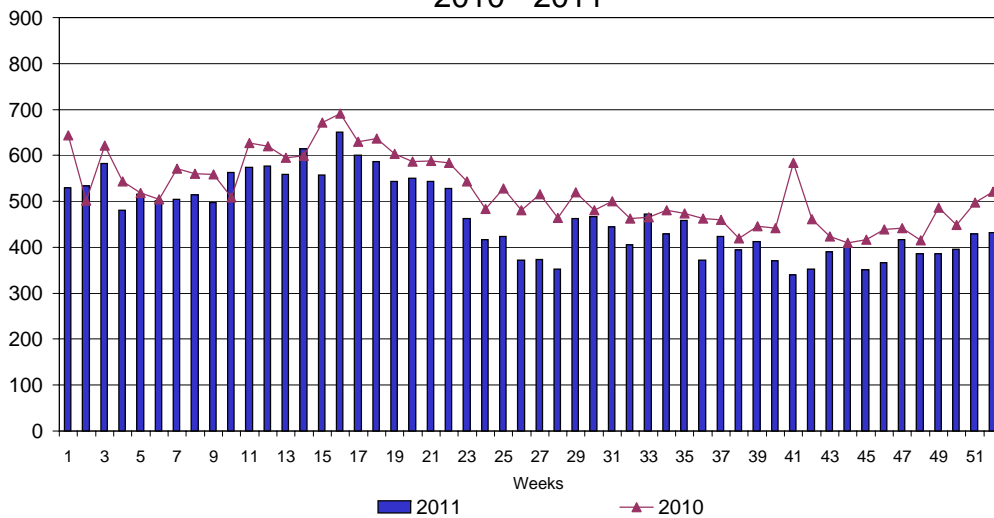
### UI Claims Comparison Year to Date



### UI Initial Claims 2009 - 2011



### UI Exhaustions 2010 - 2011



### TDI Claims Comparison Year to Date

