



## Rhode Island Department of Labor and Training

# *Weekly Update of Claims Activity*

*Week Ending: December 21, 2013*

### *Unemployment Insurance*

**Initial Claims** – 1,726 initial claims were processed during the week ending 12/21/13, an increase of 196 from the previous week, and a decrease of 515 from a year ago. The number of initial claims filed to date is down 10.0 percent from last year and down 13.9 percent from two years ago.

**Continued Claims** – 11,599 continued claims were processed during the week of 12/21/13, an increase of 436 from the previous week and a decrease of 1,965 from a year ago. The number of continued claims filed to date is down 11.6 percent from last year and down 20.6 percent from two years ago.

**Workshare** – gives employers an alternative to layoffs by allowing employees to work reduced hours and collect a percentage of regular UI benefits to compensate for lost pay. This week, 2 initial claims and 323 continued claims were processed. An estimated 1 layoff was prevented this week, as a result of Workshare.

**Emergency Unemployment Compensation 08** – EUC08, which became effective July 6, 2008, provides up to 53 weeks of federally funded benefits to eligible individuals who exhausted their UI claims. This week there were 248 new EUC08 claims processed and 5,230 continued claims processed (2,142 under tier I, 1,589 under tier II, 874 under tier III and 625 under tier IV).

**Exhaustions** – 292 individuals exhausted their regular payments this week, an increase of 8 from the previous week. There were 9 individuals that exhausted EUC08.

### *Temporary Disability Insurance*

**Temporary Disability Insurance** – 989 initial claims and 6,513 continued claims were processed for Temporary Disability Insurance. The average weekly TDI payment is \$447 per week. Rhode Island is currently paying an average of 11.0 weeks per new claim.

	Initial Claims			Continued Claims	TOTAL - Initial and Continued Claims			
	Total	New	Additional		Current Week	Previous Week	Year Ago	Two Years Ago
<b>Total - All programs*</b>	2,203	1,103	1,100	17,776	19,979	18,934	26,109	33,272
<b>UI Claims</b>	1,726	840	886	11,599	13,325	12,693	15,805	18,150
Change from:								
Previous Week	196	15	181	436	632			
Year Ago	-515	-464	-51	-1,965	-2,480			
Two Years Ago	-1,113	-547	-566	-3,712	-4,825			
<b>EUC08 Claims</b>	442	248	194	5,230	5,672	5,101	9,316	13,259
<b>Interstate-Liable</b>	33	15	18	624	657	681	603	605
<b>Workshare</b>	2	0	2	323	325	459	385	1,258
<b>Workshare Equivalency</b>	1	0	1	77	78	126	94	333
<b>UI Exhaustions</b>	-	-	-	292	292	284	356	432
<b>EUC08 Exhaustions</b>	-	-	-	9	9	5	122	222
<b>TDI Claims</b>	989	832	157	6,513	7,502	8,123	7,940	8,065
Change from:								
Previous Week	49	58	-9	-670	-621			
Year Ago	386	329	57	-824	-438			

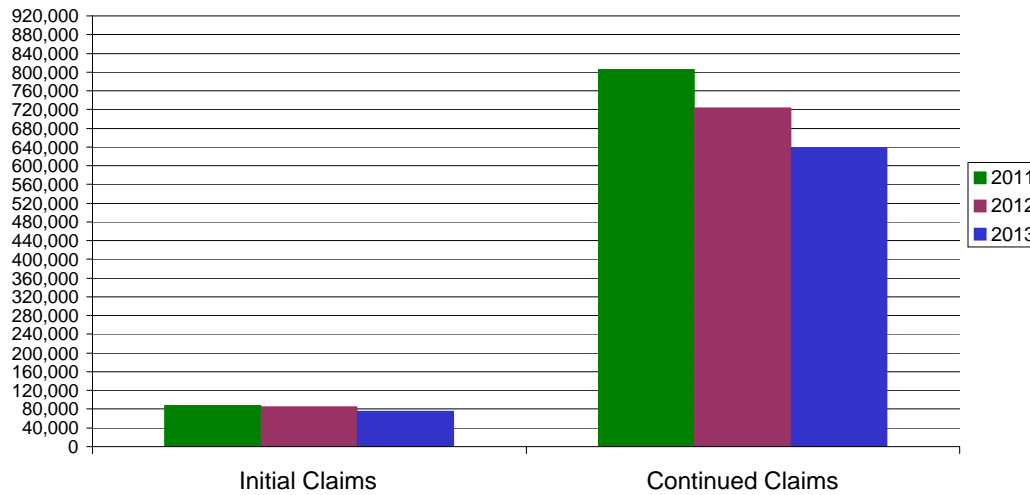
\* Includes UI, EUC08, Workshare & Interstate Liable.

Equal Opportunity Employer / Program / Auxiliary aids and services available upon request to individuals with disabilities / TTY via RI Relay 711.

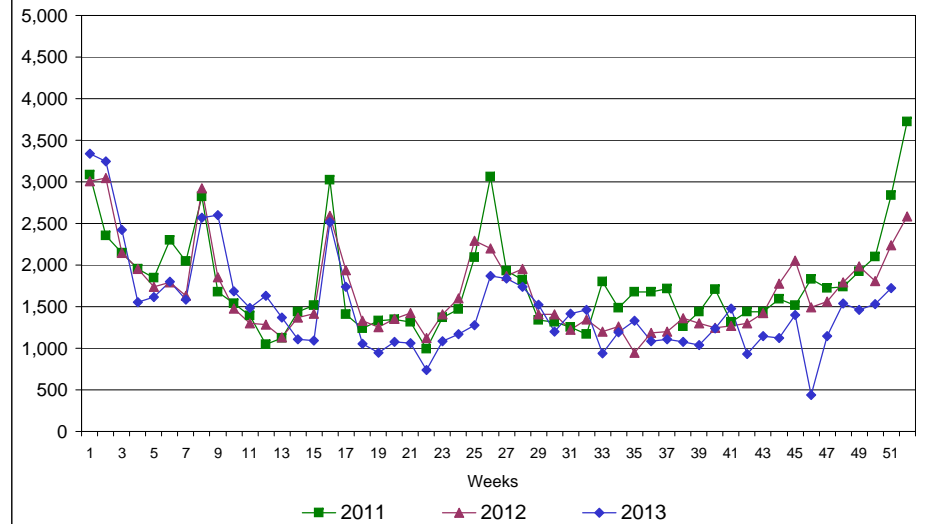
# Rhode Island Department of Labor and Training

## December 21, 2013

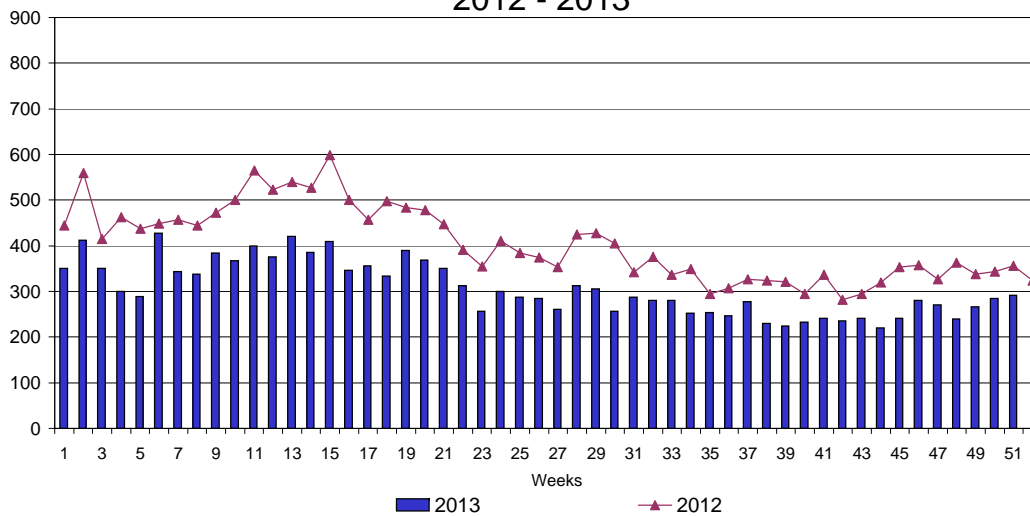
### UI Claims Comparison Year to Date



### UI Initial Claims 2011 - 2013



### UI Exhaustions 2012 - 2013



### TDI Claims Comparison Year to Date

