



Rhode Island Department of Labor and Training

Weekly Update of Claims Activity

Week Ending: December 17, 2011

Unemployment Insurance

Initial Claims – 2,102 initial claims were processed during the week ending 12/17/11, an increase of 181 from the previous week, and a decrease of 221 from a year ago. The number of initial claims filed to date is down 3.2 percent from last year and down 16.0 percent from two years ago.

Continued Claims – 14,603 continued claims were processed during the week of 12/17/11, an increase of 485 from the previous week and a decrease of 1,177 from a year ago. The number of continued claims filed to date is down 9.1 percent from a year ago and down 26.4 percent from two years ago.

Workshare – gives employers an alternative to layoffs by allowing employees to work reduced hours and collect a percentage of regular UI benefits to compensate for lost pay. This week, 158 initial claims and 1,358 continued claims were processed. An estimated 52 layoffs were prevented this week, as a result of Workshare.

Emergency Unemployment Compensation 08 – EUC08, which became effective July 6, 2008, provides up to 53 weeks of federally funded benefits to eligible individuals who exhausted their UI claims. This week there were 385 new EUC08 claims processed and 12,573 continued claims processed (5,084 under tier I, 3,261 under tier II, 2,904 under tier III and 1,324 under tier IV).

Extended Benefits – are payable to individuals who have exhausted UI or EUC08 claims. This week, 84 new EB claims and 1,849 continued EB claims were processed.

Exhaustions – 429 individuals exhausted their regular payments this week, an increase of 33 from the previous week and a decrease of 69 from a year ago. There were 216 individuals that exhausted EUC08 and 62 individuals that exhausted EB.

Temporary Disability Insurance

Temporary Disability Insurance – 567 initial claims and 7,151 continued claims were processed for Temporary Disability Insurance. The average weekly TDI payment is \$445 per week. Rhode Island is currently paying an average of 10.6 weeks per new claim.

	Initial Claims			Continued Claims	TOTAL - Initial and Continued Claims			
	Total	New	Additional		Current Week	Previous Week	Year Ago	Two Years Ago
Total - All programs*	3,027	1,748	1,279	30,967	33,994	32,829	39,057	46,739
UI Claims	2,102	1,220	882	14,603	16,705	16,039	18,103	20,034
Change from:								
Previous Week	181	113	68	485	666			
Year Ago	-221	-116	-105	-1,177	-1,398			
Two Years Ago	91	174	-83	-3,420	-3,329			
EUC08 Claims	634	385	249	12,573	13,207	13,433	14,799	20,068
Extended Benefits	93	84	9	1,849	1,942	1,975	4,031	2,330
Interstate-Liable	40	19	21	584	624	614	667	743
Workshare	158	40	118	1,358	1,516	768	1,457	3,564
Workshare Equivalency	52	11	41	375	427	183	377	804
UI Exhaustions	-	-	-	429	429	396	498	517
EUC08 Exhaustions	-	-	-	216	216	230	352	0
EB Exhaustions	-	-	-	62	62	60	113	178
TDI Claims	567	467	100	7,151	7,718	7,897	7,806	8,583
Change from:								
Previous Week	-167	-133	-34	-12	-179			
Year Ago	-18	4	-22	-70	-88			

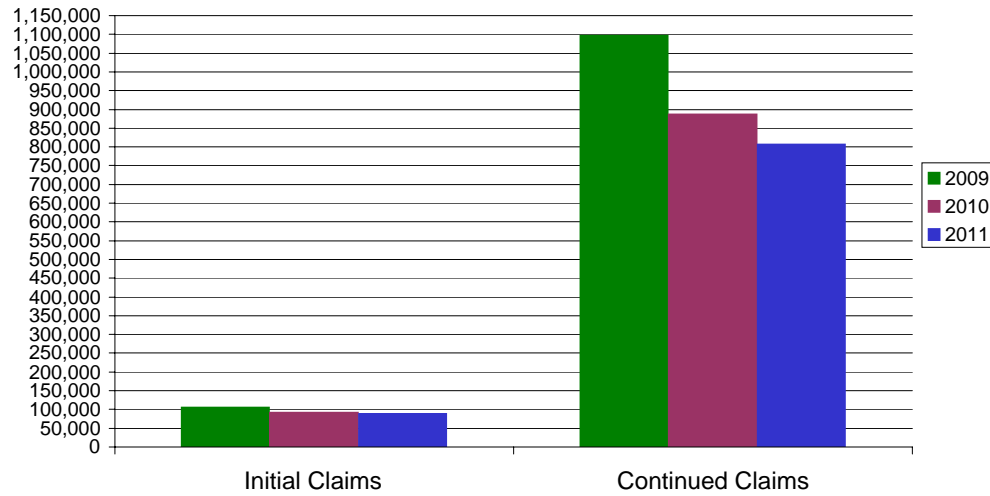
* Includes UI, EUC08, EB, Workshare & Interstate Liable.

Equal Opportunity Employer / Program / Auxiliary aids and services available upon request to individuals with disabilities / TTY via RI Relay 711.

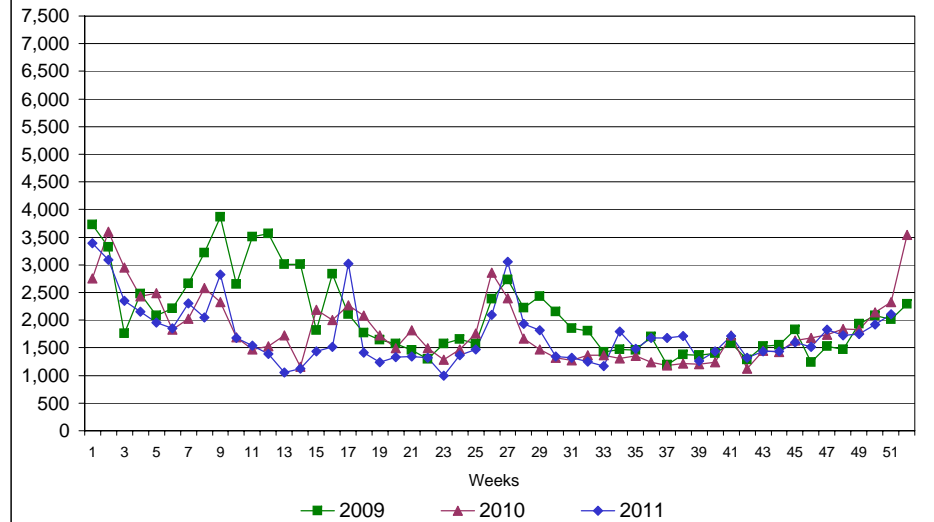
Rhode Island Department of Labor and Training

December 17, 2011

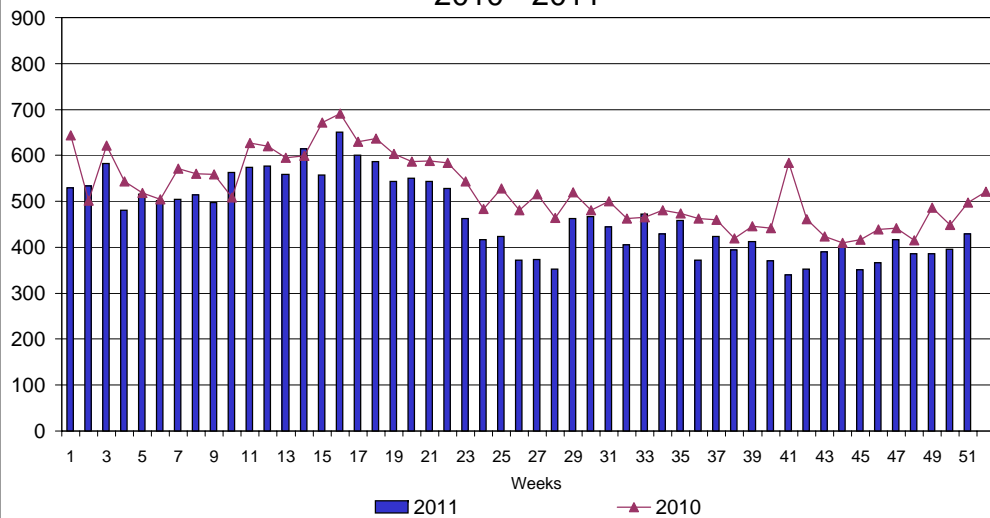
UI Claims Comparison Year to Date



UI Initial Claims 2009 - 2011



UI Exhaustions 2010 - 2011



TDI Claims Comparison Year to Date

