



Rhode Island Department of Labor and Training

Weekly Update of Claims Activity

Week Ending: December 10, 2011

Unemployment Insurance

Initial Claims – 1,921 initial claims were processed during the week ending 12/10/11, an increase of 179 from the previous week, and a decrease of 223 from a year ago. The number of initial claims filed to date is down 3.1 percent from last year and down 16.4 percent from two years ago.

Continued Claims – 14,118 continued claims were processed during the week of 12/10/11, a decrease of 489 from the previous week and a decrease of 1,303 from a year ago. The number of continued claims filed to date is down 9.1 percent from a year ago and down 26.6 percent from two years ago.

Workshare – gives employers an alternative to layoffs by allowing employees to work reduced hours and collect a percentage of regular UI benefits to compensate for lost pay. This week, 31 initial claims and 737 continued claims were processed. An estimated 10 layoffs were prevented this week, as a result of Workshare.

Emergency Unemployment Compensation 08 – EUC08, which became effective July 6, 2008, provides up to 53 weeks of federally funded benefits to eligible individuals who exhausted their UI claims. This week there were 376 new EUC08 claims processed and 12,832 continued claims processed (5,178 under tier I, 3,339 under tier II, 2,887 under tier III and 1,428 under tier IV).

Extended Benefits – are payable to individuals who have exhausted UI or EUC08 claims. This week, 105 new EB claims and 1,853 continued EB claims were processed.

Exhaustions – 396 individuals exhausted their regular payments this week, an increase of 10 from the previous week and a decrease of 52 from a year ago. There were 230 individuals that exhausted EUC08 and 60 individuals that exhausted EB.

Temporary Disability Insurance

Temporary Disability Insurance – 734 initial claims and 7,163 continued claims were processed for Temporary Disability Insurance. The average weekly TDI payment is \$446 per week. Rhode Island is currently paying an average of 10.6 weeks per new claim.

	Initial Claims			Continued Claims	TOTAL - Initial and Continued Claims			
	Total	New	Additional		Current Week	Previous Week	Year Ago	Two Years Ago
Total - All programs*	2,712	1,626	1,086	30,117	32,829	33,965	39,071	45,113
UI Claims	1,921	1,107	814	14,118	16,039	16,349	17,565	18,365
Change from:								
Previous Week	179	205	-26	-489	-310			
Year Ago	-223	-183	-40	-1,303	-1,526			
Two Years Ago	-166	162	-328	-2,160	-2,326			
EUC08 Claims	601	376	225	12,832	13,433	13,696	15,320	19,797
Extended Benefits	122	105	17	1,853	1,975	1,967	3,280	2,481
Interstate-Liable	37	21	16	577	614	617	686	705
Workshare	31	17	14	737	768	1,336	2,220	3,765
Workshare Equivalency	10	5	5	173	183	524	583	1,034
UI Exhaustions	-	-	-	396	396	386	448	521
EUC08 Exhaustions	-	-	-	230	230	269	358	0
EB Exhaustions	-	-	-	60	60	45	293	163
TDI Claims	734	600	134	7,163	7,897	7,453	8,303	9,502
Change from:								
Previous Week	-113	-96	-17	557	444			
Year Ago	2	-7	9	-408	-406			

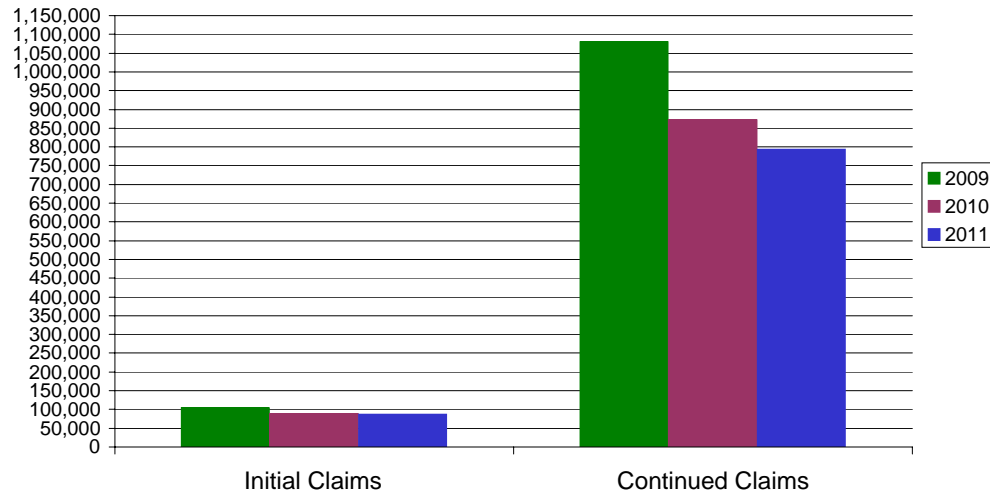
* Includes UI, EUC08, EB, Workshare & Interstate Liable.

Equal Opportunity Employer / Program / Auxiliary aids and services available upon request to individuals with disabilities / TTY via RI Relay 711.

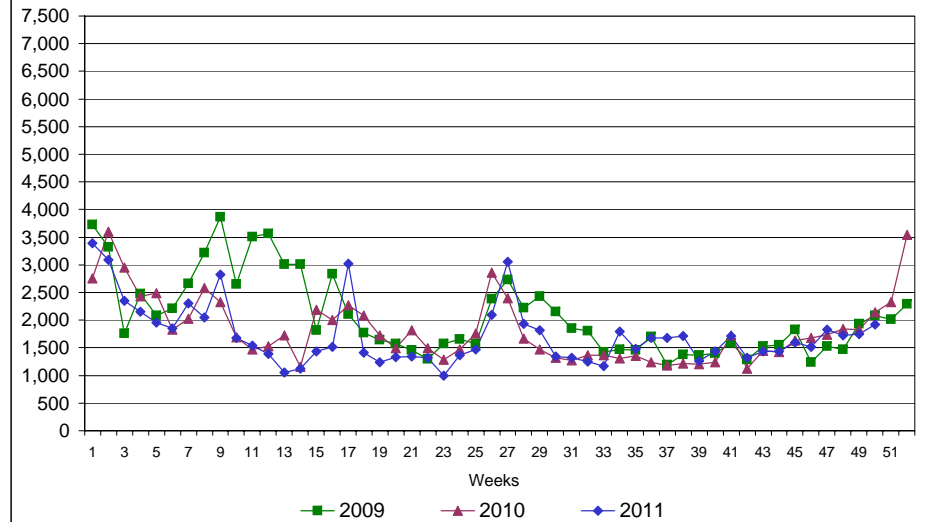
Rhode Island Department of Labor and Training

December 10, 2011

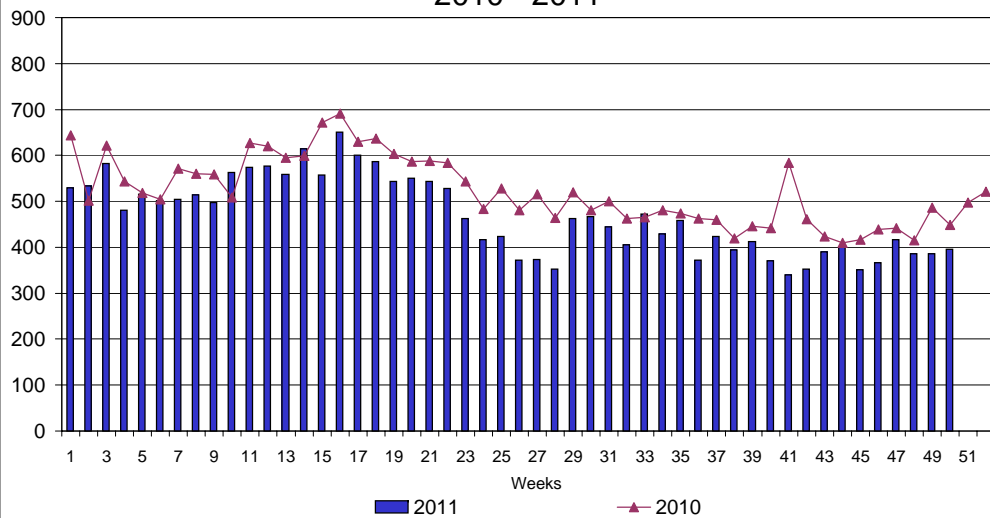
UI Claims Comparison Year to Date



UI Initial Claims 2009 - 2011



UI Exhaustions 2010 - 2011



TDI Claims Comparison Year to Date

