



## Rhode Island Department of Labor and Training

# *Weekly Update of Claims Activity*

*Week Ending: December 3, 2011*

### **Unemployment Insurance**

**Initial Claims** – 1,742 initial claims were processed during the week ending 12/3/11, an increase of 18 from the previous week, and a decrease of 82 from a year ago. The number of initial claims filed to date is down 2.9 percent from last year and down 16.6 percent from two years ago.

**Continued Claims** – 14,607 continued claims were processed during the week of 12/3/11, an increase of 1,566 from the previous week and a decrease of 277 from a year ago. The number of continued claims filed to date is down 9.1 percent from a year ago and down 26.8 percent from two years ago.

**Workshare** – gives employers an alternative to layoffs by allowing employees to work reduced hours and collect a percentage of regular UI benefits to compensate for lost pay. This week, 50 initial claims and 1,286 continued claims were processed. An estimated 19 layoffs were prevented this week, as a result of Workshare.

**Emergency Unemployment Compensation 08** – EUC08, which became effective July 6, 2008, provides up to 53 weeks of federally funded benefits to eligible individuals who exhausted their UI claims. This week there were 417 new EUC08 claims processed and 13,018 continued claims processed (5,202 under tier I, 3,368 under tier II, 3,071 under tier III and 1,377 under tier IV).

**Extended Benefits** – are payable to individuals who have exhausted UI or EUC08 claims. This week, 192 new EB claims and 1,759 continued EB claims were processed.

**Exhaustions** – 386 individuals exhausted their regular payments this week, no change from the previous week and a decrease of 100 from a year ago. There were 269 individuals that exhausted EUC08 and 45 individuals that exhausted EB.

### **Temporary Disability Insurance**

**Temporary Disability Insurance** – 847 initial claims and 6,606 continued claims were processed for Temporary Disability Insurance. The average weekly TDI payment is \$441 per week. Rhode Island is currently paying an average of 10.7 weeks per new claim.

	<b>Initial Claims</b>			<b>Continued Claims</b>	<b>TOTAL - Initial and Continued Claims</b>			
	<b>Total</b>	<b>New</b>	<b>Additional</b>		<b>Current Week</b>	<b>Previous Week</b>	<b>Year Ago</b>	<b>Two Years Ago</b>
<b>Total - All programs*</b>	2,727	1,581	1,146	31,238	33,965	31,827	36,979	44,229
<b>UI Claims</b>	1,742	902	840	14,607	16,349	14,765	16,708	18,288
Change from:								
Previous Week	18	13	5	1,566	1,584			
Year Ago	-82	-179	97	-277	-359			
Two Years Ago	-196	-226	30	-1,743	-1,939			
<b>EUC08 Claims</b>	678	417	261	13,018	13,696	13,563	14,993	19,128
<b>Extended Benefits</b>	208	192	16	1,759	1,967	1,796	3,066	2,664
<b>Interstate-Liable</b>	49	26	23	568	617	549	620	843
<b>Workshare</b>	50	44	6	1,286	1,336	1,154	1,592	3,306
<b>Workshare Equivalency</b>	19	18	1	505	524	283	478	779
<b>UI Exhaustions</b>	-	-	-	386	386	386	486	637
<b>EUC08 Exhaustions</b>	-	-	-	269	269	259	219	0
<b>EB Exhaustions</b>	-	-	-	45	45	54	588	154
<b>TDI Claims</b>	847	696	151	6,606	7,453	7,615	7,834	8,289
Change from:								
Previous Week	237	212	25	-399	-162			
Year Ago	112	85	27	-493	-381			

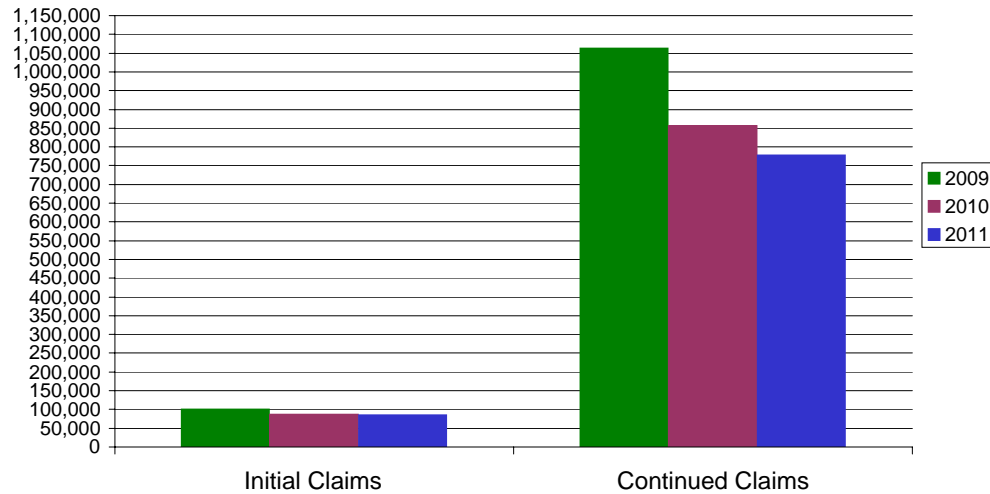
\* Includes UI, EUC08, EB, Workshare & Interstate Liable.

Equal Opportunity Employer / Program / Auxiliary aids and services available upon request to individuals with disabilities / TTY via RI Relay 711.

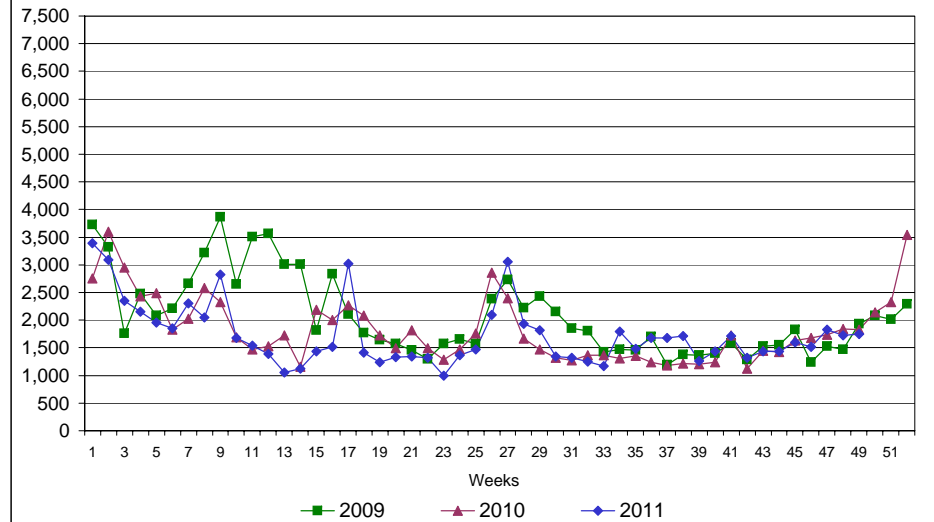
# Rhode Island Department of Labor and Training

## December 3, 2011

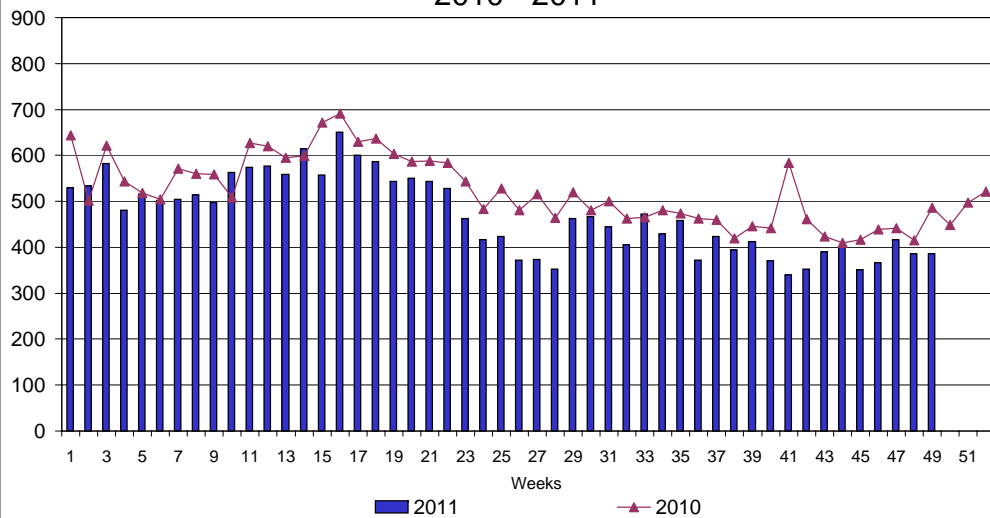
### UI Claims Comparison Year to Date



### UI Initial Claims 2009 - 2011



### UI Exhaustions 2010 - 2011



### TDI Claims Comparison Year to Date

