



Rhode Island Department of Labor and Training

Weekly Update of Claims Activity

Week Ending: November 26, 2011

Unemployment Insurance

Initial Claims – 1,724 initial claims were processed during the week ending 11/26/11, a decrease of 110 from the previous week, and a decrease of 115 from a year ago. The number of initial claims filed to date is down 2.8 percent from last year and down 16.7 percent from two years ago.

Continued Claims – 13,041 continued claims were processed during the week of 11/26/11, a decrease of 128 from the previous week and a decrease of 666 from a year ago. The number of continued claims filed to date is down 9.2 percent from a year ago and down 27.0 percent from two years ago.

Workshare – gives employers an alternative to layoffs by allowing employees to work reduced hours and collect a percentage of regular UI benefits to compensate for lost pay. This week, 109 initial claims and 1,045 continued claims were processed. An estimated 26 layoffs were prevented this week, as a result of Workshare.

Emergency Unemployment Compensation 08 – EUC08, which became effective July 6, 2008, provides up to 53 weeks of federally funded benefits to eligible individuals who exhausted their UI claims. This week there were 319 new EUC08 claims processed and 13,005 continued claims processed (5,064 under tier I, 3,603 under tier II, 2,916 under tier III and 1,422 under tier IV).

Extended Benefits – are payable to individuals who have exhausted UI or EUC08 claims. This week, 133 new EB claims and 1,653 continued EB claims were processed.

Exhaustions – 386 individuals exhausted their regular payments this week, a decrease of 31 from the previous week and a decrease of 29 from a year ago. There were 259 individuals that exhausted EUC08 and 54 individuals that exhausted EB.

Temporary Disability Insurance

Temporary Disability Insurance – 610 initial claims and 7,005 continued claims were processed for Temporary Disability Insurance. The average weekly TDI payment is \$442 per week. Rhode Island is currently paying an average of 10.7 weeks per new claim.

	Initial Claims			Continued Claims	TOTAL - Initial and Continued Claims			
	Total	New	Additional		Current Week	Previous Week	Year Ago	Two Years Ago
Total - All programs*	2,561	1,440	1,121	29,266	31,827	32,736	36,269	44,721
UI Claims	1,724	889	835	13,041	14,765	15,003	15,546	16,589
Change from:								
Previous Week	-110	-160	50	-128	-238			
Year Ago	-115	-103	-12	-666	-781			
Two Years Ago	249	142	107	-2,073	-1,824			
EUC08 Claims	558	319	239	13,005	13,563	13,512	14,909	21,307
Extended Benefits	143	133	10	1,653	1,796	1,772	3,178	2,798
Interstate-Liable	27	12	15	522	549	596	632	647
Workshare	109	87	22	1,045	1,154	1,853	2,004	3,380
Workshare Equivalency	26	21	5	257	283	438	506	763
UI Exhaustions	-	-	-	386	386	417	415	556
EUC08 Exhaustions	-	-	-	259	259	256	145	0
EB Exhaustions	-	-	-	54	54	62	609	153
TDI Claims	610	484	126	7,005	7,615	8,394	7,772	7,447
Change from:								
Previous Week	-235	-219	-16	-544	-779			
Year Ago	-3	-3	0	-154	-157			

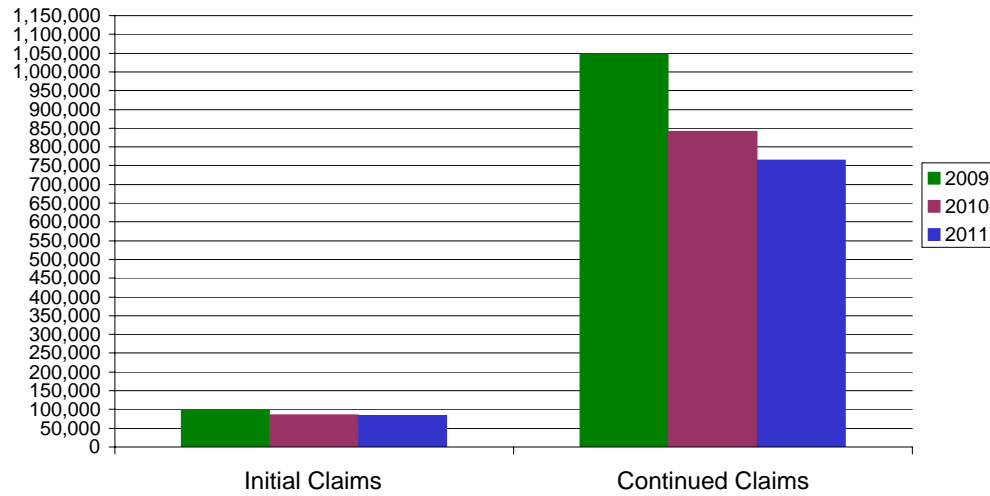
* Includes UI, EUC08, EB, Workshare & Interstate Liable.

Equal Opportunity Employer / Program / Auxiliary aids and services available upon request to individuals with disabilities / TTY via RI Relay 711.

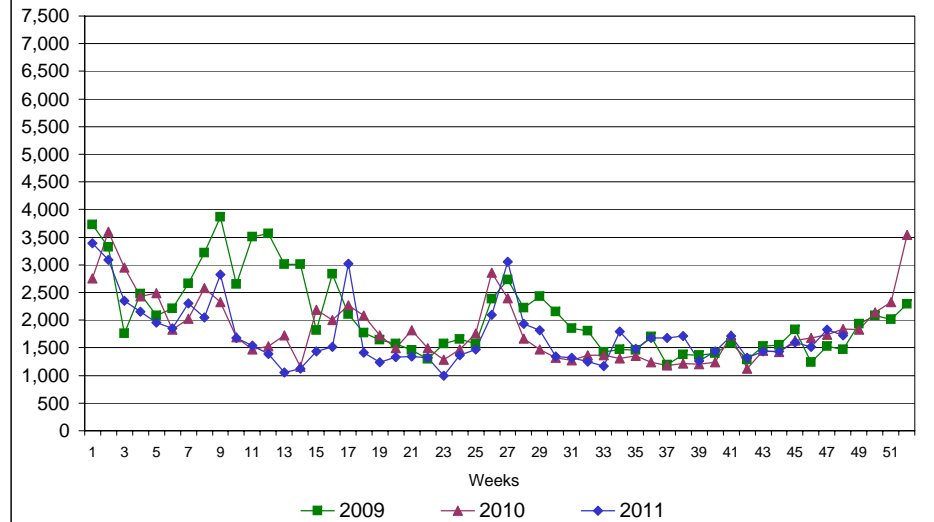
Rhode Island Department of Labor and Training

November 26, 2011

UI Claims Comparison Year to Date



UI Initial Claims 2009 - 2011



UI Exhaustions 2010 - 2011



TDI Claims Comparison Year to Date

