



Rhode Island Department of Labor and Training

Weekly Update of Claims Activity

Week Ending: November 19, 2011

Unemployment Insurance

Initial Claims – 1,834 initial claims were processed during the week ending 11/19/11, an increase of 321 from the previous week, and an increase of 99 from a year ago. The number of initial claims filed to date is down 2.8 percent from last year and down 17.2 percent from two years ago.

Continued Claims – 13,169 continued claims were processed during the week of 11/19/11, an increase of 582 from the previous week and a decrease of 713 from a year ago. The number of continued claims filed to date is down 9.3 percent from a year ago and down 27.2 percent from two years ago.

Workshare – gives employers an alternative to layoffs by allowing employees to work reduced hours and collect a percentage of regular UI benefits to compensate for lost pay. This week, 144 initial claims and 1,709 continued claims were processed. An estimated 44 layoffs were prevented this week, as a result of Workshare.

Emergency Unemployment Compensation 08 – EUC08, which became effective July 6, 2008, provides up to 53 weeks of federally funded benefits to eligible individuals who exhausted their UI claims. This week there were 421 new EUC08 claims processed and 12,783 continued claims processed (5,182 under tier I, 3,439 under tier II, 2,837 under tier III and 1,325 under tier IV).

Extended Benefits – are payable to individuals who have exhausted UI or EUC08 claims. This week, 114 new EB claims and 1,645 continued EB claims were processed.

Exhaustions – 417 individuals exhausted their regular payments this week, an increase of 50 from the previous week and a decrease of 25 from a year ago. There were 256 individuals that exhausted EUC08 and 62 individuals that exhausted EB.

Temporary Disability Insurance

Temporary Disability Insurance – 845 initial claims and 7,549 continued claims were processed for Temporary Disability Insurance. The average weekly TDI payment is \$441 per week. Rhode Island is currently paying an average of 10.7 weeks per new claim.

	Initial Claims			Continued Claims	TOTAL - Initial and Continued Claims			
	Total	New	Additional		Current Week	Previous Week	Year Ago	Two Years Ago
Total - All programs*	2,872	1,695	1,177	29,864	32,736	30,746	36,681	40,232
UI Claims	1,834	1,049	785	13,169	15,003	14,100	15,617	17,403
Change from:								
Previous Week	321	57	264	582	903			
Year Ago	99	-30	129	-713	-614			
Two Years Ago	301	162	139	-2,701	-2,400			
EUC08 Claims	729	421	308	12,783	13,512	13,225	14,493	15,783
Extended Benefits	127	114	13	1,645	1,772	1,713	3,843	3,023
Interstate-Liable	38	18	20	558	596	574	651	673
Workshare	144	93	51	1,709	1,853	1,134	2,077	3,350
Workshare Equivalency	44	28	16	394	438	283	498	794
UI Exhaustions	-	-	-	417	417	367	442	577
EUC08 Exhaustions	-	-	-	256	256	201	122	0
EB Exhaustions	-	-	-	62	62	43	671	139
TDI Claims	845	703	142	7,549	8,394	7,819	8,346	8,321
Change from:								
Previous Week	262	243	19	313	575			
Year Ago	22	14	8	26	48			

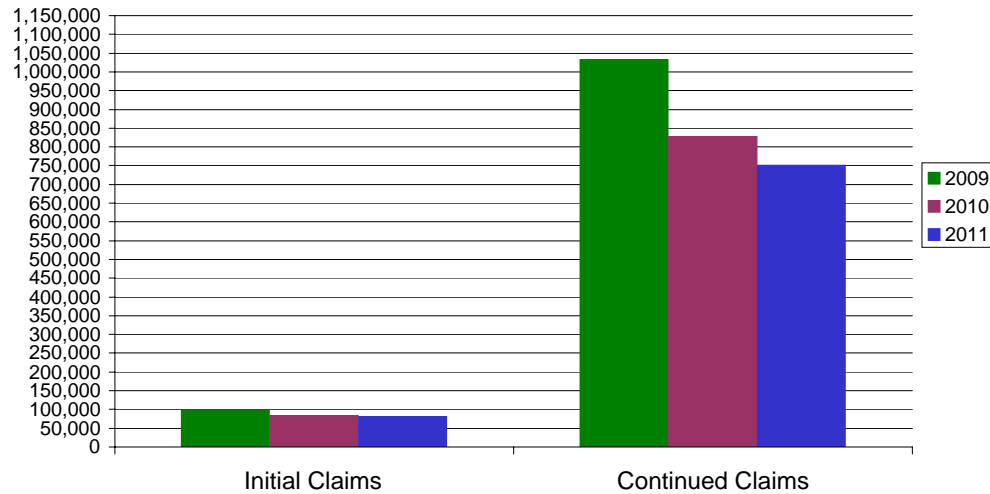
* Includes UI, EUC08, EB, Workshare & Interstate Liable.

Equal Opportunity Employer / Program / Auxiliary aids and services available upon request to individuals with disabilities / TTY via RI Relay 711.

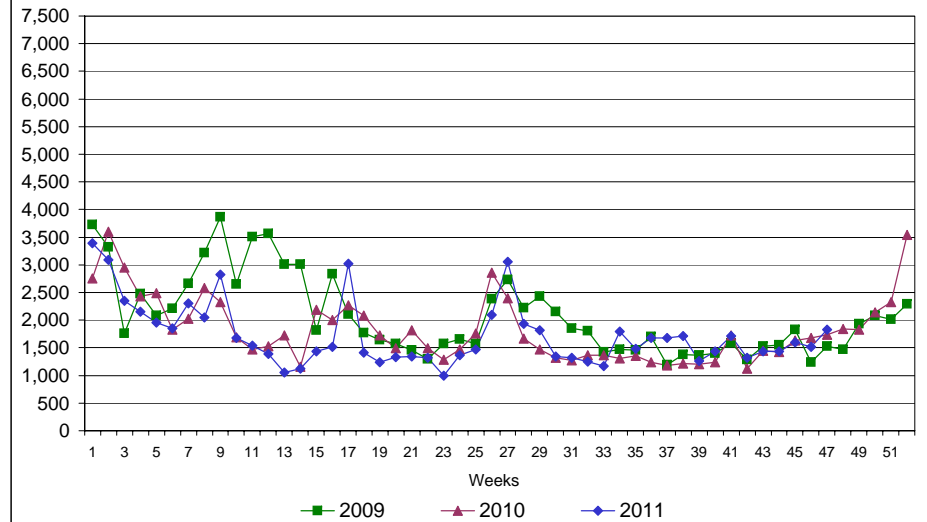
Rhode Island Department of Labor and Training

November 19, 2011

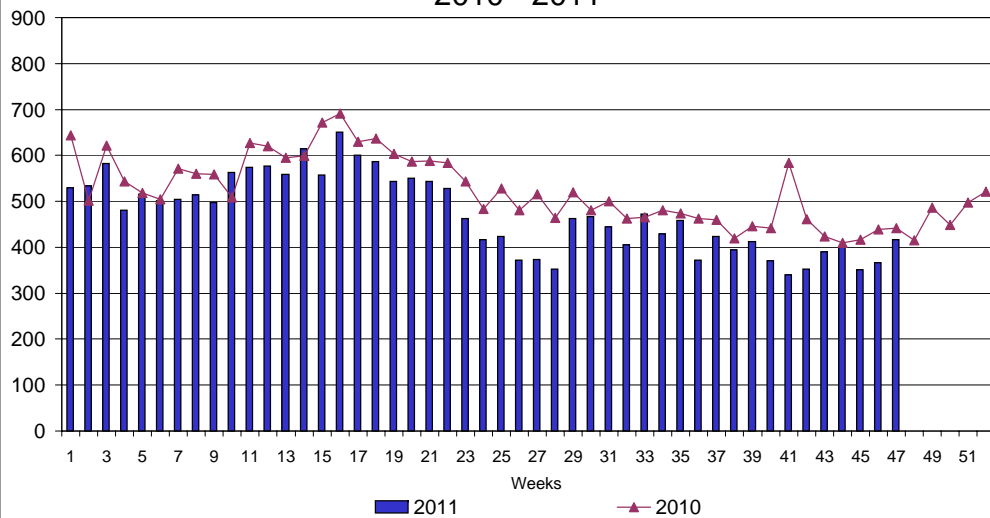
UI Claims Comparison Year to Date



UI Initial Claims 2009 - 2011



UI Exhaustions 2010 - 2011



TDI Claims Comparison Year to Date

