



## Rhode Island Department of Labor and Training

# *Weekly Update of Claims Activity*

*Week Ending: November 5, 2011*

### **Unemployment Insurance**

**Initial Claims** – 1,593 initial claims were processed during the week ending 11/5/11, an increase of 158 from the previous week, and a decrease of 41 from a year ago. The number of initial claims filed to date is down 2.8 percent from last year and down 18.3 percent from two years ago.

**Continued Claims** – 12,729 continued claims were processed during the week of 11/5/11, an increase of 707 from the previous week and a decrease of 625 from a year ago. The number of continued claims filed to date is down 9.5 percent from a year ago and down 27.5 percent from two years ago.

**Workshare** – gives employers an alternative to layoffs by allowing employees to work reduced hours and collect a percentage of regular UI benefits to compensate for lost pay. This week, 83 initial claims and 906 continued claims were processed. An estimated 19 layoffs were prevented this week, as a result of Workshare.

**Emergency Unemployment Compensation 08** – EUC08, which became effective July 6, 2008, provides up to 53 weeks of federally funded benefits to eligible individuals who exhausted their UI claims. This week there were 346 new EUC08 claims processed and 12,938 continued claims processed (5,176 under tier I, 3,494 under tier II, 2,849 under tier III and 1,419 under tier IV).

**Extended Benefits** – are payable to individuals who have exhausted UI or EUC08 claims. This week, 127 new EB claims and 1,573 continued EB claims were processed.

**Exhaustions** – 351 individuals exhausted their regular payments this week, a decrease of 50 from the previous week and a decrease of 65 from a year ago. There were 261 individuals that exhausted EUC08 and 68 individuals that exhausted EB.

### **Temporary Disability Insurance**

**Temporary Disability Insurance** – 878 initial claims and 6,951 continued claims were processed for Temporary Disability Insurance. The average weekly TDI payment is \$440 per week. Rhode Island is currently paying an average of 10.6 weeks per new claim.

	<b>Initial Claims</b>			<b>Continued Claims</b>	<b>TOTAL - Initial and Continued Claims</b>			
	<b>Total</b>	<b>New</b>	<b>Additional</b>		<b>Current Week</b>	<b>Previous Week</b>	<b>Year Ago</b>	<b>Two Years Ago</b>
<b>Total - All programs*</b>	2,499	1,531	968	28,666	31,165	29,914	35,682	38,449
<b>UI Claims</b>	1,593	963	630	12,729	14,322	13,457	14,988	16,953
Change from:								
Previous Week	158	145	13	707	865			
Year Ago	-41	-11	-30	-625	-666			
Two Years Ago	-239	-53	-186	-2,392	-2,631			
<b>EUC08 Claims</b>	647	346	301	12,938	13,585	13,428	13,130	14,419
<b>Extended Benefits</b>	135	127	8	1,573	1,708	1,655	5,207	3,268
<b>Interstate-Liable</b>	41	18	23	520	561	523	596	767
<b>Workshare</b>	83	77	6	906	989	851	1,761	3,042
<b>Workshare Equivalency</b>	19	17	2	225	244	226	415	693
<b>UI Exhaustions</b>	-	-	-	351	351	401	416	613
<b>EUC08 Exhaustions</b>	-	-	-	261	261	259	127	275
<b>EB Exhaustions</b>	-	-	-	68	68	50	697	142
<b>TDI Claims</b>	878	717	161	6,951	7,829	8,436	7,958	8,926
Change from:								
Previous Week	47	25	22	-654	-607			
Year Ago	187	147	40	-316	-129			

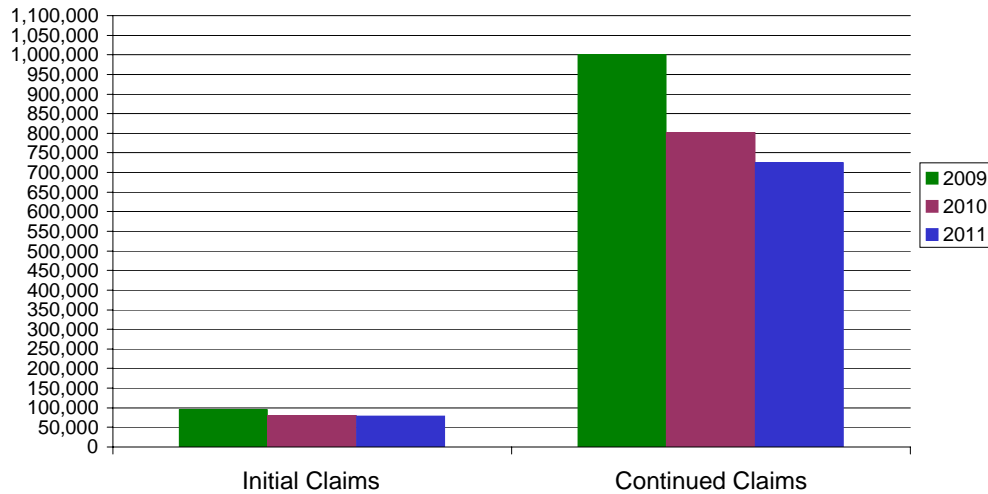
\* Includes UI, EUC08, EB, Workshare & Interstate Liable.

Equal Opportunity Employer / Program / Auxiliary aids and services available upon request to individuals with disabilities / TTY via RI Relay 711.

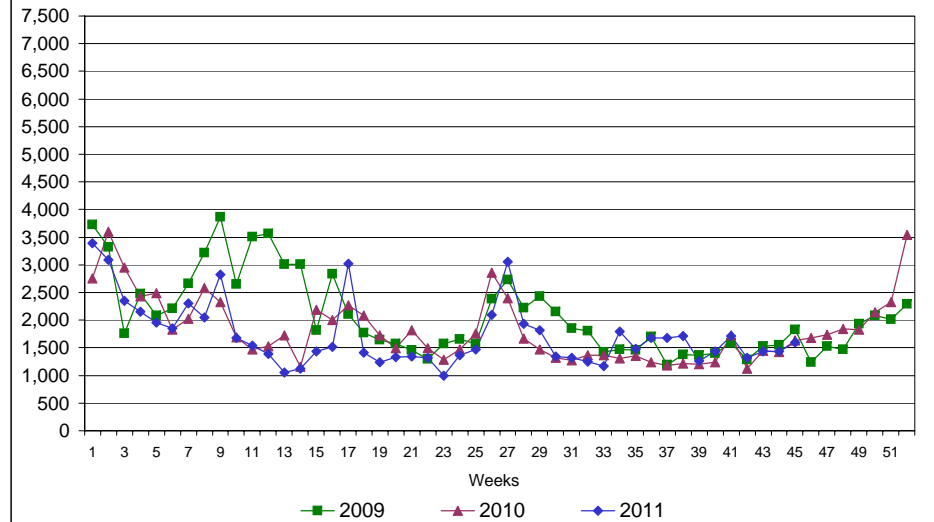
# Rhode Island Department of Labor and Training

## November 5, 2011

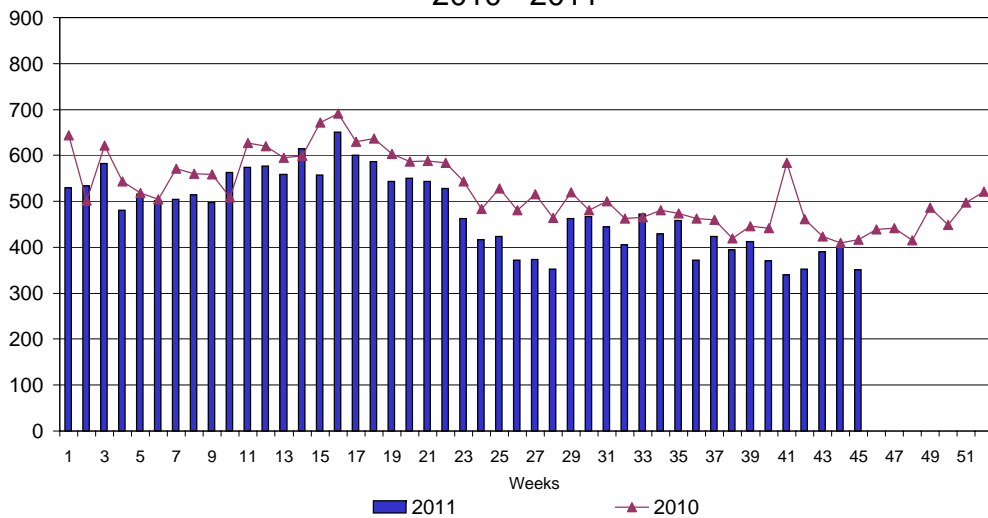
### UI Claims Comparison Year to Date



### UI Initial Claims 2009 - 2011



### UI Exhaustions 2010 - 2011



### TDI Claims Comparison Year to Date

