



Rhode Island Department of Labor and Training

Weekly Update of Claims Activity

Week Ending: October 26, 2013

Unemployment Insurance

Initial Claims – 1,146 initial claims were processed during the week ending 10/26/13, an increase of 217 from the previous week, and a decrease of 276 from a year ago. The number of initial claims filed to date is down 5.9 percent from last year and down 10.1 percent from two years ago. The Government shutdown which occurred on October 1, 2013 yielded about 19 initial claims from federal employees (UCFE) this week. In 2012 UCFE claims generally average 6 per week.

Continued Claims – 9,153 continued claims were processed during the week of 10/26/13, an increase of 115 from the previous week and a decrease of 1,452 from a year ago. The number of continued claims filed to date is down 11.1 percent from last year and down 19.6 percent from two years ago.

Workshare – gives employers an alternative to layoffs by allowing employees to work reduced hours and collect a percentage of regular UI benefits to compensate for lost pay. This week, 118 initial claims and 407 continued claims were processed. An estimated 27 layoffs were prevented this week, as a result of Workshare.

Emergency Unemployment Compensation 08 – EUC08, which became effective July 6, 2008, provides up to 53 weeks of federally funded benefits to eligible individuals who exhausted their UI claims. This week there were 259 new EUC08 claims processed and 4,773 continued claims processed (2,312 under tier I, 1,505 under tier II, 836 under tier III and 120 under tier IV).

Exhaustions – 241 individuals exhausted their regular payments this week, an increase of 5 from the previous week. There were 58 individuals that exhausted EUC08.

Temporary Disability Insurance

Temporary Disability Insurance – 842 initial claims and 7,213 continued claims were processed for Temporary Disability Insurance. The average weekly TDI payment is \$443 per week. Rhode Island is currently paying an average of 11.2 weeks per new claim.

	Initial Claims			Continued Claims	TOTAL - Initial and Continued Claims			
	Total	New	Additional		Current Week	Previous Week	Year Ago	Two Years Ago
Total - All programs*	1,707	1,058	649	14,938	16,645	15,889	22,653	28,259
UI Claims	1,146	694	452	9,153	10,299	9,967	12,027	13,457
Change from:								
Previous Week	217	107	110	115	332			
Year Ago	-276	-219	-57	-1,452	-1,728			
Two Years Ago	-289	-124	-165	-2,869	-3,158			
EUC08 Claims	395	259	136	4,773	5,168	5,002	9,407	13,428
Interstate-Liable	48	24	24	605	653	565	533	523
Workshare	118	81	37	407	525	355	686	851
Workshare Equivalency	27	20	7	97	124	88	159	226
UI Exhaustions	-	-	-	241	241	236	294	401
EUC08 Exhaustions	-	-	-	58	58	53	71	259
TDI Claims	842	715	127	7,213	8,055	7,456	8,646	8,436
Change from:								
Previous Week	227	195	32	372	599			
Year Ago	196	191	5	-787	-591			

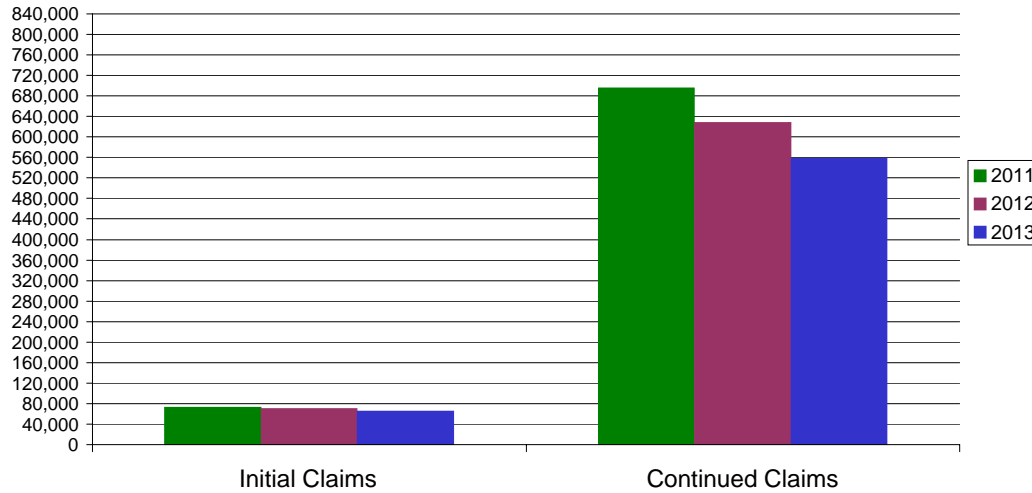
* Includes UI, EUC08, Workshare & Interstate Liable.

Equal Opportunity Employer / Program / Auxiliary aids and services available upon request to individuals with disabilities / TTY via RI Relay 711.

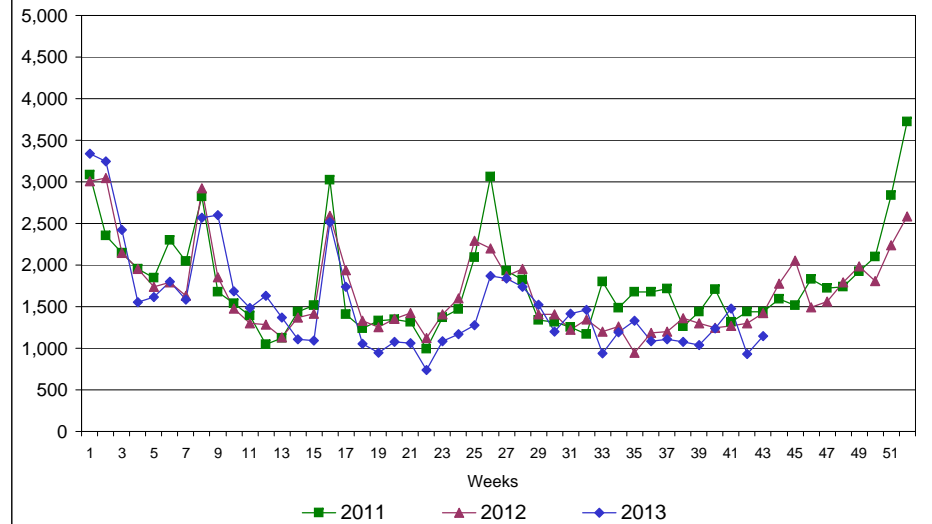
Rhode Island Department of Labor and Training

October 26, 2013

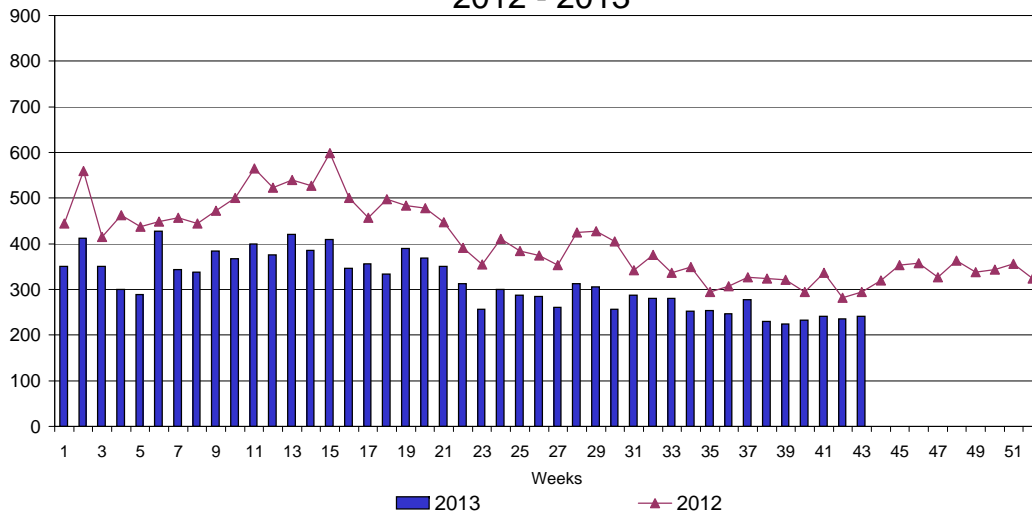
UI Claims Comparison Year to Date



UI Initial Claims 2011 - 2013



UI Exhaustions 2012 - 2013



TDI Claims Comparison Year to Date

