



Rhode Island Department of Labor and Training

Weekly Update of Claims Activity

Week Ending: October 19, 2013

Unemployment Insurance

Initial Claims – 929 initial claims were processed during the week ending 10/19/13, a decrease of 551 from the previous week, and a decrease of 369 from a year ago. The number of initial claims filed to date is down 5.6 percent from last year and down 9.9 percent from two years ago. The Government shutdown which occurred on October 1, 2013 yielded 39 initial claims from federal employees (UCFE) this week. In 2012 UCFE claims generally average 6 per week.

Continued Claims – 9,038 continued claims were processed during the week of 10/19/13, a decrease of 45 from the previous week and a decrease of 1,600 from a year ago. The number of continued claims filed to date is down 11.0 percent from last year and down 19.6 percent from two years ago.

Workshare – gives employers an alternative to layoffs by allowing employees to work reduced hours and collect a percentage of regular UI benefits to compensate for lost pay. This week, 41 initial claims and 314 continued claims were processed. An estimated 8 layoffs were prevented this week, as a result of Workshare.

Emergency Unemployment Compensation 08 – EUC08, which became effective July 6, 2008, provides up to 53 weeks of federally funded benefits to eligible individuals who exhausted their UI claims. This week there were 194 new EUC08 claims processed and 4,703 continued claims processed (2,252 under tier I, 1,447 under tier II, 834 under tier III and 170 under tier IV).

Exhaustions – 236 individuals exhausted their regular payments this week, a decrease of 5 from the previous week. There were 53 individuals that exhausted EUC08.

Temporary Disability Insurance

Temporary Disability Insurance – 615 initial claims and 6,841 continued claims were processed for Temporary Disability Insurance. The average weekly TDI payment is \$436 per week. Rhode Island is currently paying an average of 11.3 weeks per new claim.

	Initial Claims			Continued Claims	TOTAL - Initial and Continued Claims			
	Total	New	Additional		Current Week	Previous Week	Year Ago	Two Years Ago
Total - All programs*	1,293	818	475	14,596	15,889	16,818	22,336	27,944
UI Claims	929	587	342	9,038	9,967	10,563	11,936	13,188
Change from:								
Previous Week	-551	-511	-40	-45	-596			
Year Ago	-369	-240	-129	-1,600	-1,969			
Two Years Ago	-509	-314	-195	-2,712	-3,221			
EUC08 Claims	299	194	105	4,703	5,002	5,203	9,166	13,391
Interstate-Liable	24	14	10	541	565	609	441	501
Workshare	41	23	18	314	355	443	793	864
Workshare Equivalency	8	5	3	80	88	107	251	228
UI Exhaustions	-	-	-	236	236	241	282	390
EUC08 Exhaustions	-	-	-	53	53	43	57	225
TDI Claims	615	520	95	6,841	7,456	7,106	7,544	8,192
Change from:								
Previous Week	34	34	0	316	350			
Year Ago	-350	-300	-50	262	-88			

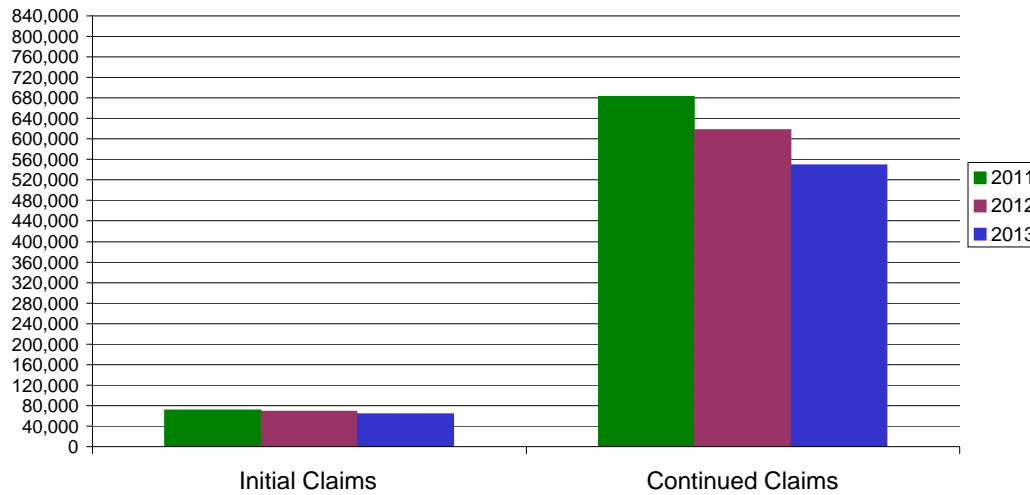
* Includes UI, EUC08, Workshare & Interstate Liable.

Equal Opportunity Employer / Program / Auxiliary aids and services available upon request to individuals with disabilities / TTY via RI Relay 711.

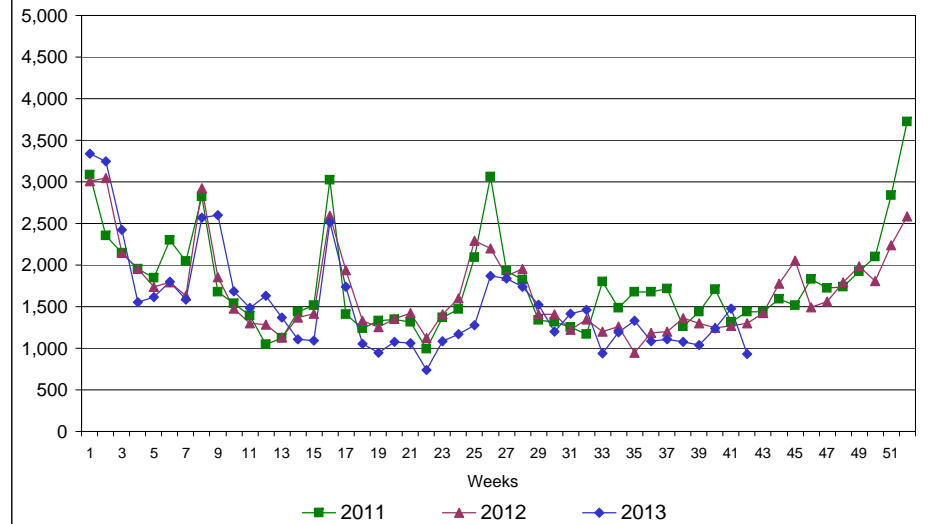
Rhode Island Department of Labor and Training

October 19, 2013

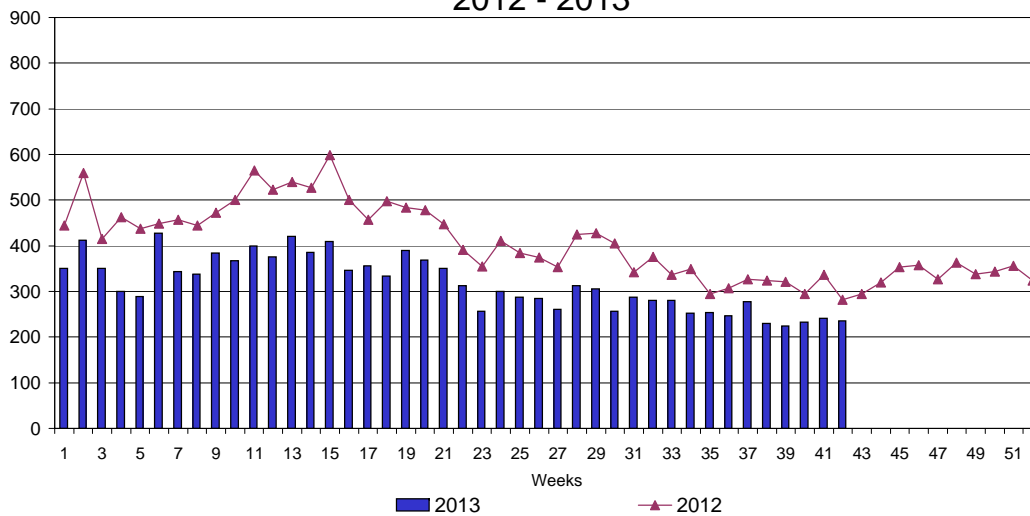
UI Claims Comparison Year to Date



UI Initial Claims 2011 - 2013



UI Exhaustions 2012 - 2013



TDI Claims Comparison Year to Date

