



## Rhode Island Department of Labor and Training

# *Weekly Update of Claims Activity*

*Week Ending: June 18, 2016*

### *Unemployment Insurance*

**Initial Claims** – 1,210 initial claims were processed during the week ending 6/18/16, an increase of 365 from the previous week, and a decrease of 104 from a year ago. The number of initial claims filed to date is down 5.8 percent from last year and down 16.6 percent from two years ago. Initial claims have increased due to the end of the school year.

**Continued Claims** – 7,294 continued claims were processed during the week of 6/18/16, a decrease of 145 from the previous week and a decrease of 466 from a year ago. The number of continued claims filed to date is down 11.1 percent from last year and down 22.6 percent from two years ago.

**Workshare** – gives employers an alternative to layoffs by allowing employees to work reduced hours and collect a percentage of regular UI benefits to compensate for lost pay. This week, 20 initial claims and 459 continued claims were processed. An estimated 8 layoffs were prevented this week, as a result of Workshare.

**Exhaustions** – 145 individuals exhausted their regular payments this week, a decrease of 29 from the previous week and a decrease of 49 from a year ago.

### *Temporary Disability Insurance*

**Temporary Disability Insurance** – 1,078 initial claims and 6,790 continued claims were processed for Temporary Disability Insurance. The average weekly TDI payment is \$475 per week. Rhode Island is currently paying an average of 10.4 weeks per new claim. To date there have been 22,838 TDI initial claims filed.

**Temporary Caregiver Insurance** – Of the 1,078 TDI initial claims, 174 (16.1%) were TCI Claims. This week 388 TCI payments were issued totaling \$203,130. The average weekly TCI payment was \$524. Of the 22,838 TDI claims filed in 2016, 4,238 or 18.6% were TCI claims.

	Initial Claims			Continued Claims	TOTAL - Initial and Continued Claims			
	Total	New	Additional		Current Week	Previous Week	Year Ago	Two Years Ago
<b>Total - All programs*</b>	1,255	658	597	8,160	9,415	9,105	9,811	11,673
<b>UI Claims</b>	1,210	627	583	7,294	8,504	8,284	9,074	10,679
Change from:								
Previous Week	365	47	318	-145	220			
Year Ago	-104	-150	46	-466	-570			
Two Years Ago	-419	-155	-264	-1,756	-2,175			
<b>Interstate-Liable</b>	25	14	11	407	432	417	404	454
<b>Workshare</b>	20	17	3	459	479	404	333	540
<b>Workshare Equivalency</b>	8	7	1	104	112	122	81	134
<b>UI Exhaustions</b>	-	-	-	145	145	174	194	255
<b>TDI Claims (Includes TCI)</b>	1,078	821	257	6,790	7,868	7,976	8,618	8,538
Change from:								
Previous Week	243	189	54	-351	-108			
Year Ago	339	236	103	-1,089	-750			

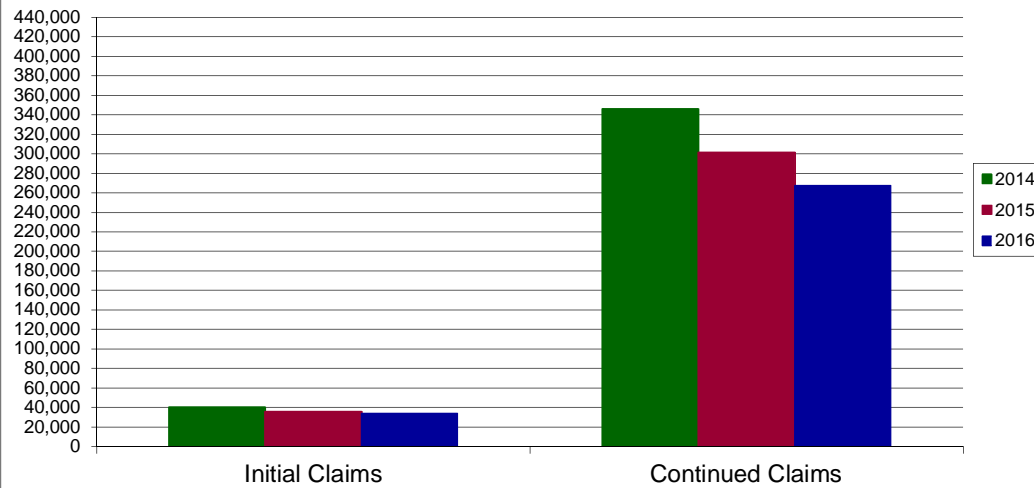
\* Includes UI, Workshare & Interstate Liable.

Equal Opportunity Employer / Program / Auxiliary aids and services available upon request to individuals with disabilities / TTY via RI Relay 71

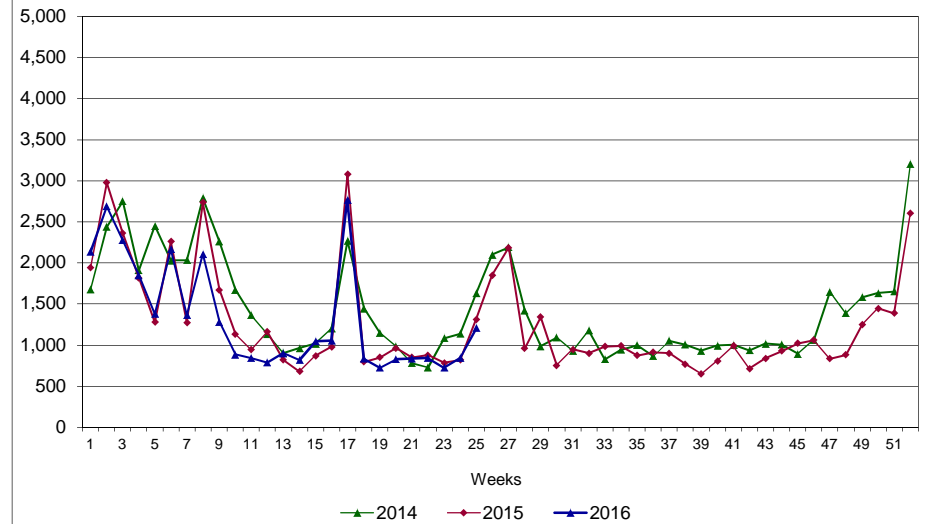
# Rhode Island Department of Labor and Training

## June 18, 2016

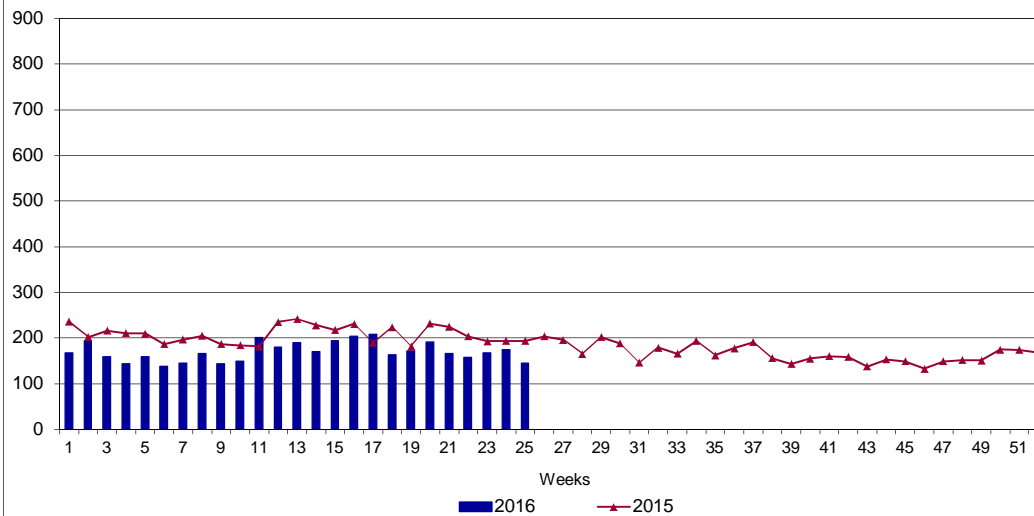
### UI Claims Comparison Year to Date



### UI Initial Claims 2014 - 2016



### UI Exhaustions 2015 - 2016



### TDI Claims Comparison Year to Date

