



## Rhode Island Department of Labor and Training

# *Weekly Update of Claims Activity*

**Week Ending: May 28, 2016**

### ***Unemployment Insurance***

**Initial Claims** – 843 initial claims were processed during the week ending 5/28/16, an increase of 9 from the previous week, and a decrease of 34 from a year ago. The number of initial claims filed to date is down 5.9 percent from last year and down 15.4 percent from two years ago.

**Continued Claims** – 7,678 continued claims were processed during the week of 5/28/16, a decrease of 74 from the previous week and a decrease of 323 from a year ago. The number of continued claims filed to date is down 11.6 percent from last year and down 23.0 percent from two years ago.

**Workshare** – gives employers an alternative to layoffs by allowing employees to work reduced hours and collect a percentage of regular UI benefits to compensate for lost pay. This week, 22 initial claims and 341 continued claims were processed. An estimated 7 layoffs were prevented this week, as a result of Workshare.

**Exhaustions** – 157 individuals exhausted their regular payments this week, a decrease 8 from the previous week and a decrease of 47 from a year ago.

### ***Temporary Disability Insurance***

**Temporary Disability Insurance** – 904 initial claims and 7,111 continued claims were processed for Temporary Disability Insurance. The average weekly TDI payment is \$471 per week. Rhode Island is currently paying an average of 10.3 weeks per new claim. To date there have been 20,241 TDI initial claims filed.

**Temporary Caregiver Insurance** – Of the 904 TDI initial claims, 171 (18.9%) were TCI Claims. This week 368 TCI payments were issued totaling \$190,937. The average weekly TCI payment was \$519. Of the 20,241 TDI claims filed in 2016, 3,711 or 18.3% were TCI claims.

	Initial Claims			Continued Claims	TOTAL - Initial and Continued Claims			
	Total	New	Additional		Current Week	Previous Week	Year Ago	Two Years Ago
<b>Total - All programs*</b>	889	575	314	8,403	9,292	9,575	9,931	10,632
<b>UI Claims</b>	843	543	300	7,678	8,521	8,586	8,878	10,017
Change from:								
Previous Week	9	33	-24	-74	-65			
Year Ago	-34	-18	-16	-323	-357			
Two Years Ago	115	125	-10	-1,611	-1,496			
<b>Interstate-Liable</b>	24	11	13	384	408	423	374	466
<b>Workshare</b>	22	21	1	341	363	566	679	149
<b>Workshare Equivalency</b>	7	7	0	106	113	141	151	39
<b>UI Exhaustions</b>	-	-	-	157	157	165	204	282
<b>TDI Claims (Includes TCI)</b>	904	695	209	7,111	8,015	8,371	7,771	7,128
Change from:								
Previous Week	-40	-29	-11	-316	-356			
Year Ago	-79	-58	-21	323	244			

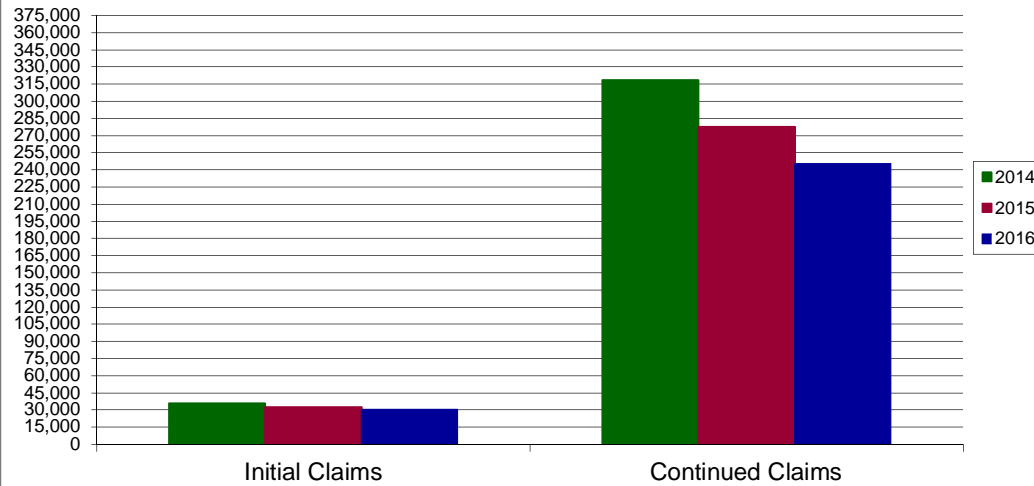
\* Includes UI, Workshare & Interstate Liable.

Equal Opportunity Employer / Program / Auxiliary aids and services available upon request to individuals with disabilities / TTY via RI Relay 711.

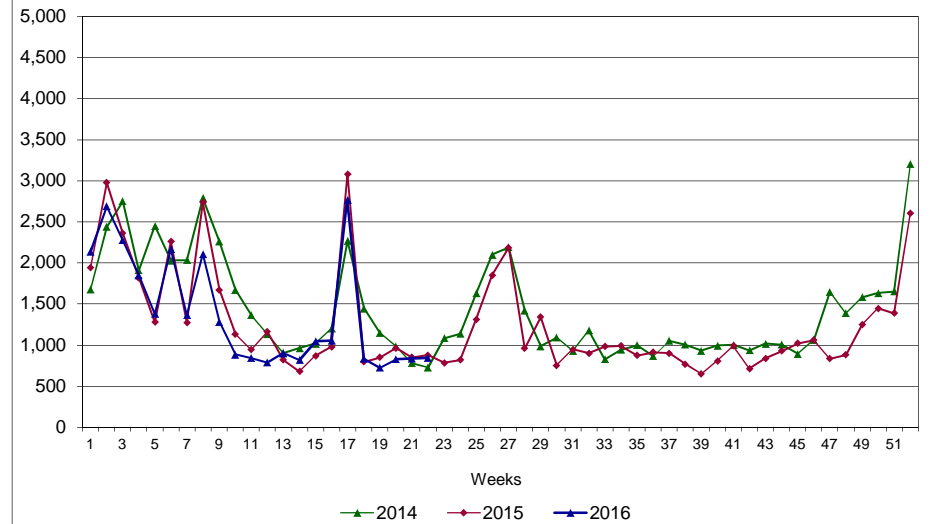
# Rhode Island Department of Labor and Training

## May 28, 2016

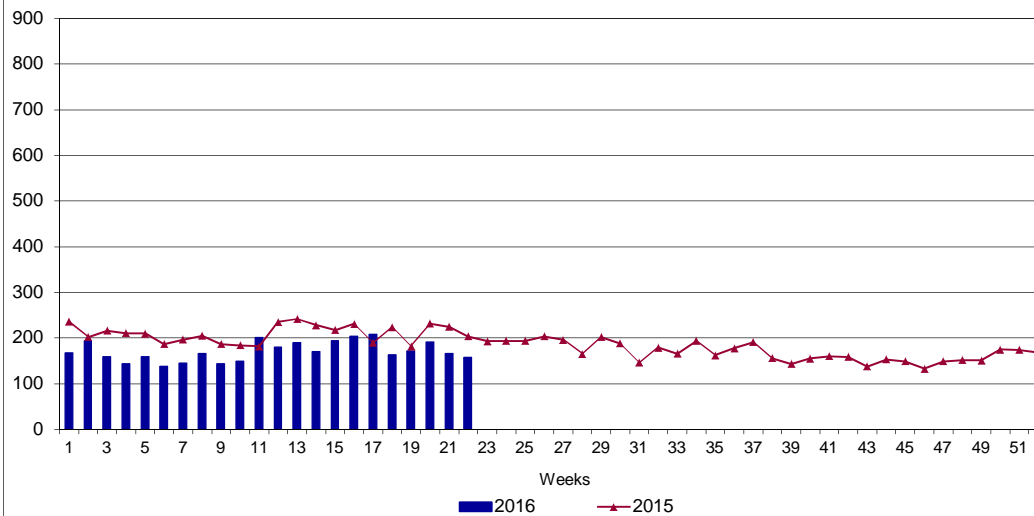
### UI Claims Comparison Year to Date



### UI Initial Claims 2014 - 2016



### UI Exhaustions 2015 - 2016



### TDI Claims Comparison Year to Date

