



Rhode Island Department of Labor and Training

Weekly Update of Claims Activity

Week Ending: May 21, 2016

Unemployment Insurance

Initial Claims – 834 initial claims were processed during the week ending 5/21/16, an increase of 5 from the previous week, and a decrease of 16 from a year ago. The number of initial claims filed to date is down 6.0 percent from last year and down 16.0 percent from two years ago.

Continued Claims – 7,752 continued claims were processed during the week of 5/21/16, a decrease of 477 from the previous week and a decrease of 496 from a year ago. The number of continued claims filed to date is down 11.8 percent from last year and down 23.2 percent from two years ago.

Workshare – gives employers an alternative to layoffs by allowing employees to work reduced hours and collect a percentage of regular UI benefits to compensate for lost pay. This week, 46 initial claims and 520 continued claims were processed. An estimated 9 layoffs were prevented this week, as a result of Workshare.

Exhaustions – 165 individuals exhausted their regular payments this week, a decrease 26 from the previous week and a decrease of 60 from a year ago.

Temporary Disability Insurance

Temporary Disability Insurance – 944 initial claims and 7,427 continued claims were processed for Temporary Disability Insurance. The average weekly TDI payment is \$476 per week. Rhode Island is currently paying an average of 10.3 weeks per new claim. To date there have been 19,337 TDI initial claims filed.

Temporary Caregiver Insurance – Of the 944 TDI initial claims, 175 (18.5%) were TCI Claims. This week 352 TCI payments were issued totaling \$189,954. The average weekly TCI payment was \$540. Of the 19,337 TDI claims filed in 2016, 3,540 or 18.3% were TCI claims.

| | Initial Claims | | | Continued Claims | TOTAL - Initial and Continued Claims | | | |
|----------------------------------|-----------------------|------------|-------------------|-------------------------|---|----------------------|-----------------|----------------------|
| | Total | New | Additional | | Current Week | Previous Week | Year Ago | Two Years Ago |
| Total - All programs* | 903 | 568 | 335 | 8,672 | 9,575 | 10,026 | 9,715 | 11,134 |
| UI Claims | 834 | 510 | 324 | 7,752 | 8,586 | 9,058 | 9,098 | 10,382 |
| Change from: | | | | | | | | |
| Previous Week | 5 | -5 | 10 | -477 | -472 | | | |
| Year Ago | -16 | 29 | -45 | -496 | -512 | | | |
| Two Years Ago | 55 | 73 | -18 | -1,851 | -1,796 | | | |
| Interstate-Liable | 23 | 12 | 11 | 400 | 423 | 476 | 388 | 475 |
| Workshare | 46 | 46 | 0 | 520 | 566 | 492 | 229 | 277 |
| Workshare Equivalency | 9 | 9 | 0 | 132 | 141 | 149 | 61 | 70 |
| UI Exhaustions | - | - | - | 165 | 165 | 191 | 225 | 297 |
| TDI Claims (Includes TCI) | 944 | 724 | 220 | 7,427 | 8,371 | 7,804 | 7,604 | 9,194 |
| Change from: | | | | | | | | |
| Previous Week | -111 | -87 | -24 | 678 | 567 | | | |
| Year Ago | 262 | 194 | 68 | 505 | 767 | | | |

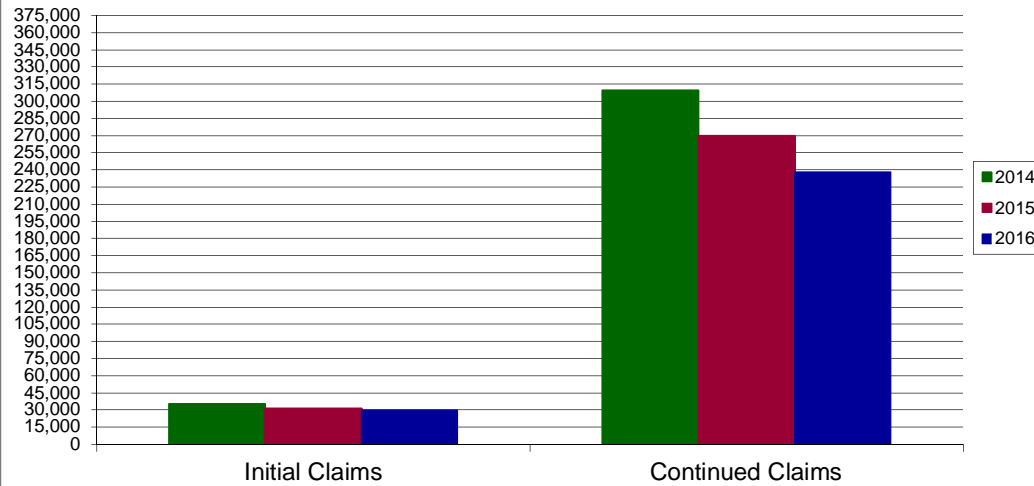
* Includes UI, Workshare & Interstate Liable.

Equal Opportunity Employer / Program / Auxiliary aids and services available upon request to individuals with disabilities / TTY via RI Relay 711.

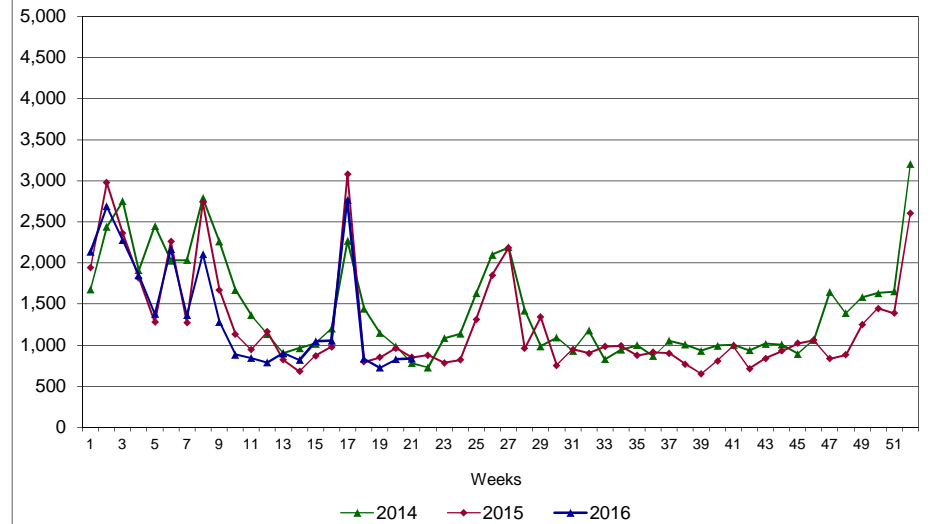
Rhode Island Department of Labor and Training

May 21, 2016

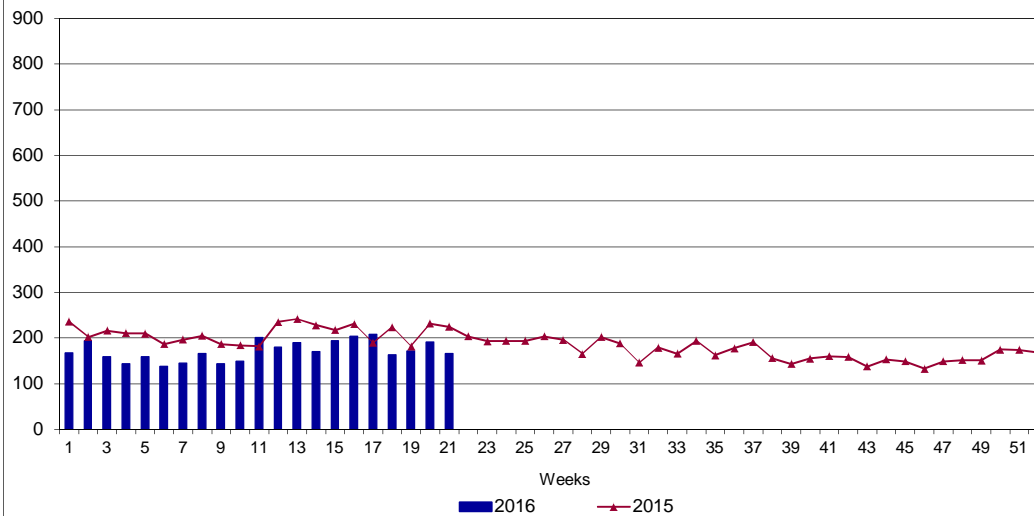
UI Claims Comparison Year to Date



UI Initial Claims 2014 - 2016



UI Exhaustions 2015 - 2016



TDI Claims Comparison Year to Date

