



Rhode Island Department of Labor and Training

Weekly Update of Claims Activity

Week Ending: April 27, 2013

Unemployment Insurance

Initial Claims – 1,739 initial claims were processed during the week ending 4/27/13, decrease of 774 from the previous week, and a decrease of 197 from a year ago. The number of initial claims filed to date is up 2.3 percent from last year and up 2.0 percent from two years ago

Continued Claims – 14,121 continued claims were processed during the week of 4/27/13, an increase of 1,268 from the previous week and a decrease of 1,430 from a year ago. The number of continued claims filed to date is down 7.7 percent from last year and down 16.1 percent from two years ago.

Workshare – gives employers an alternative to layoffs by allowing employees to work reduced hours and collect a percentage of regular UI benefits to compensate for lost pay. This week, 33 initial claims and 405 continued claims were processed. An estimated 7 layoffs were prevented this week, as a result of Workshare.

Emergency Unemployment Compensation 08 – EUC08, which became effective July 6, 2008, provides up to 53 weeks of federally funded benefits to eligible individuals who exhausted their UI claims. This week there were 289 new EUC08 claims processed and 7,311 continued claims processed (2,595 under tier I, 2,173 under tier II, 1,439 under tier III and 1,104 under tier IV).

Exhaustions – 356 individuals exhausted their regular payments this week, an increase of 10 from a year ago. There were 98 individuals that exhausted EUC08.

Temporary Disability Insurance

Temporary Disability Insurance – 567 initial claims and 6,550 continued claims were processed for Temporary Disability Insurance. The average weekly TDI payment is \$447 per week. Rhode Island is currently paying an average of 11.2 weeks per new claim.

	Initial Claims			Continued Claims	TOTAL - Initial and Continued Claims			
	Total	New	Additional		Current Week	Previous Week	Year Ago	Two Years Ago
Total - All programs*	2,277	1,176	1,101	22,332	24,609	24,039	30,089	35,355
UI Claims	1,739	828	911	14,121	15,860	15,366	17,487	18,534
Change from:								
Previous Week	-774	-67	-707	1,268	494			
Year Ago	-197	-69	-128	-1,430	-1,627			
Two Years Ago	332	82	250	-3,006	-2,674			
EUC08 Claims	459	289	170	7,311	7,770	7,633	11,494	14,776
Interstate-Liable	46	28	18	495	541	549	495	568
Workshare	33	31	2	405	438	491	613	1,477
Workshare Equivalency	7	6	1	105	112	138	171	381
UI Exhaustions	-	-	-	356	356	346	457	587
EUC08 Exhaustions	-	-	-	98	98	143	224	179
TDI Claims	567	473	94	6,550	7,117	7,631	7,460	7,921
Change from:								
Previous Week	-297	-238	-59	-217	-514			
Year Ago	-416	-351	-65	73	-343			

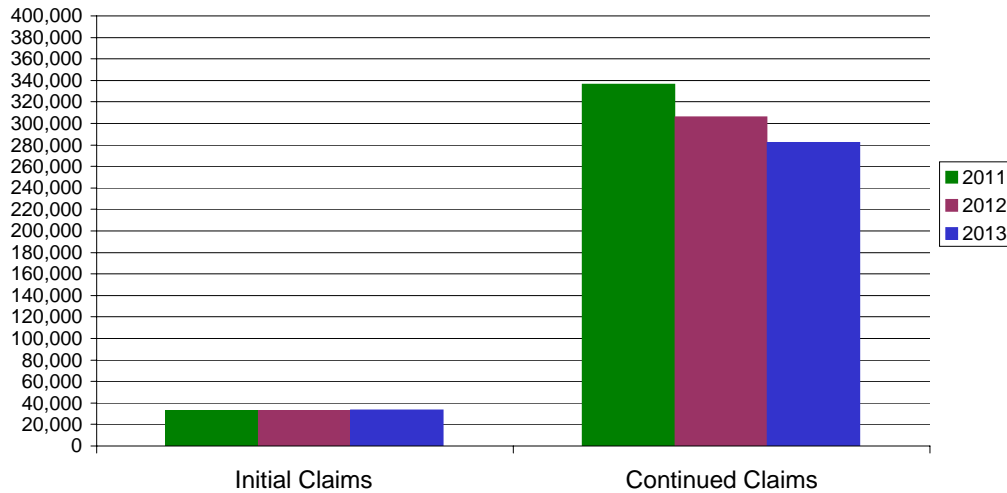
* Includes UI, EUC08, EB, Workshare & Interstate Liable.

Equal Opportunity Employer / Program / Auxiliary aids and services available upon request to individuals with disabilities / TTY via RI Relay 711.

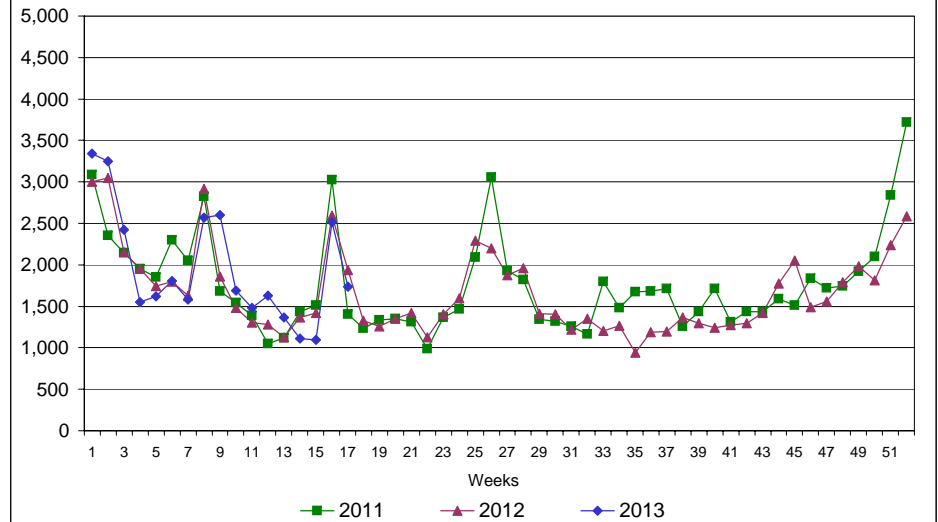
Rhode Island Department of Labor and Training

April 27, 2013

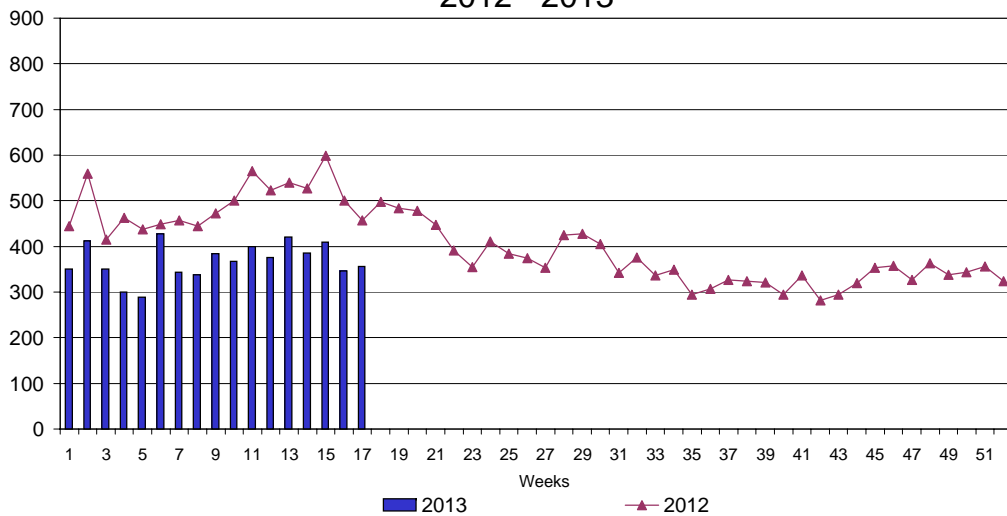
UI Claims Comparison Year to Date



UI Initial Claims 2011 - 2013



UI Exhaustions 2012 - 2013



TDI Claims Comparison Year to Date

