



## Rhode Island Department of Labor and Training

# *Weekly Update of Claims Activity*

*Week Ending: April 20, 2013*

### *Unemployment Insurance*

**Initial Claims** – 2,513 initial claims were processed during the week ending 4/20/13, an increase of 1,417 from the previous week, and a decrease of 78 from a year ago. The number of initial claims filed to date is up 3.1 percent from last year and up 1.0 percent from two years ago

**Continued Claims** – 12,853 continued claims were processed during the week of 4/20/13, a decrease of 1,139 from the previous week and a decrease of 1,400 from a year ago. The number of continued claims filed to date is down 7.6 percent from last year and down 16.0 percent from two years ago.

**Workshare** – gives employers an alternative to layoffs by allowing employees to work reduced hours and collect a percentage of regular UI benefits to compensate for lost pay. This week, 23 initial claims and 468 continued claims were processed. An estimated 5 layoffs were prevented this week, as a result of Workshare.

**Emergency Unemployment Compensation 08** – EUC08, which became effective July 6, 2008, provides up to 53 weeks of federally funded benefits to eligible individuals who exhausted their UI claims. This week there were 227 new EUC08 claims processed and 7,272 continued claims processed (2,611 under tier I, 2,160 under tier II, 1,394 under tier III and 1,107 under tier IV).

**Exhaustions** – 346 individuals exhausted their regular payments this week, a decrease of 63 from a year ago. There were 143 individuals that exhausted EUC08.

### *Temporary Disability Insurance*

**Temporary Disability Insurance** – 711 initial claims and 6,767 continued claims were processed for Temporary Disability Insurance. The average weekly TDI payment is \$437 per week. Rhode Island is currently paying an average of 11.0 weeks per new claim.

|                              | Initial Claims |       |            | Continued Claims | TOTAL - Initial and Continued Claims |               |          |               |
|------------------------------|----------------|-------|------------|------------------|--------------------------------------|---------------|----------|---------------|
|                              | Total          | New   | Additional |                  | Current Week                         | Previous Week | Year Ago | Two Years Ago |
| <b>Total - All programs*</b> | 2,922          | 1,154 | 1,768      | 21,117           | 24,039                               | 23,974        | 30,661   | 35,741        |
| <b>UI Claims</b>             | 2,513          | 895   | 1,618      | 12,853           | 15,366                               | 15,088        | 16,844   | 19,245        |
| Change from:                 |                |       |            |                  |                                      |               |          |               |
| Previous Week                | 1,417          | 257   | 1,160      | -1,139           | 278                                  |               |          |               |
| Year Ago                     | -78            | 60    | -138       | -1,400           | -1,478                               |               |          |               |
| Two Years Ago                | -508           | -169  | -339       | -3,371           | -3,879                               |               |          |               |
| <b>EUC08 Claims</b>          | 361            | 227   | 134        | 7,272            | 7,633                                | 7,872         | 11,631   | 14,643        |
| <b>Interstate-Liable</b>     | 25             | 14    | 11         | 524              | 549                                  | 556           | 523      | 597           |
| <b>Workshare</b>             | 23             | 18    | 5          | 468              | 491                                  | 458           | 1,663    | 1,256         |
| <b>Workshare Equivalency</b> | 5              | 4     | 1          | 133              | 138                                  | 120           | 457      | 291           |
| <b>UI Exhaustions</b>        | -              | -     | -          | 346              | 346                                  | 409           | 501      | 600           |
| <b>EUC08 Exhaustions</b>     | -              | -     | -          | 143              | 143                                  | 131           | 206      | 170           |
| <b>TDI Claims</b>            | 864            | 711   | 153        | 6,767            | 7,631                                | 7,581         | 6,912    | 7,783         |
| Change from:                 |                |       |            |                  |                                      |               |          |               |
| Previous Week                | 303            | 265   | 38         | -253             | 50                                   |               |          |               |
| Year Ago                     | 364            | 305   | 59         | 355              | 719                                  |               |          |               |

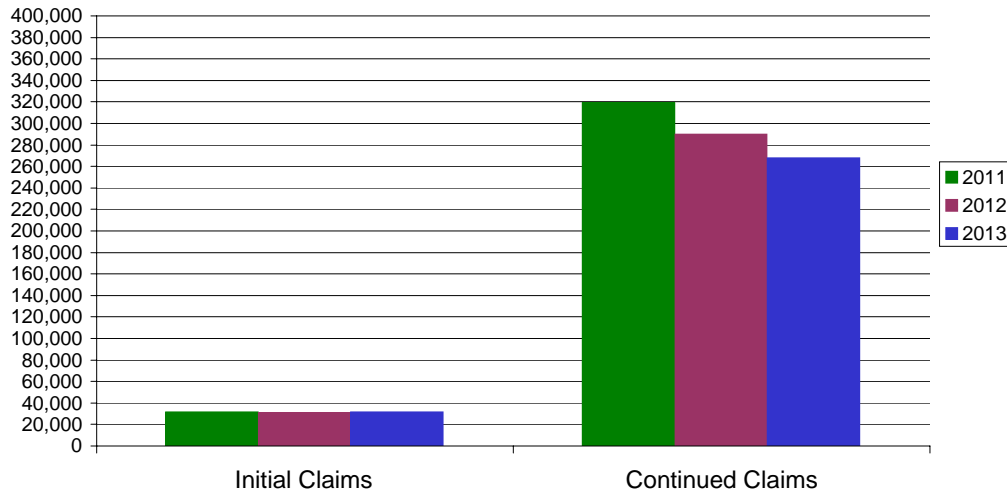
\* Includes UI, EUC08, EB, Workshare & Interstate Liable.

Equal Opportunity Employer / Program / Auxiliary aids and services available upon request to individuals with disabilities / TTY via RI Relay 711.

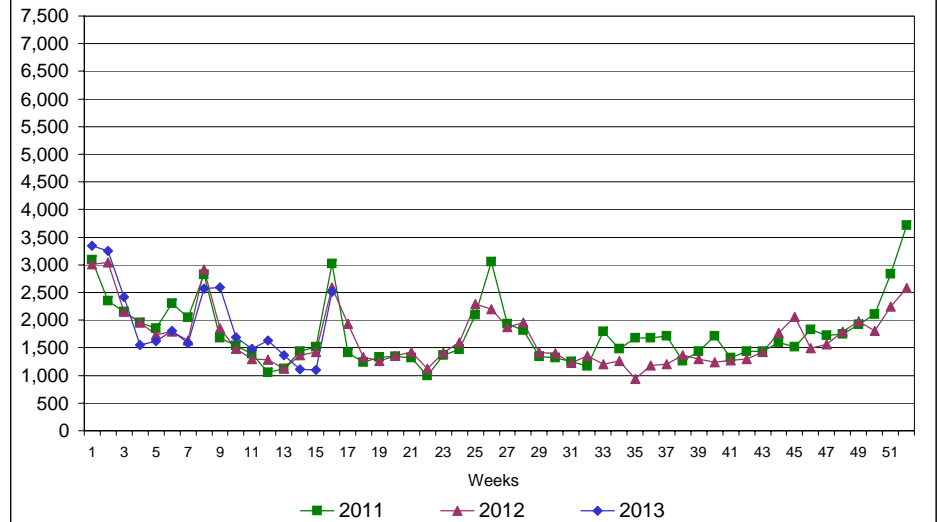
# Rhode Island Department of Labor and Training

## April 20, 2013

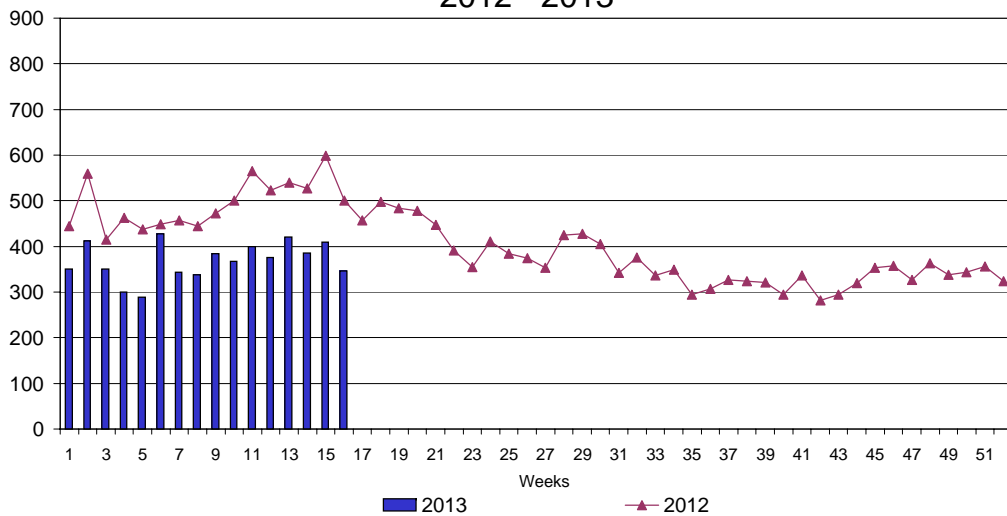
### UI Claims Comparison Year to Date



### UI Initial Claims 2011 - 2013



### UI Exhaustions 2012 - 2013



### TDI Claims Comparison Year to Date

