



## Rhode Island Department of Labor and Training

# *Weekly Update of Claims Activity*

*Week Ending: April 6, 2013*

### *Unemployment Insurance*

**Initial Claims** – 1,110 initial claims were processed during the week ending 4/6/13, a decrease of 256 from the previous week, and a decrease of 258 from a year ago. The number of initial claims filed to date is up 5.1 percent from last year and up 4.6 percent from two years ago

**Continued Claims** – 15,653 continued claims were processed during the week of 4/6/13, a decrease of 680 from the previous week and a decrease of 376 from a year ago. The number of continued claims filed to date is down 7.6 percent from last year and down 15.7 percent from two years ago.

**Workshare** – gives employers an alternative to layoffs by allowing employees to work reduced hours and collect a percentage of regular UI benefits to compensate for lost pay. This week, 29 initial claims and 579 continued claims were processed. An estimated 8 layoffs were prevented this week, as a result of Workshare.

**Emergency Unemployment Compensation 08** – EUC08, which became effective July 6, 2008, provides up to 53 weeks of federally funded benefits to eligible individuals who exhausted their UI claims. This week there were 320 new EUC08 claims processed and 7,659 continued claims processed (2,757 under tier I, 2,419 under tier II, 1,341 under tier III and 1,142 under tier IV).

**Exhaustions** – 386 individuals exhausted their regular payments this week, a decrease of 35 from a year ago. There were 107 individuals that exhausted EUC08.

### *Temporary Disability Insurance*

**Temporary Disability Insurance** – 1,012 initial claims and 6,649 continued claims were processed for Temporary Disability Insurance. The average weekly TDI payment is \$441 per week. Rhode Island is currently paying an average of 11.0 weeks per new claim.

	Initial Claims			Continued Claims	TOTAL - Initial and Continued Claims			
	Total	New	Additional		Current Week	Previous Week	Year Ago	Two Years Ago
<b>Total - All programs*</b>	1,648	960	688	24,412	26,060	27,162	31,244	35,575
<b>UI Claims</b>	1,110	604	506	15,653	16,763	17,699	17,397	19,095
Change from:								
Previous Week	-256	-174	-82	-680	-936			
Year Ago	-258	-211	-47	-376	-634			
Two Years Ago	-325	-302	-23	-2,007	-2,332			
<b>EUC08 Claims</b>	475	320	155	7,659	8,134	8,273	11,875	14,605
<b>Interstate-Liable</b>	34	19	15	521	555	554	578	531
<b>Workshare</b>	29	17	12	579	608	636	1,394	1,344
<b>Workshare Equivalency</b>	8	6	2	167	175	164	357	391
<b>UI Exhaustions</b>	-	-	-	386	386	421	527	557
<b>EUC08 Exhaustions</b>	-	-	-	107	107	123	191	265
<b>TDI Claims</b>	1,012	865	147	6,649	7,661	7,963	8,134	8,397
Change from:								
Previous Week	326	296	30	-628	-302			
Year Ago	168	169	-1	-641	-473			

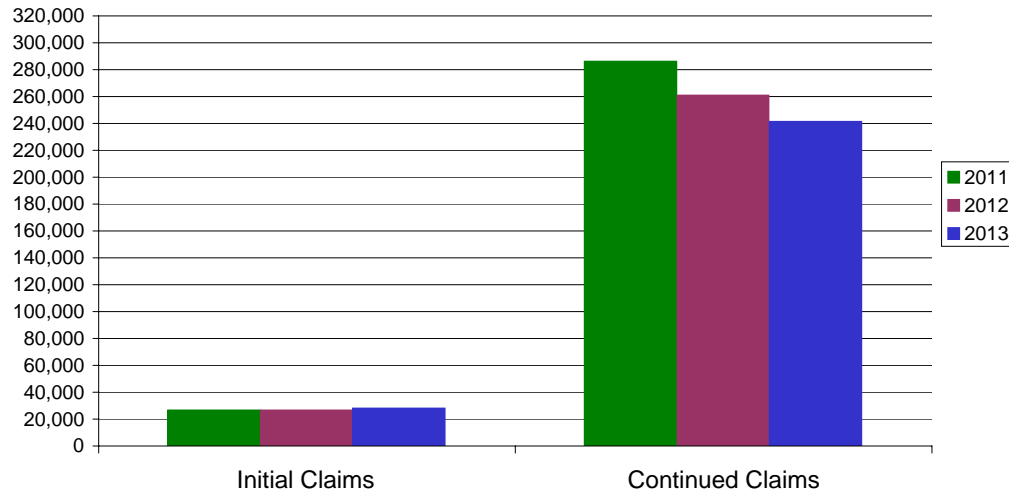
\* Includes UI, EUC08, EB, Workshare & Interstate Liable.

Equal Opportunity Employer / Program / Auxiliary aids and services available upon request to individuals with disabilities / TTY via RI Relay 711.

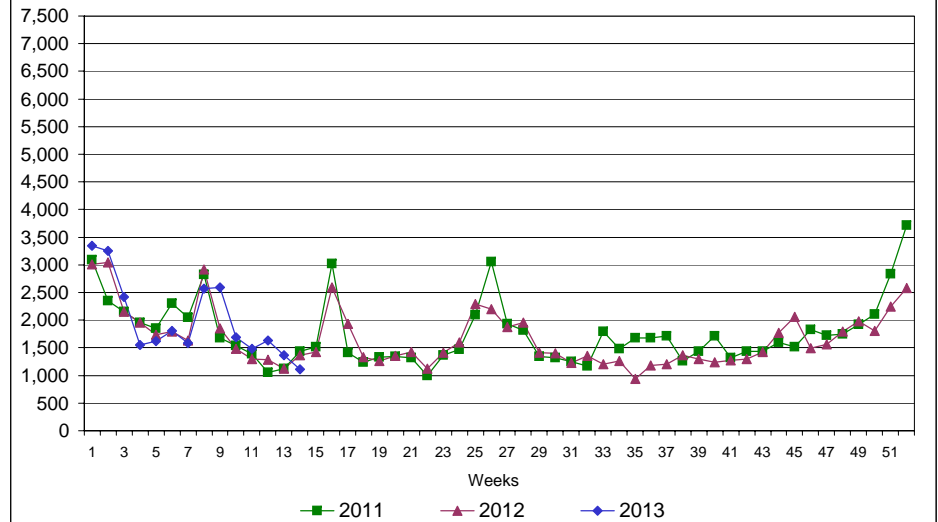
# Rhode Island Department of Labor and Training

## April 6, 2013

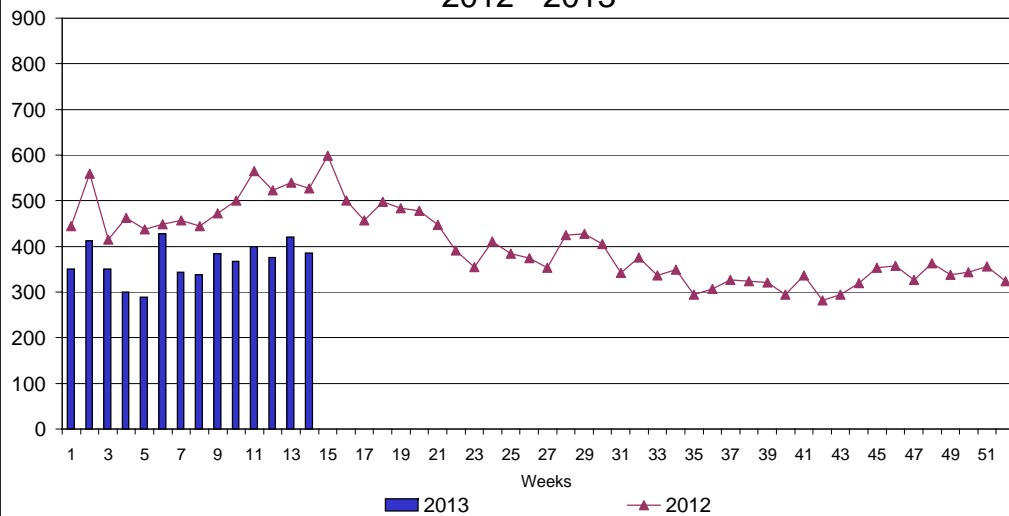
### UI Claims Comparison Year to Date



### UI Initial Claims 2011 - 2013



### UI Exhaustions 2012 - 2013



### TDI Claims Comparison Year to Date

