



Rhode Island Department of Labor and Training

Weekly Update of Claims Activity

Week Ending: March 30, 2013

Unemployment Insurance

Initial Claims – 1,366 initial claims were processed during the week ending 3/30/13, a decrease of 265 from the previous week, and an increase of 239 from a year ago. The number of initial claims filed to date is up 6.4 percent from last year and up 6.2 percent from two years ago

Continued Claims – 16,333 continued claims were processed during the week of 3/30/13, a decrease of 724 from the previous week and a decrease of 580 from a year ago. The number of continued claims filed to date is down 7.9 percent from last year and down 16.0 percent from two years ago.

Workshare – gives employers an alternative to layoffs by allowing employees to work reduced hours and collect a percentage of regular UI benefits to compensate for lost pay. This week, 54 initial claims and 582 continued claims were processed. An estimated 18 layoffs were prevented this week, as a result of Workshare.

Emergency Unemployment Compensation 08 – EUC08, which became effective July 6, 2008, provides up to 53 weeks of federally funded benefits to eligible individuals who exhausted their UI claims. This week there were 367 new EUC08 claims processed and 7,723 continued claims processed (2,803 under tier I, 2,457 under tier II, 1,279 under tier III and 1,184 under tier IV).

Exhaustions – 421 individuals exhausted their regular payments this week, an increase of 45 from a year ago. There were 123 individuals that exhausted EUC08.

Temporary Disability Insurance

Temporary Disability Insurance – 686 initial claims and 7,277 continued claims were processed for Temporary Disability Insurance. The average weekly TDI payment is \$444 per week. Rhode Island is currently paying an average of 11.1 weeks per new claim.

	Initial Claims			Continued Claims	TOTAL - Initial and Continued Claims			
	Total	New	Additional		Current Week	Previous Week	Year Ago	Two Years Ago
Total - All programs*	2,002	1,190	812	25,160	27,162	28,002	31,497	37,255
UI Claims	1,366	778	588	16,333	17,699	18,688	18,040	20,333
Change from:								
Previous Week	-265	-178	-87	-724	-989			
Year Ago	239	168	71	-580	-341			
Two Years Ago	245	111	134	-2,879	-2,634			
EUC08 Claims	550	367	183	7,723	8,273	8,319	12,112	14,820
Interstate-Liable	32	16	16	522	554	549	596	614
Workshare	54	29	25	582	636	446	749	1,488
Workshare Equivalency	18	9	9	146	164	122	198	380
UI Exhaustions	-	-	-	421	421	376	540	614
EUC08 Exhaustions	-	-	-	123	123	117	213	283
TDI Claims	686	569	117	7,277	7,963	7,436	8,016	8,151
Change from:								
Previous Week	-51	-14	-37	578	527			
Year Ago	-63	-15	-48	10	-53			

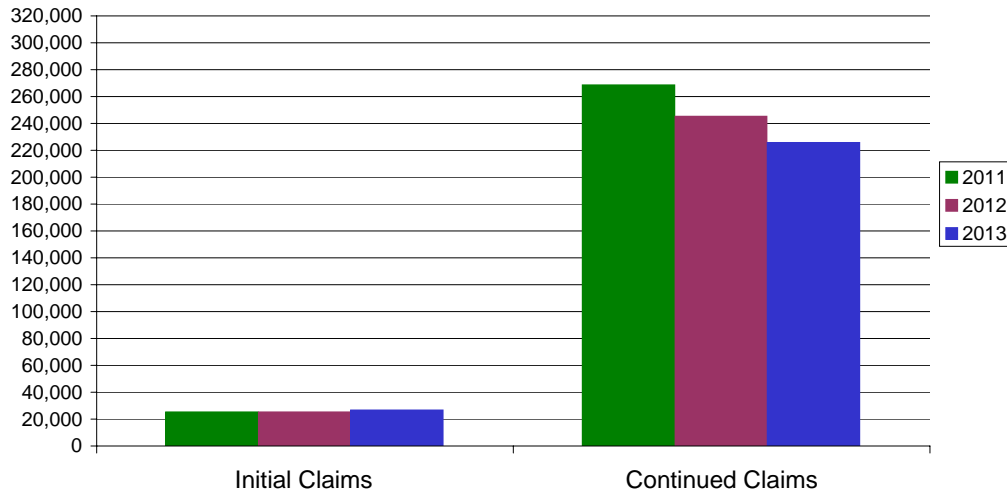
* Includes UI, EUC08, EB, Workshare & Interstate Liable.

Equal Opportunity Employer / Program / Auxiliary aids and services available upon request to individuals with disabilities / TTY via RI Relay 711.

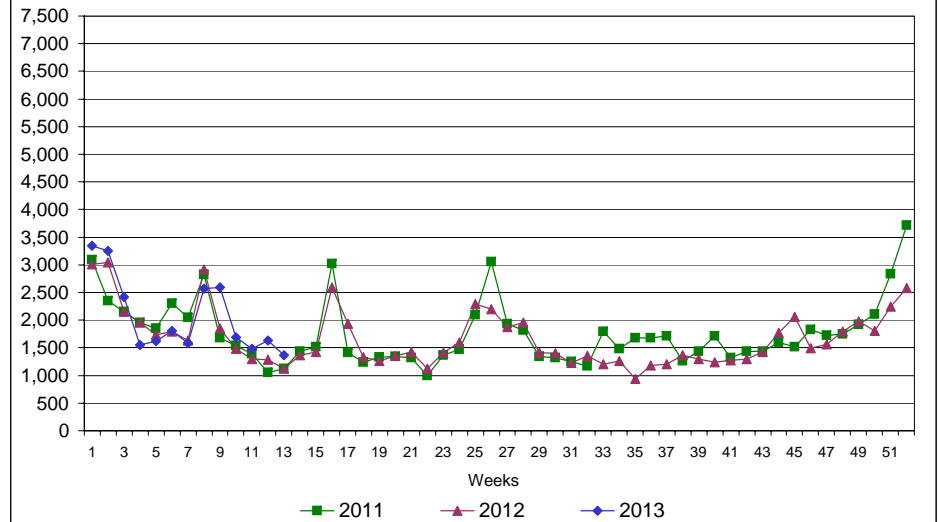
Rhode Island Department of Labor and Training

March 30, 2013

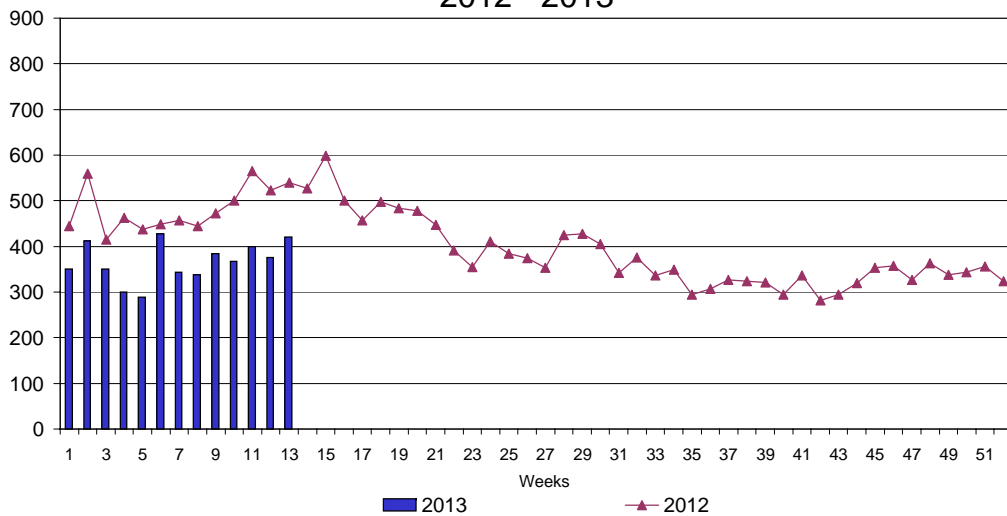
UI Claims Comparison Year to Date



UI Initial Claims 2011 - 2013



UI Exhaustions 2012 - 2013



TDI Claims Comparison Year to Date

