



Rhode Island Department of Labor and Training

Weekly Update of Claims Activity

Week Ending: March 23, 2013

Unemployment Insurance

Initial Claims – 1,631 initial claims were processed during the week ending 3/23/13, an increase of 150 from the previous week, and an increase of 349 from a year ago. The number of initial claims filed to date is up 5.7 percent from last year and up 5.4 percent from two years ago

Continued Claims – 17,057 continued claims were processed during the week of 3/23/13, a decrease of 506 from the previous week and a decrease of 725 from a year ago. The number of continued claims filed to date is down 8.3 percent from last year and down 16.0 percent from two years ago.

Workshare – gives employers an alternative to layoffs by allowing employees to work reduced hours and collect a percentage of regular UI benefits to compensate for lost pay. This week, 33 initial claims and 413 continued claims were processed. An estimated 10 layoffs were prevented this week, as a result of Workshare.

Emergency Unemployment Compensation 08 – EUC08, which became effective July 6, 2008, provides up to 53 weeks of federally funded benefits to eligible individuals who exhausted their UI claims. This week there were 413 new EUC08 claims processed and 7,726 continued claims processed (2,854 under tier I, 2,531 under tier II, 1,220 under tier III and 1,121 under tier IV).

Exhaustions – 376 individuals exhausted their regular payments this week, a decrease of 24 from a year ago. There were 117 individuals that exhausted EUC08.

Temporary Disability Insurance

Temporary Disability Insurance – 737 initial claims and 6,699 continued claims were processed for Temporary Disability Insurance. The average weekly TDI payment is \$443 per week. Rhode Island is currently paying an average of 11.1 weeks per new claim.

	Initial Claims			Continued Claims	TOTAL - Initial and Continued Claims			
	Total	New	Additional		Current Week	Previous Week	Year Ago	Two Years Ago
Total - All programs*	2,288	1,415	873	25,714	28,002	28,803	33,595	37,858
UI Claims	1,631	956	675	17,057	18,688	19,044	19,064	20,816
Change from:								
Previous Week	150	101	49	-506	-356			
Year Ago	349	137	212	-725	-376			
Two Years Ago	581	372	209	-2,709	-2,128			
EUC08 Claims	593	413	180	7,726	8,319	8,297	12,230	14,735
Interstate-Liable	31	20	11	518	549	601	612	662
Workshare	33	26	7	413	446	861	1,689	1,645
Workshare Equivalency	10	8	2	112	122	197	466	431
UI Exhaustions	-	-	-	376	376	400	523	558
EUC08 Exhaustions	-	-	-	117	117	138	203	283
TDI Claims	737	583	154	6,699	7,436	7,750	8,545	8,408
Change from:								
Previous Week	144	84	60	-458	-314			
Year Ago	112	68	44	-1,221	-1,109			

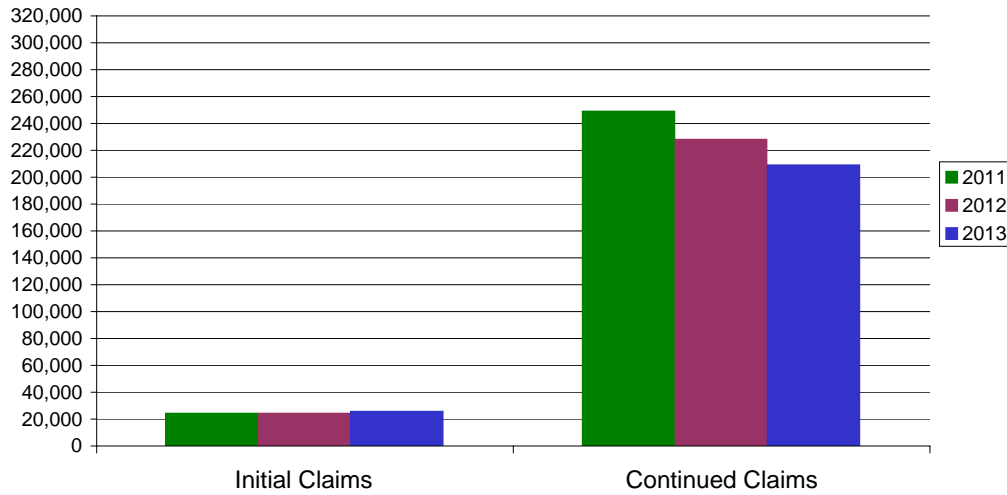
* Includes UI, EUC08, EB, Workshare & Interstate Liable.

Equal Opportunity Employer / Program / Auxiliary aids and services available upon request to individuals with disabilities / TTY via RI Relay 711.

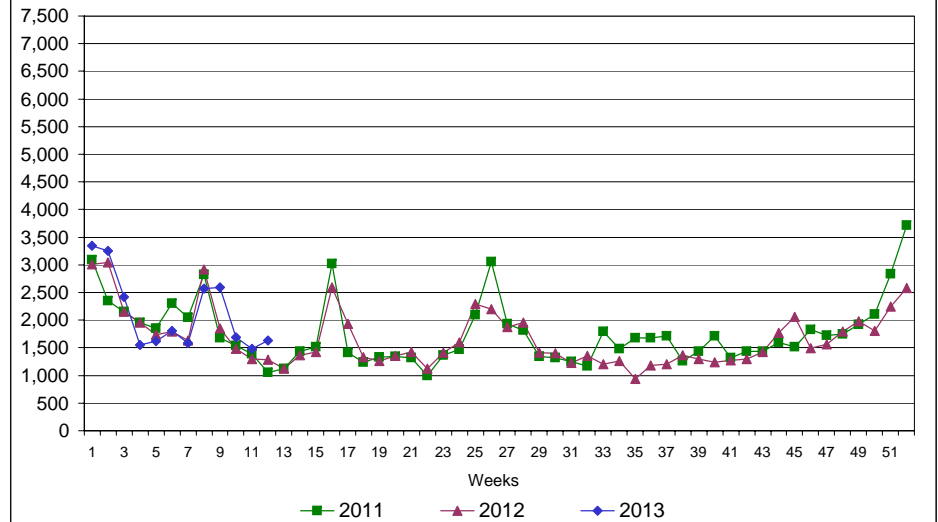
Rhode Island Department of Labor and Training

March 23, 2013

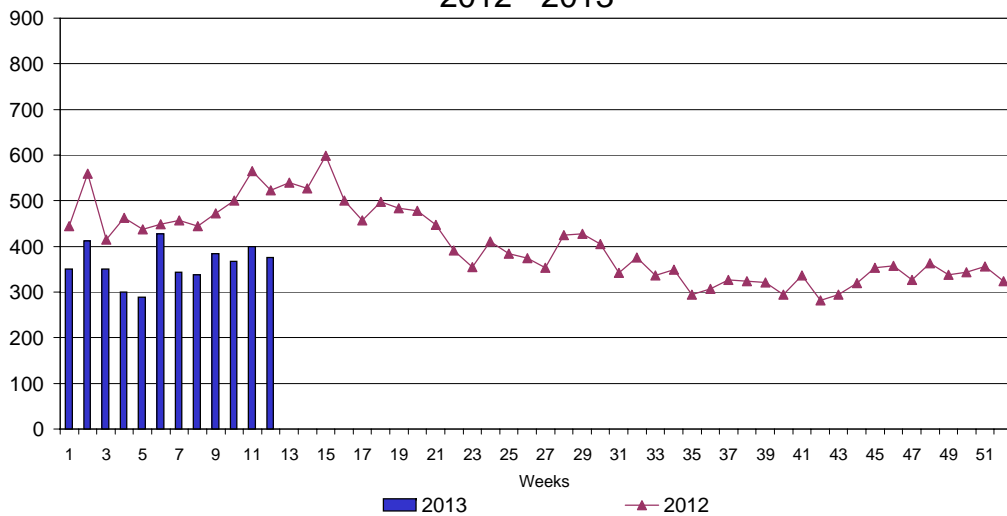
UI Claims Comparison Year to Date



UI Initial Claims 2011 - 2013



UI Exhaustions 2012 - 2013



TDI Claims Comparison Year to Date

