



Rhode Island Department of Labor and Training

Weekly Update of Claims Activity

Week Ending: March 9, 2013

Unemployment Insurance

Initial Claims – 1,687 initial claims were processed during the week ending 3/9/13, a decrease of 911 from the previous week, and an increase of 209 from a year ago. The number of initial claims filed to date is up 3.9 percent from last year and up 3.0 percent from two years ago.

Continued Claims – 17,936 continued claims were processed during the week of 3/9/13, a decrease of 1,663 from the previous week and a decrease of 974 from a year ago. The number of continued claims filed to date is down 8.9 percent from last year and down 16.5 percent from two years ago.

Workshare – gives employers an alternative to layoffs by allowing employees to work reduced hours and collect a percentage of regular UI benefits to compensate for lost pay. This week, 38 initial claims and 506 continued claims were processed. An estimated 11 layoffs were prevented this week, as a result of Workshare.

Emergency Unemployment Compensation 08 – EUC08, which became effective July 6, 2008, provides up to 53 weeks of federally funded benefits to eligible individuals who exhausted their UI claims. This week there were 289 new EUC08 claims processed and 7,696 continued claims processed (2,822 under tier I, 2,546 under tier II, 1,171 under tier III and 1,157 under tier IV).

Exhaustions – 367 individuals exhausted their regular payments this week, a decrease of 17 from a year ago. There were 120 individuals that exhausted EUC08.

Temporary Disability Insurance

Temporary Disability Insurance – 967 initial claims and 7,394 continued claims were processed for Temporary Disability Insurance. The average weekly TDI payment is \$449 per week. Rhode Island is currently paying an average of 11.0 weeks per new claim.

	Initial Claims			Continued Claims	TOTAL - Initial and Continued Claims			
	Total	New	Additional		Current Week	Previous Week	Year Ago	Two Years Ago
Total - All programs*	2,214	1,225	989	26,674	28,888	31,652	35,229	39,404
UI Claims	1,687	888	799	17,936	19,623	22,197	20,388	22,445
Change from:								
Previous Week	-911	-172	-739	-1,663	-2,574			
Year Ago	209	-40	249	-974	-765			
Two Years Ago	147	-64	211	-2,969	-2,822			
EUC08 Claims	460	289	171	7,696	8,156	8,387	12,456	14,686
Interstate-Liable	29	16	13	536	565	631	586	587
Workshare	38	32	6	506	544	437	1,799	1,686
Workshare Equivalency	11	10	1	133	144	118	465	438
UI Exhaustions	-	-	-	367	367	384	501	574
EUC08 Exhaustions	-	-	-	120	120	126	204	252
TDI Claims	967	788	179	7,394	8,361	8,097	8,969	8,782
Change from:								
Previous Week	404	327	77	-140	264			
Year Ago	121	96	25	-729	-608			

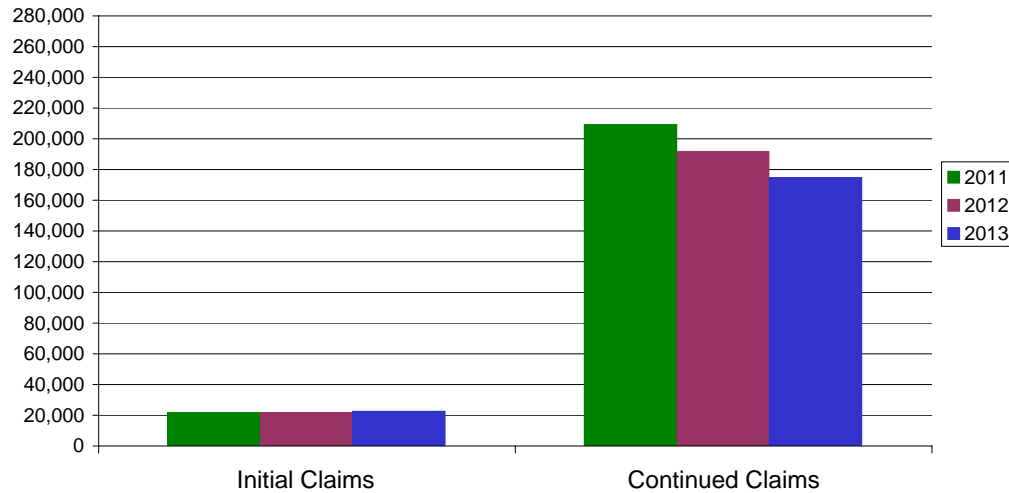
* Includes UI, EUC08, EB, Workshare & Interstate Liable.

Equal Opportunity Employer / Program / Auxiliary aids and services available upon request to individuals with disabilities / TTY via RI Relay 711.

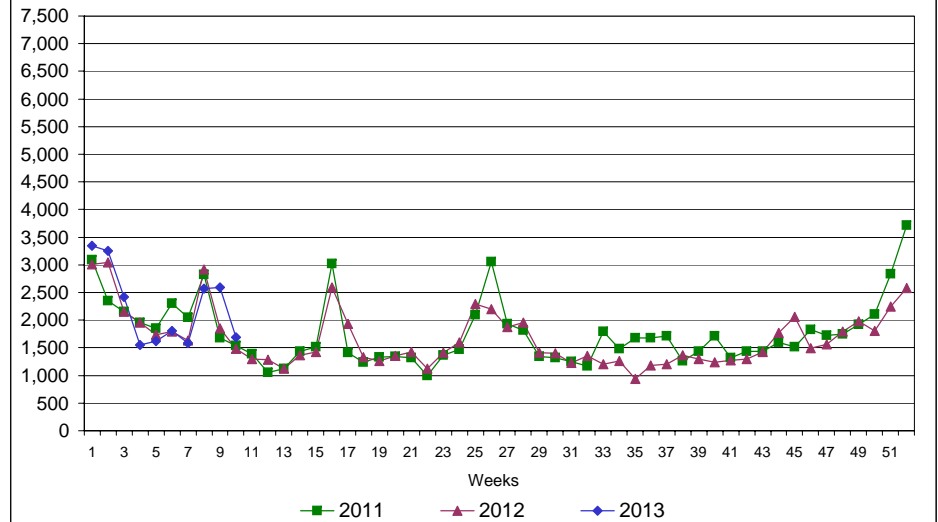
Rhode Island Department of Labor and Training

March 9, 2013

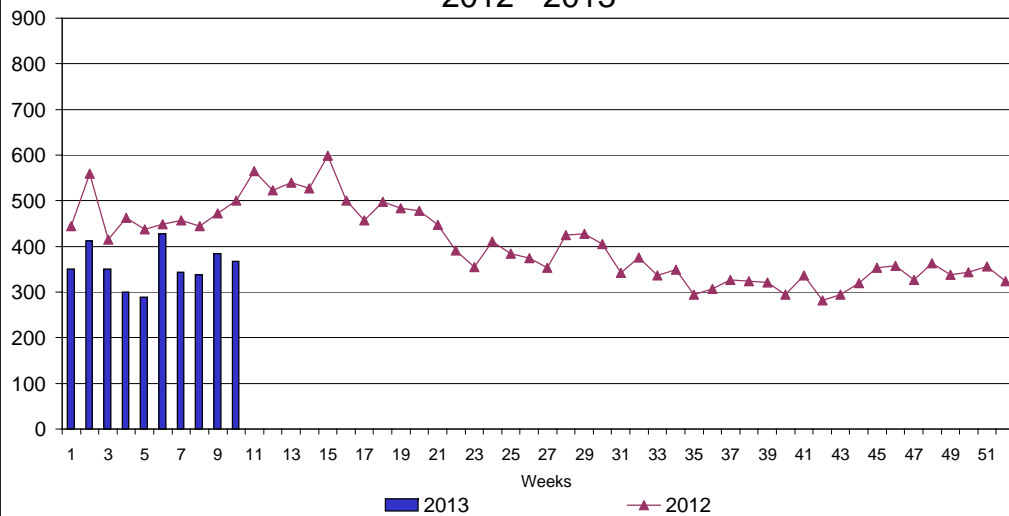
UI Claims Comparison Year to Date



UI Initial Claims 2011 - 2013



UI Exhaustions 2012 - 2013



TDI Claims Comparison Year to Date

