



## *Rhode Island Department of Labor and Training*

# *Weekly Update of Claims Activity*

*Week Ending: January 21, 2012*

### ***Unemployment Insurance***

**Initial Claims** – 2,150 initial claims were processed during the week ending 1/21/12, a decrease of 894 from the previous week, and an increase of 2 from a year ago.

**Continued Claims** – 18,341 continued claims were processed during the week of 1/21/12, an increase of 487 from the previous week and a decrease of 1,549 from a year ago.

**Workshare** – gives employers an alternative to layoffs by allowing employees to work reduced hours and collect a percentage of regular UI benefits to compensate for lost pay. This week, 50 initial claims and 526 continued claims were processed. An estimated 12 layoffs were prevented this week, as a result of Workshare.

**Emergency Unemployment Compensation 08** – EUC08, which became effective July 6, 2008, provides up to 53 weeks of federally funded benefits to eligible individuals who exhausted their UI claims. This week there were 326 new EUC08 claims processed and 11,782 continued claims processed (4,825 under tier I, 2,951 under tier II, 2,774 under tier III and 1,232 under tier IV).

**Extended Benefits** – are payable to individuals who have exhausted UI or EUC08 claims. This week, 142 new EB claims and 1,797 continued EB claims were processed.

**Exhaustions** – 415 individuals exhausted their regular payments this week, a decrease of 145 from the previous week and a decrease of 65 from a year ago. There were 237 individuals that exhausted EUC08 and 82 individuals that exhausted EB.

### ***Temporary Disability Insurance***

**Temporary Disability Insurance** – 717 initial claims and 5,873 continued claims were processed for Temporary Disability Insurance. The average weekly TDI payment is \$456 per week. Rhode Island is currently paying an average of 10.5 weeks per new claim.

	<b>Initial Claims</b>			<b>Continued Claims</b>	<b>TOTAL - Initial and Continued Claims</b>			
	<b>Total</b>	<b>New</b>	<b>Additional</b>		<b>Current Week</b>	<b>Previous Week</b>	<b>Year Ago</b>	<b>Two Years Ago</b>
<b>Total - All programs*</b>	2,906	1,996	910	32,982	35,888	37,444	41,786	48,592
<b>UI Claims</b>	2,150	1,473	677	18,341	20,491	20,898	22,038	23,188
Change from:								
Previous Week	-894	-638	-256	487	-407			
Year Ago	2	41	-39	-1,549	-1,547			
Two Years Ago	-281	-53	-228	-2,416	-2,697			
<b>EUC08 Claims</b>	517	326	191	11,782	12,299	12,970	13,649	19,819
<b>Extended Benefits</b>	150	142	8	1,797	1,947	1,944	3,638	1,371
<b>Interstate-Liable</b>	39	19	20	536	575	577	596	757
<b>Workshare</b>	50	36	14	526	576	1,055	1,865	3,457
<b>Workshare Equivalency</b>	12	8	4	152	164	381	481	893
<b>UI Exhaustions</b>	-	-	-	415	415	560	480	544
<b>EUC08 Exhaustions</b>	-	-	-	237	237	230	180	46
<b>EB Exhaustions</b>	-	-	-	82	82	92	97	145
<b>TDI Claims</b>	717	618	99	5,873	6,590	7,182	7,105	8,016
Change from:								
Previous Week	-280	-221	-59	-312	-592			
Year Ago	135	132	3	-650	-515			

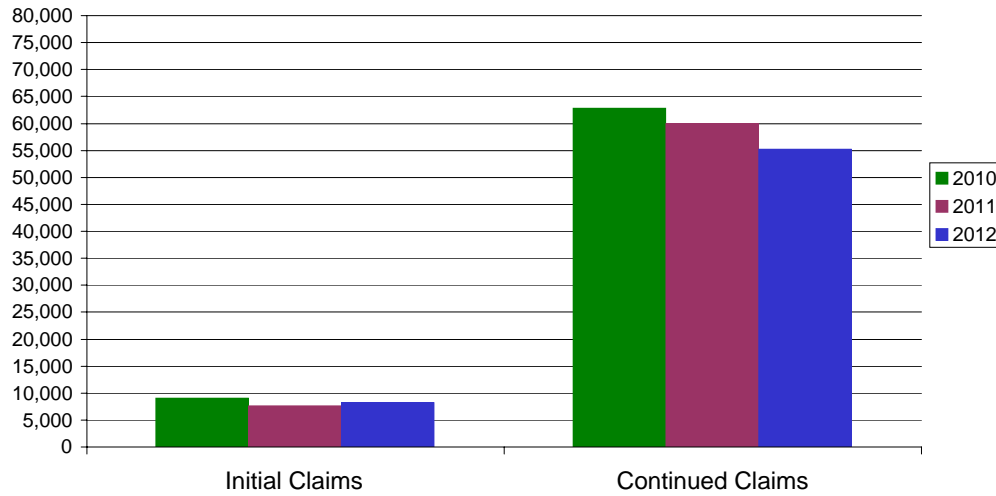
\* Includes UI, EUC08, EB, Workshare & Interstate Liable.

Equal Opportunity Employer / Program / Auxiliary aids and services available upon request to individuals with disabilities / TTY via RI Relay 711.

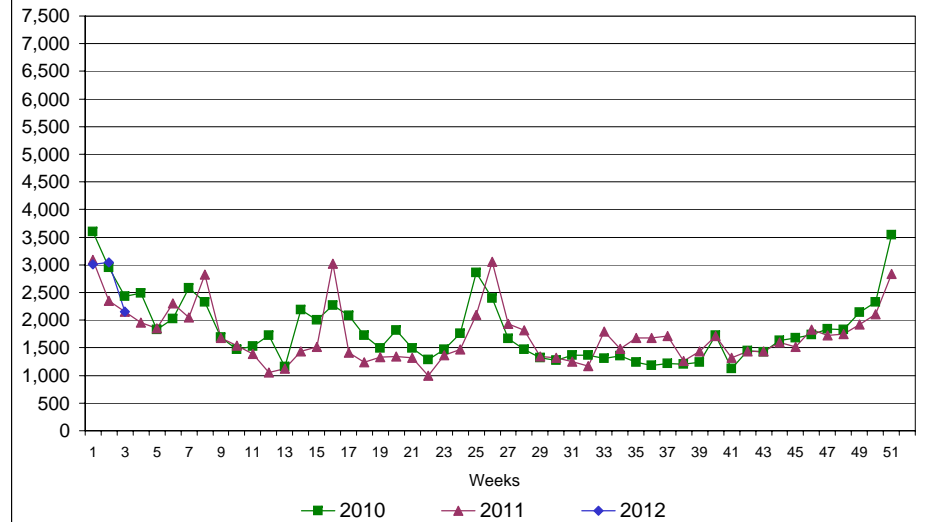
# Rhode Island Department of Labor and Training

## January 21, 2012

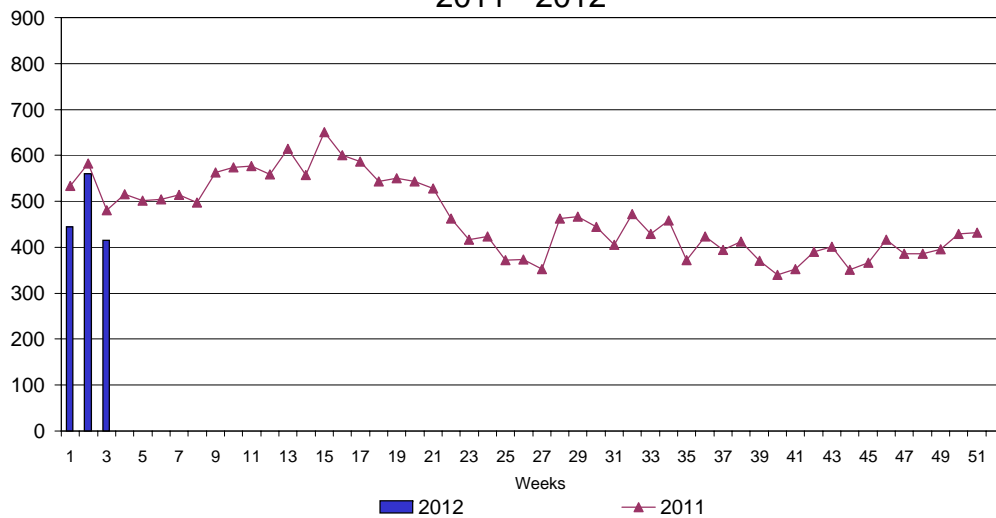
### UI Claims Comparison Year to Date



### UI Initial Claims 2010 - 2012



### UI Exhaustions 2011 - 2012



### TDI Claims Comparison Year to Date

