



Rhode Island Department of Labor and Training

Weekly Update of Claims Activity

Week Ending: January 14, 2012

Unemployment Insurance

Initial Claims – 3,044 initial claims were processed during the week ending 1/14/12, an increase of 40 from the previous week, and an increase of 690 from a year ago.

Continued Claims – 17,854 continued claims were processed during the week of 1/14/12, a decrease of 1,151 from the previous week and a decrease of 1,714 from a year ago.

Workshare – gives employers an alternative to layoffs by allowing employees to work reduced hours and collect a percentage of regular UI benefits to compensate for lost pay. This week, 54 initial claims and 1,001 continued claims were processed. An estimated 14 layoffs were prevented this week, as a result of Workshare.

Emergency Unemployment Compensation 08 – EUC08, which became effective July 6, 2008, provides up to 53 weeks of federally funded benefits to eligible individuals who exhausted their UI claims. This week there were 422 new EUC08 claims processed and 12,321 continued claims processed (5,059 under tier I, 3,103 under tier II, 2,862 under tier III and 1,297 under tier IV).

Extended Benefits – are payable to individuals who have exhausted UI or EUC08 claims. This week, 126 new EB claims and 1,809 continued EB claims were processed.

Exhaustions – 560 individuals exhausted their regular payments this week, an increase of 115 from the previous week and a decrease of 22 from a year ago. There were 230 individuals that exhausted EUC08 and 92 individuals that exhausted EB.

Temporary Disability Insurance

Temporary Disability Insurance – 997 initial claims and 6,185 continued claims were processed for Temporary Disability Insurance. The average weekly TDI payment is \$437 per week. Rhode Island is currently paying an average of 10.6 weeks per new claim.

| | Initial Claims | | | Continued Claims | TOTAL - Initial and Continued Claims | | | |
|------------------------------|----------------|-------|------------|------------------|--------------------------------------|---------------|----------|---------------|
| | Total | New | Additional | | Current Week | Previous Week | Year Ago | Two Years Ago |
| Total - All programs* | 3,910 | 2,702 | 1,208 | 33,534 | 37,444 | 38,279 | 40,533 | 49,384 |
| UI Claims | 3,044 | 2,111 | 933 | 17,854 | 20,898 | 22,009 | 21,922 | 24,997 |
| Change from: | | | | | | | | |
| Previous Week | 40 | 309 | -269 | -1,151 | -1,111 | | | |
| Year Ago | 690 | 546 | 144 | -1,714 | -1,024 | | | |
| Two Years Ago | 88 | 270 | -182 | -4,187 | -4,099 | | | |
| EUC08 Claims | 649 | 422 | 227 | 12,321 | 12,970 | 12,975 | 13,577 | 19,788 |
| Extended Benefits | 135 | 126 | 9 | 1,809 | 1,944 | 1,970 | 3,678 | 1,560 |
| Interstate-Liable | 28 | 18 | 10 | 549 | 577 | 638 | 661 | 765 |
| Workshare | 54 | 25 | 29 | 1,001 | 1,055 | 687 | 695 | 2,274 |
| Workshare Equivalency | 14 | 5 | 9 | 367 | 381 | 302 | 293 | 854 |
| UI Exhaustions | - | - | - | 560 | 560 | 445 | 582 | 622 |
| EUC08 Exhaustions | - | - | - | 230 | 230 | 238 | 303 | 4 |
| EB Exhaustions | - | - | - | 92 | 92 | 111 | 83 | 173 |
| TDI Claims | 997 | 839 | 158 | 6,185 | 7,182 | 6,888 | 6,918 | 9,063 |
| Change from: | | | | | | | | |
| Previous Week | 288 | 255 | 33 | 6 | 294 | | | |
| Year Ago | 376 | 323 | 53 | -112 | 264 | | | |

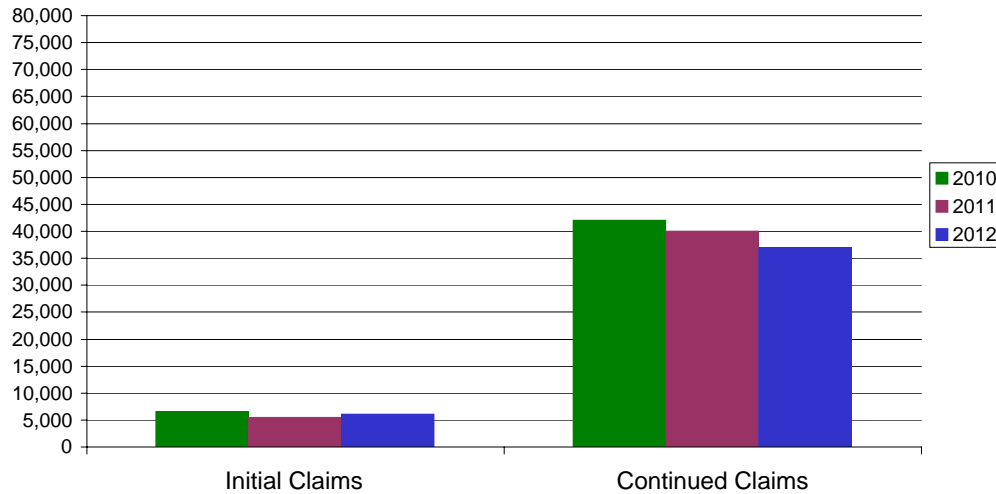
* Includes UI, EUC08, EB, Workshare & Interstate Liable.

Equal Opportunity Employer / Program / Auxiliary aids and services available upon request to individuals with disabilities / TTY via RI Relay 711.

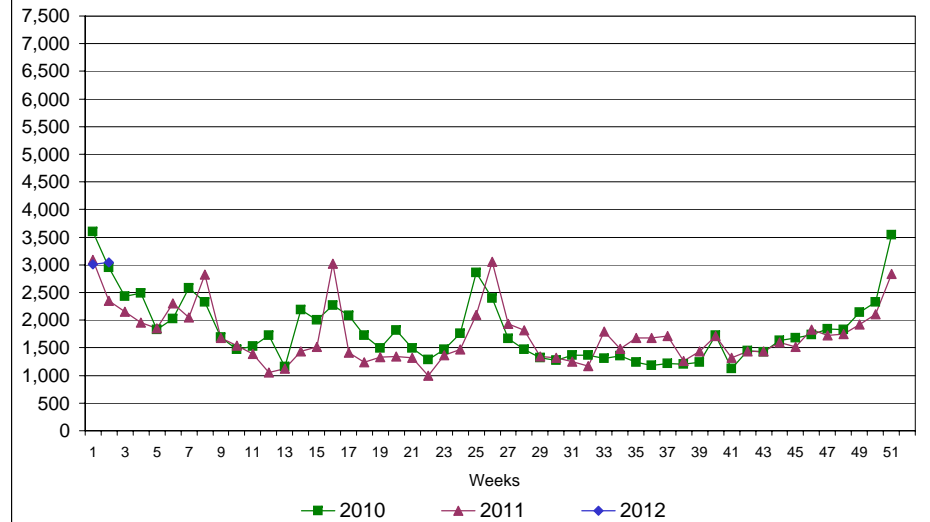
Rhode Island Department of Labor and Training

January 14, 2012

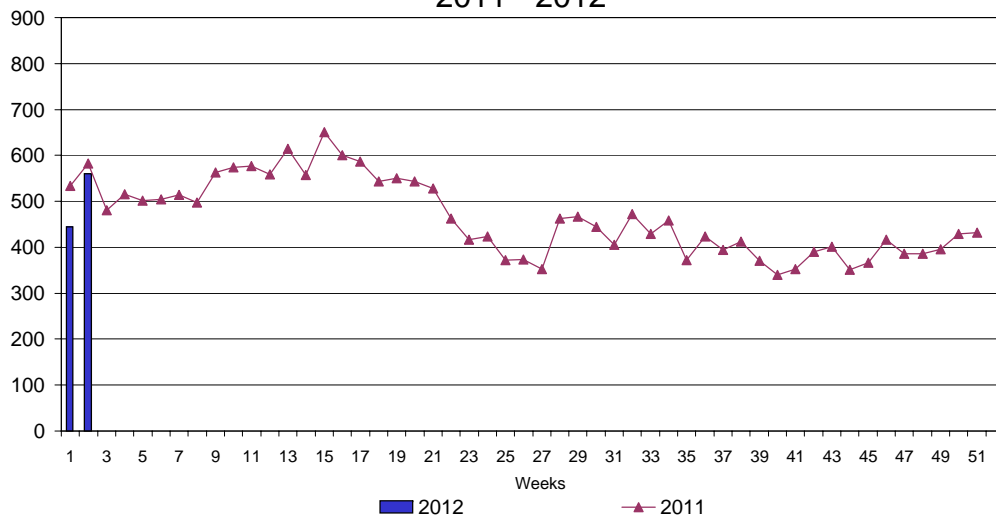
UI Claims Comparison Year to Date



UI Initial Claims 2010 - 2012



UI Exhaustions 2011 - 2012



TDI Claims Comparison Year to Date

