



Rhode Island Department of Labor and Training

Weekly Update of Claims Activity

Week Ending: January 7, 2012

Unemployment Insurance

Initial Claims – 3,004 initial claims were processed during the week ending 1/7/12, a decrease of 716 from the previous week, and a decrease of 81 from a year ago.

Continued Claims – 19,005 continued claims were processed during the week of 1/7/12, an increase of 3,373 from the previous week and a decrease of 1,427 from a year ago.

Workshare – gives employers an alternative to layoffs by allowing employees to work reduced hours and collect a percentage of regular UI benefits to compensate for lost pay. This week, 10 initial claims and 677 continued claims were processed. An estimated 2 layoffs were prevented this week, as a result of Workshare.

Emergency Unemployment Compensation 08 – EUC08, which became effective July 6, 2008, provides up to 53 weeks of federally funded benefits to eligible individuals who exhausted their UI claims. This week there were 357 new EUC08 claims processed and 12,359 continued claims processed (5,009 under tier I, 3,095 under tier II, 2,898 under tier III and 1,357 under tier IV).

Extended Benefits – are payable to individuals who have exhausted UI or EUC08 claims. This week, 121 new EB claims and 1,839 continued EB claims were processed.

Exhaustions – 445 individuals exhausted their regular payments this week, an increase of 54 from the previous week and a decrease of 89 from a year ago. There were 238 individuals that exhausted EUC08 and 111 individuals that exhausted EB.

Temporary Disability Insurance

Temporary Disability Insurance – 709 initial claims and 6,179 continued claims were processed for Temporary Disability Insurance. The average weekly TDI payment is \$452 per week. Rhode Island is currently paying an average of 10.7 weeks per new claim.

	Initial Claims			Continued Claims	TOTAL - Initial and Continued Claims			
	Total	New	Additional		Current Week	Previous Week	Year Ago	Two Years Ago
Total - All programs*	3,816	2,311	1,505	34,463	38,279	35,929	43,642	49,139
UI Claims	3,004	1,802	1,202	19,005	22,009	19,352	23,517	23,563
Change from:								
Previous Week	-716	188	-904	3,373	2,657			
Year Ago	-81	-297	216	-1,427	-1,508			
Two Years Ago	-596	-394	-202	-958	-1,554			
EUC08 Claims	616	357	259	12,359	12,975	12,747	14,029	20,143
Extended Benefits	131	121	10	1,839	1,970	1,954	3,802	1,730
Interstate-Liable	55	29	26	583	638	605	657	698
Workshare	10	2	8	677	687	1,271	1,637	3,005
Workshare Equivalency	2	0	2	300	302	322	449	774
UI Exhaustions	-	-	-	445	445	391	534	502
EUC08 Exhaustions	-	-	-	238	238	233	333	1
EB Exhaustions	-	-	-	111	111	90	69	159
TDI Claims	709	584	125	6,179	6,888	6,307	7,285	7,455
Change from:								
Previous Week	307	246	61	274	581			
Year Ago	-46	-52	6	-351	-397			

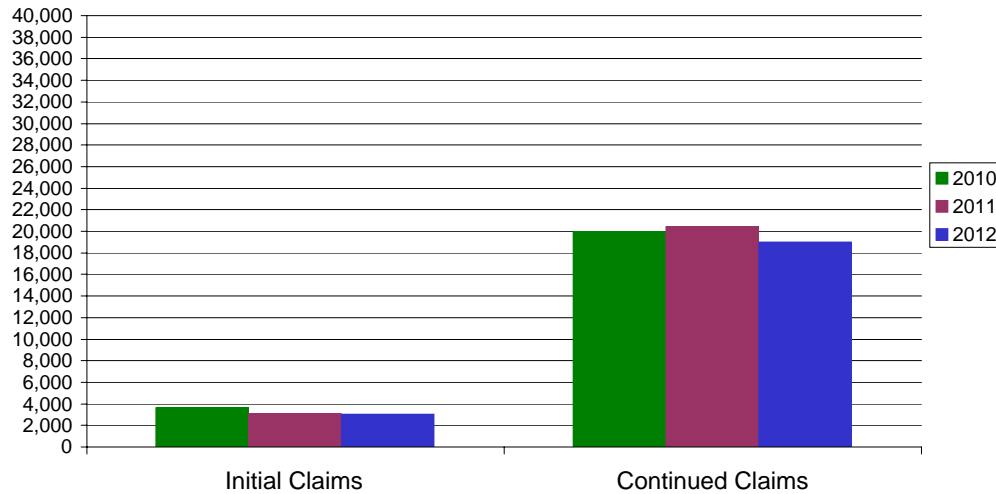
* Includes UI, EUC08, EB, Workshare & Interstate Liable.

Equal Opportunity Employer / Program / Auxiliary aids and services available upon request to individuals with disabilities / TTY via RI Relay 711.

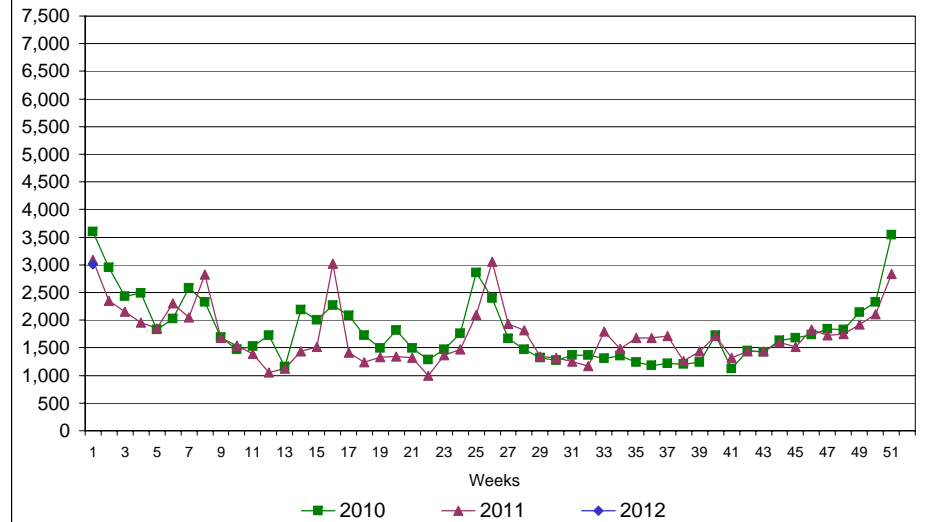
Rhode Island Department of Labor and Training

January 7, 2012

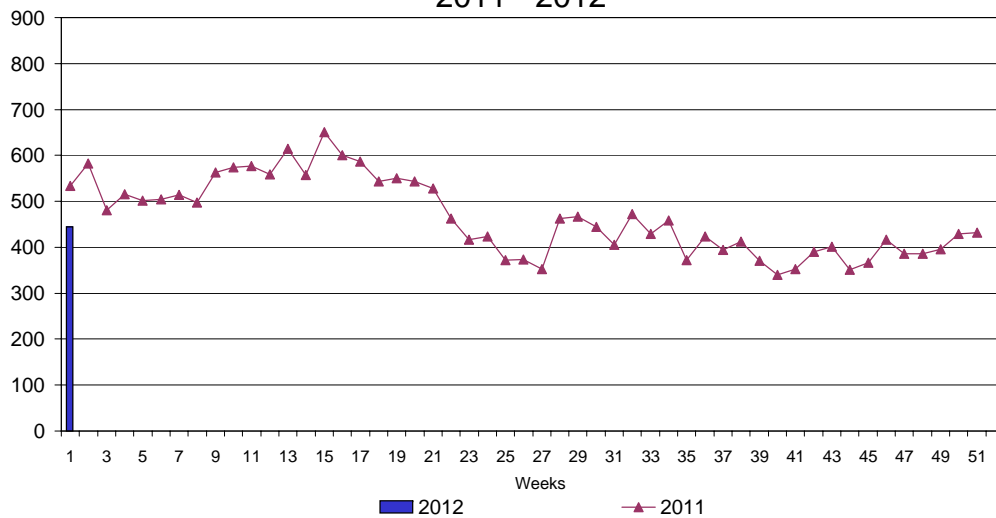
UI Claims Comparison Year to Date



UI Initial Claims 2010 - 2012



UI Exhaustions 2011 - 2012



TDI Claims Comparison Year to Date

